

RBR  
U410.P427  
W52 n  
16th, 1962



**XVI**

**NATIONAL**

**DEBATE**

**TOURNAMENT**



**WEST POINT, NEW YORK**

**25 - 28 APRIL 1962**





The Larmon Trophy is presented by Elvís Stahr, Secretary of the Army, to the winning team of Lawrence Tribe and Gene Clements of Harvard.

Sixteenth  
National

Debate Tournament  
at West Point

APRIL 25-28, 1962

Programs

*RESOLVED:* That Labor Organizations  
Should Be Under The  
Jurisdiction of Anti-Trust  
Legislation.

UNITED STATES MILITARY ACADEMY  
WEST POINT, NEW YORK

## FOREWORD

It is a pleasure for me to welcome you to the Sixteenth National Debate Tournament at West Point.

I wish to extend a special welcome to those leaders of the debate community whose pre-tournament labors have enabled us to bring together the outstanding teams which represent their regions here. To them, and to those of you who will judge the debates for the next three days, go our gratitude.

The debate topic this year is one which should give the participants a deeper awareness of the American political system and of the values which that system seeks to preserve. Perhaps equally as valuable as the debating itself, however, is the opportunity the tournament affords for the exchange of ideas and information among the students and faculties of the thirty-eight colleges and universities represented. Such an exchange should prove to be a rewarding experience for all.

Your immediate hosts are the members of the Cadet Debate Council and Forum. They are anxious to make your visit here a happy one, so feel free to call on them at any time.

The Corps of Cadets joins me in the hope that your stay at West Point will be both educationally profitable and personally enjoyable.



W. C. WESTMORELAND  
Major General, USA  
Superintendent



Awards to be presented at the  
Sixteenth National Debate Tournament

## TABLE OF CONTENTS

### I. GENERAL INFORMATION

Special Announcements . . . . .	5
Schedule of 16th National Debate Tournament . . . . .	8
Entertainment . . . . .	10
Housing . . . . .	11
Transportation . . . . .	11
Dining . . . . .	12
Judging Instructions . . . . .	13

### II. HISTORY OF THE NATIONAL DEBATE TOURNAMENT

Brief History . . . . .	17
Previous Winners and Runners-up . . . . .	18
Honor Roll of District Nominating Committee . . . . .	19
History of School Participation . . . . .	21
Final Results of 15th National Debate Tournament . . . . .	27

### III. SIXTEENTH NATIONAL DEBATE TOURNAMENT

Chairmen and Committees for 1962 . . . . .	32
Map of National Debate Tournament Districts . . . . .	34
Guest Judges . . . . .	35
1962 Participating Schools, Debaters and Coaches . . . . .	38
Elimination Ladder . . . . .	38
Visitor's Guide Map . . . . . (Back cover)	40

SCHEDULE  
SIXTEENTH NATIONAL DEBATE TOURNAMENT

All pairings will be announced in Lee Hall. Debate teams, coaches and judges should arrive at Lee Hall no later than the times indicated.

Wednesday, 25 April  
PM 1:00 - 6:00 Registration, Housing, and Sightseeing

6:15 Supper

8:00 Orientation by Cadet Chairman in Lee Hall

9:00 Coaches' and Judges' Reception at the Officers' Club  
Debaters' Reception in Lee Hall

Thursday, 26 April  
AM 6:45 Breakfast

7:45 Seeding Round One

10:25 Seeding Round Two

PM 12:10 Dinner

12:55 Seeding Round Three

2:30 Tours of West Point

3:45 Seeding Round Four

6:15 Supper

8:00 Coaches' and Judges' Business Meeting at West Point Army Mess

Friday, 27 April  
AM 6:45 Breakfast

7:45 Seeding Round Five

10:25 Seeding Round Six

PM 12:10 Dinner

12:55 Seeding Round Seven

3:45 Seeding Round Eight

7:00 Banquet at Cullum Hall; Announcement of Finalists;  
Individual Speakers' Awards



Saturday, 28 April  
AM 6:45

Breakfast

8:05 Elimination Round

10:30 Quarter Final Round

10:30 Tour of Statistics Room

PM 12:10 Dinner

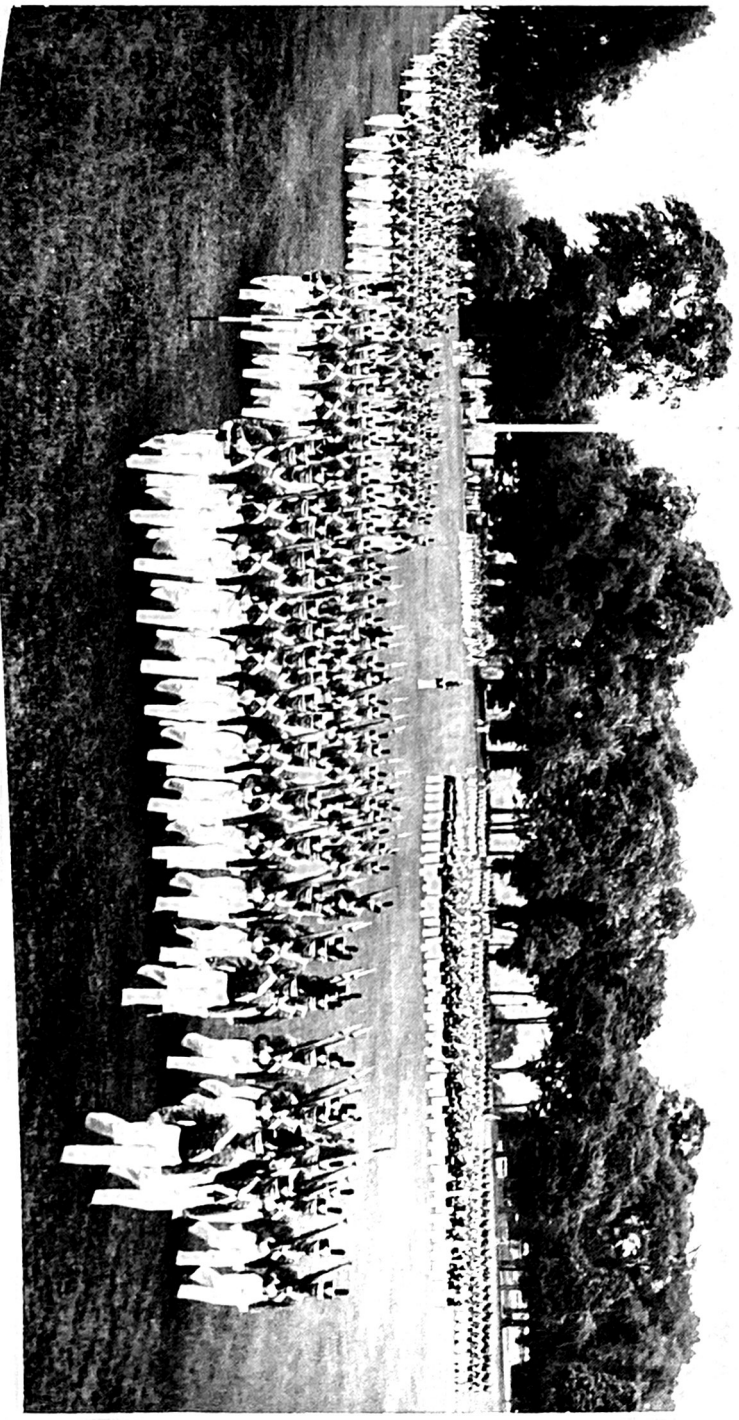
1:00 Semi-Final Round

1:10 Parade by Corps of Cadets on the Plain

3:30 Final Debate in North Auditorium, Thayer Hall

6:15 Supper

9:00 Formal Dance at Cullum Hall



## ENTERTAINMENT

### ORIENTATION AND GET-TOGETHER.

At 8:00 p. m., Wednesday, 25 April, the cadet staff will give an Orientation in the Tournament Headquarters, Lee Hall. Following this short presentation, all judges, coaches, and senior observers are invited to attend an informal reception in the Point Officer's Club. All other participants are invited to remain at Lee Hall for an informal get-together. Refreshments will be available.

### ACADEMY TOURS.

There will be guided bus tours of West Point at 2:30 p. m. on Thursday, 26 April. The tour will begin in front of Lee Hall, and will last approximately 45 minutes. Everyone will be back at Lee Hall in time to attend Debate Round 4 at 3:45 p. m.

### CLASSROOM TOURS.

There will be guided tours of academic classrooms and laboratories. All duty-free judges and coaches may take advantage of these tours by contacting the Information Desk in Lee Hall during any of the eight seeding rounds. All free debaters may take advantage of these tours on Saturday morning, 28 April, by using the same procedure.

### BANQUET.

On Friday at 7:00 p. m., the Debate Tournament Banquet will be held at Cullum Hall. Awards to top individual speakers will be presented and the names of the 16 finalist teams will be announced. Entertainment will be provided by the Post Orchestra.

### STATISTICS ROOM TOUR.

A tour of the Statistics Room has been arranged for all participants, judges, and coaches anytime after 10:30 a. m., Saturday. The Statistics Room is located in Room 133, Thayer Hall. Guides will leave from the Information Desk in Lee Hall.

### SATURDAY AFTERNOON ACTIVITIES.

At 1:10 p. m., Saturday, there will be a parade by the U. S. Corps of Cadets. All interested may attend. The location will be announced in Lee Hall Saturday morning. Following the parade, there will be several athletic events which are open to all. A schedule of these events may be obtained at the Information Desk in Lee Hall.

## HOUSING

1. All participants will reside at the U. S. Hotel Thayer, located on post at West Point, during the Tournament.
2. The Debate Council will pay housing expenses for all guest judges. Coaches, female and male debaters will be charged \$2. 00 per night for their rooms. The Debate Council is not authorized to incur any expenses for the wives, families, or guests of participants.
3. Because of the limited space available, all participants must check out on Saturday, 28 April, before leaving the hotel to attend the debates for that day. Reservations for participants who desire to stay at the Hotel Thayer over the weekend must be made on an individual basis as early as possible after arriving at West Point. Everyone will check out on an individual basis, even though his bill is being paid entirely or in part by the Debate Council.
4. The Hotel will be happy to check all bags and belongings for participants who check out and attend the final debates on Saturday. It is urged that everyone concerned check their bags at the Hotel inasmuch as storage facilities are limited at the central part of the post.
5. The Debate Council will be happy to call anyone at a certain hour if desired. Please notify the cadets situated at a desk in the Hotel lobby upon arrival if you desire to rise at a specific time.

## PARKING

During daylight hours facilities in the central part of the post, particularly near Tournament Headquarters, are extremely limited. Those participants staying at the Hotel Thayer are requested to park their cars at the hotel and utilize tournament transportation. Your cooperation will be greatly appreciated.

## TRANSPORTATION

Shuttle transportation has been arranged for you during your stay at West Point. Bus transportation has been scheduled for those times when participants will be going to meals, debates, and other functions occurring during the course of the tournament. Sedan service will be provided at other times between 6:00 a. m. and 12:00 midnight on call from Lee Hall. Commercial taxi service for both on and off-post use is available. Shuttle buses will operate continually between hours indicated.

### TIME

6:00 PM

### VEHICLE

Wednesday, 25 April

Bus from Hotel Thayer to Lee Hall

Thursday, 26 April

Sedan from Hotel to Catholic Chapel

Shuttle Bus between Hotel, Lee Hall & Officer's Club

Tour Bus of the Post

Shuttle Bus between Lee Hall and Hotel

6:00 AM

6:40 AM - 7:00 AM

2:30 PM - 3:30 PM

5:30 PM - 6:15 PM

TIME

VEHICLE

Friday, 27 April

6:00 AM	Sedan from Hotel to Catholic Chapel
6:40 AM - 7:00 AM	Shuttle Bus between Hotel, Lee Hall & Officer's Club
5:00 PM - 7:00 PM	Shuttle Bus between Lee Hall & Hotel & Cullum Hall
9:00 PM - 11:00 PM	Shuttle Bus between Cullum Hall and Hotel

Saturday, 28 April

6:00 AM	Sedan from Hotel to Catholic Chapel
6:40 AM - 7:00 AM	Shuttle Bus between Hotel, Lee Hall & Officer's Club
11:40 AM - 12:15 PM	Shuttle Bus between Lee Hall and Hotel

DINING

1. All male debaters will eat in the Cadet Dining Hall at the times prescribed below. They will be seated in groups of eight with two Cadet Escorts at tables provided in a section of the Cadet Dining Hall reserved for Debate Tournament participants. Prior to the meals, debaters will assemble in Lee Hall where they will meet their escorts.

2. The hours for meals in the Cadet Dining Hall (Washington Hall) are as follows:  
Breakfast - 6:45 AM; Dinner - 12:10 PM; Supper - 6:15 PM.

3. Provisions have been made for the feeding of all senior advisers, judges, coaches, and women debaters at the West Point Army Mess (Officer's Club) and in the Main Dining Room of the Hotel Thayer. Breakfast only will be served at the Hotel Thayer. Dinner and Supper will be served at the West Point Army Mess. To facilitate the keeping of records by the Officer's Club, the Hotel Thayer, and the West Point Debate Council, diners will sign both their name and the name of their school to their checks at the beginning of each meal. Observers, guests, children, and all other non-participants in the Tournament are authorized to dine at the Officer's Club and will pay in cash at each meal. Male debaters choosing to eat breakfast at the Hotel Thayer rather than in the Cadet Dining Hall will also be required to pay in cash during that meal. Cadet escorts will accompany participants to the Officer's Club daily for all meals excluding breakfast.

4. The hours for meals in the Officer's Club and Hotel Thayer Dining Room are as follows:

Breakfast	6:45 AM to 7:30 AM (Hotel Thayer)
Dinner	11:30 AM to 1:00 PM
Supper	6:00 PM to 7:30 PM

5. Visitors are urged to arrange their schedules in order to meet their Tournament commitments.

6. All senior advisers, coaches and judges have been extended a temporary membership in the West Point Officer's Club. All expenses other than scheduled meals must be paid by the individual in cash at the Officer's Club. All senior members are invited to take advantage of the facilities provided by the Club.

7. All participants are asked to wear their identification cards at all times.

## DEBATE PROCEDURES & JUDGING INSTRUCTIONS

1. At the start of each round, which will begin in Lee Hall with announcement over the public address system, please report to the indicated lettered station. These stations will be found placed on the walls of Lee Hall. The chairman-timekeeper of the debate will meet the teams and judges at the lettered station and will conduct them to the room where the debate will take place. He will also present the judges a judging form and an envelope. To facilitate the administration of this tournament, everyone should be present in Lee Hall a half hour before the time of the debate round, and should report promptly to his lettered station when instructed to do so by the public address system.
2. At the conclusion of the debate, judges will make their decision on the judging form, filling out all sections. Place the form in the envelope, and hand it to the cadet escort, who, after checking it for completeness, will seal it and take it immediately to the Statistics Room (133 of Thayer Hall).
3. Judges will not announce their decision to the contestants during the seeding rounds. The final team ratings will be announced at the banquet following the completion of the eighth round. We also ask that the judges do not give a critique during the seeding rounds.
4. The above procedure will apply for each round of the tournament. We ask your cooperation in being on time for the start of the rounds in Lee Hall.
5. On Saturday morning all Tournament personnel will report to Lee Hall prior to the time for the semi-final round. As soon as judges have been obtained, all eliminated teams may leave.

### TEAM MATCHING AND JUDGE SELECTION

Because of the close time schedule required to complete all debates, it is requested that all participants, judges, and faculty members refrain from visiting the statistics and matching room. In the interest of expediency and fairness, statisticians will not be allowed to give information to anyone. Persons desiring to visit the statistics room are invited to do so after 10:30 AM on Saturday, 28 April.

In general, these rules will govern team matchings in the eight seeding rounds:

1. No team debates the same team twice.
2. No team debates a team from its own district.
3. Teams debate opposite sides of the question an equal number of times.
4. Teams debate alternate sides from round to round.
5. Teams are matched according to win-loss record.

Criteria for assigning judges are as follows:

1. No coach will judge a team from his own district.
2. No judge will judge the same team twice, unless absolutely necessary, and then on the opposite side.
3. When it is necessary to assign one judge instead of three:
  - a. Teams with the best record are given three judges.
  - b. A team may be required to have a single judge only twice.

## INSTRUCTIONS TO JUDGES - INDIVIDUAL DEBATER RATINGS

1. Use the following point scale:  
Superior . . . . . 50-41  
Excellent . . . . . 40-31  
Good . . . . . 30-21

No rating should be given below 21, it being assumed that any debater who is representing a district is at least above the average.

2. Rate each individual debater using the following criteria:

How good a job of debating did this speaker do in this debate ?

Consider:

- |                          |                             |
|--------------------------|-----------------------------|
| a. Teamwork and Courtesy | f. Adaptation (flexibility) |
| b. Analysis              | g. Refutation               |
| c. Organization          | h. Delivery                 |
| d. Logic                 | i. Clarity                  |
| e. Evidence              | j. Knowledge of question    |

The debater who most effectively fills the above criteria should receive the highest score for this debate, but not necessarily 50 points.

3. Please do not make any critiques or discuss your decision with anyone until after the end of the eighth seeding round.

## INSTRUCTIONS TO JUDGES - TEAM RATINGS

1. Use the following point scale:  
Superior . . . . . 50-41  
Excellent . . . . . 40-31  
Good . . . . . 30-21

No rating should be given below 21, it being assumed that any team representing a district is at least above the average.

2. Rate Each Team using the following criteria:

Which TEAM did the better job of debating, AS A TEAM?

Consider:

- |                          |                             |
|--------------------------|-----------------------------|
| a. Teamwork and Courtesy | f. Adaptation (flexibility) |
| b. Analysis              | g. Refutation               |
| c. Organization          | h. Delivery                 |
| d. Logic                 | i. Clarity                  |
| e. Evidence              | j. Knowledge of question    |

The team which most effectively fills the above criteria should receive the highest score and win the debate. This score is not necessarily 50 points.

3. The team with the highest total of individual debater's points does not necessarily have to win the debate. Consider only the effectiveness of the team as a whole in making your decision.

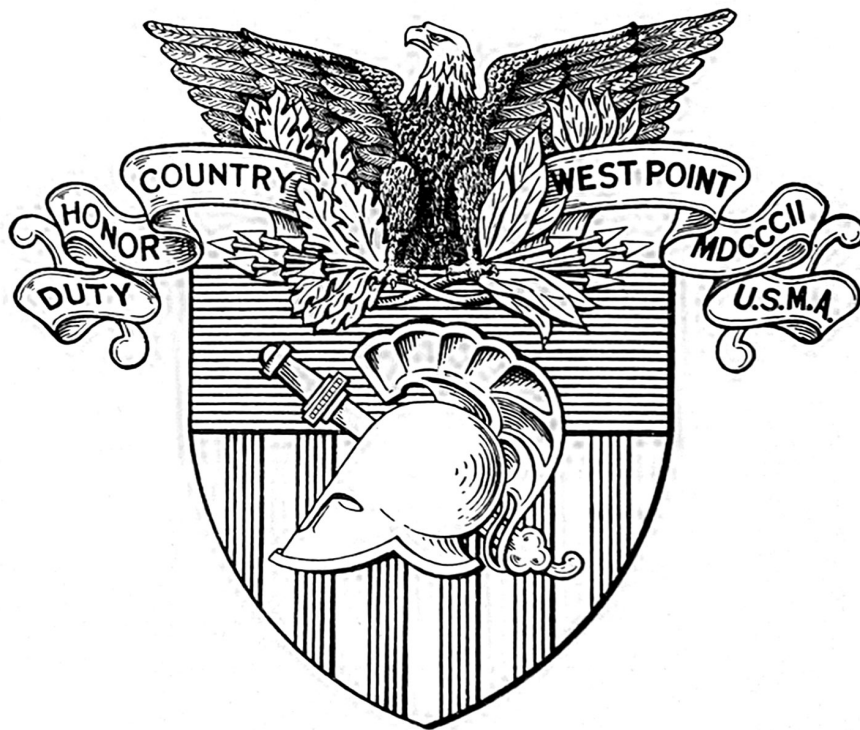
4. You are invited and encouraged to make any comments on the special forms at the rear of the ballot. There is a separate form for both the Affirmative and the Negative teams.

5. Please do not make any critiques or discuss your decision with anyone until after the end of the eighth seeding round.

**MATCHING BOARD**

Seeding Round 1	Seeding Round 2	Seeding Round 3	Seeding Round 4	Seeding Round 5	Seeding Round 6	Seeding Round 7	Seeding Round 8
KINGS	OREGON	SAN DIEGO STATE	U.S. MIL. ACAD.	FORT HAYS	BROOKLYN	VIENOMT	DUKE
FORDHAM	BUTLER	ABILENE CHRISTIAN	WILLIAM JEWELL	OHIO STATE	HOUSTON	OSGON	CENTRAL STATE
AMERICAN	DUKE	BAYLOR	AMERICAN	OHIO STATE	SAN DIEGO STATE	WYOMING STATE	WYOMING STATE
BROOKLYN	AMERICAN	U.S. MIL. ACAD.	EASTERN NAZARENNE	U.S. MIL. ACAD.	WILLIAMETTE	WYOMING STATE	WYOMING STATE
EASTERN NAZARENNE	WILLIAMETTE	U.S. MIL. ACAD.	EASTERN NAZARENNE	U.S. MIL. ACAD.	WILLIAMETTE	WYOMING STATE	WYOMING STATE
GEORGETOWN	SOUTH CAROLINA	AMERICAN	OHIO STATE	WILLIAMETTE	WYOMING STATE	WYOMING STATE	WYOMING STATE
VIENOMT	VIENOMT	EASTERN NAZARENNE	OHIO STATE	WILLIAMETTE	WYOMING STATE	WYOMING STATE	WYOMING STATE
DUKE	FORDHAM	DARTMOUTH	OHIO STATE	WILLIAMETTE	WYOMING STATE	WYOMING STATE	WYOMING STATE
U OF THE PACIFIC	CENTRAL STATE	OKLAHOMA	OHIO STATE	WILLIAMETTE	WYOMING STATE	WYOMING STATE	WYOMING STATE
OHIO STATE	SCANTON	OKLAHOMA	OHIO STATE	WILLIAMETTE	WYOMING STATE	WYOMING STATE	WYOMING STATE
PURDUE	KANSAS CITY	VIENOMT	OHIO STATE	WILLIAMETTE	WYOMING STATE	WYOMING STATE	WYOMING STATE
SOUTH CALIFORNIA	AUGUSTANA	MACCALISTER	OHIO STATE	WILLIAMETTE	WYOMING STATE	WYOMING STATE	WYOMING STATE
PRINCETON	U OF THE PACIFIC	BROOKLYN	OHIO STATE	WILLIAMETTE	WYOMING STATE	WYOMING STATE	WYOMING STATE
HARVARD	BAYLOR	OHIO STATE	OHIO STATE	WILLIAMETTE	WYOMING STATE	WYOMING STATE	WYOMING STATE
U.S. MIL. ACAD.	WAYNE STATE	BROOKLYN	OHIO STATE	WILLIAMETTE	WYOMING STATE	WYOMING STATE	WYOMING STATE
MIAMI	KANSAS ST. TEACHERS	U.S. MIL. ACAD.	OHIO STATE	WILLIAMETTE	WYOMING STATE	WYOMING STATE	WYOMING STATE
SOUTH CAROLINA	U.S. MIL. ACAD.	WILLIAMETTE	OHIO STATE	WILLIAMETTE	WYOMING STATE	WYOMING STATE	WYOMING STATE
DARTMOUTH	VIENOMT	OHIO STATE	OHIO STATE	WILLIAMETTE	WYOMING STATE	WYOMING STATE	WYOMING STATE
SAN DIEGO STATE	SOUTH CAROLINA	KINGS	OHIO STATE	WILLIAMETTE	WYOMING STATE	WYOMING STATE	WYOMING STATE
AUGUSTANA	VIENOMT	OHIO STATE	OHIO STATE	WILLIAMETTE	WYOMING STATE	WYOMING STATE	WYOMING STATE
UTTER	GEORGETOWN	OHIO STATE	OHIO STATE	WILLIAMETTE	WYOMING STATE	WYOMING STATE	WYOMING STATE
IDAHO STATE	HARVARD	OHIO STATE	OHIO STATE	WILLIAMETTE	WYOMING STATE	WYOMING STATE	WYOMING STATE
MACCALISTER	PURDUE	OHIO STATE	OHIO STATE	WILLIAMETTE	WYOMING STATE	WYOMING STATE	WYOMING STATE
WILLIAM JEWELL	OHIO STATE	OHIO STATE	OHIO STATE	WILLIAMETTE	WYOMING STATE	WYOMING STATE	WYOMING STATE
WILLAMETTE	WILLIAM JEWELL	OHIO STATE	OHIO STATE	WILLIAMETTE	WYOMING STATE	WYOMING STATE	WYOMING STATE
CENTRAL STATE	MACCALISTER	OHIO STATE	OHIO STATE	WILLIAMETTE	WYOMING STATE	WYOMING STATE	WYOMING STATE
KANSAS ST. TEACHERS	ALABAMA	OHIO STATE	OHIO STATE	WILLIAMETTE	WYOMING STATE	WYOMING STATE	WYOMING STATE
WAYNE STATE	FORT HAYS	OHIO STATE	OHIO STATE	WILLIAMETTE	WYOMING STATE	WYOMING STATE	WYOMING STATE
OKLAHOMA	SAN DIEGO STATE	OHIO STATE	OHIO STATE	WILLIAMETTE	WYOMING STATE	WYOMING STATE	WYOMING STATE
ALABAMA	DARTMOUTH	OHIO STATE	OHIO STATE	WILLIAMETTE	WYOMING STATE	WYOMING STATE	WYOMING STATE
SCANTON	KINGS	OHIO STATE	OHIO STATE	WILLIAMETTE	WYOMING STATE	WYOMING STATE	WYOMING STATE
KANSAS CITY	OKLAHOMA	OHIO STATE	OHIO STATE	WILLIAMETTE	WYOMING STATE	WYOMING STATE	WYOMING STATE
OREGON	KANSAS ST. TEACHERS	OHIO STATE	OHIO STATE	WILLIAMETTE	WYOMING STATE	WYOMING STATE	WYOMING STATE
ABILENE CHRISTIAN	MIAMI	OHIO STATE	OHIO STATE	WILLIAMETTE	WYOMING STATE	WYOMING STATE	WYOMING STATE
FORT HAYS	FORDHAM	OHIO STATE	OHIO STATE	WILLIAMETTE	WYOMING STATE	WYOMING STATE	WYOMING STATE
KANSAS ST. TEACHERS	GEORGETOWN	OHIO STATE	OHIO STATE	WILLIAMETTE	WYOMING STATE	WYOMING STATE	WYOMING STATE
BAYLOR		OHIO STATE	OHIO STATE	WILLIAMETTE	WYOMING STATE	WYOMING STATE	WYOMING STATE

II



# HISTORY



## HISTORY

This Spring marks the sixteenth occasion that the foremost debate teams in the nation have travelled to West Point to compete for the Sigurd S. Larmon Trophy, the award emblematic of the national collegiate debating championship.

The idea of the Tournament at West Point evolved from two sources at about the same time. The accelerated program during the war years of 1941-1945 left little time for extracurricular activities, but when the curriculum was again expanded to four years, Cadet Tom Schwinn, chairman of the recently reestablished Debate Council, arranged a small regional debate tournament. The success of this meeting encouraged the cadets to think in terms of a larger, more comprehensive tournament. Simultaneously, leaders in the debate community were considering the possibility of having a truly national tournament. The need, the location, and the level of interest gave the impetus necessary to transform the idea into the National Debate Tournament.

The ambition of the cadets and the interest of their collegiate associates probably would never have found form as a national tournament, however, had it not been for the aid and advice of such officers as General Maxwell D. Taylor, then Superintendent of the Military Academy; Colonel G. A. Lincoln, the present Professor and Head of the Department of Social Sciences at West Point, and Colonel Chester L. Johnson, at that time a member of the Department of Social Sciences. The generous support and encouragement these officers gave helped pave the way for the first National Tournament.

Administratively, little has changed in the Tournament's fifteen-year evolution. The Academy does not select the regional participants. The nation is divided into eight areas by a mathematical scheme determined by the debate population. The selection of the regional representatives becomes the responsibility of the member schools of each region. In every part of the country leaders in the forensic field give their valuable time to perform the necessary pre-Tournament district tasks that enable them to bring outstanding debate teams together for this event.

This Spring, thirty-eight teams representing a cross section of the finest inter-collegiate debating in the country are again gathered at West Point. That the National Debate Tournament is truly national in scope is a testament to the labor of the debate community and to the skill and enthusiasm of the teams and coaches. For that reason, the names of the outstanding district committeemen, participating schools, and debaters are included in this program as an essential part of the history of this Tournament.

Previous Winners

1947 Southeastern State College  
1948 North Texas State College  
1949 University of Alabama  
1950 University of Vermont  
1951 University of Redlands  
1952 University of Redlands  
1953 University of Miami  
1954 University of Kansas  
1955 University of Alabama  
1956 United States Military Academy  
1957 Augustana College  
1958 Northwestern University  
1959 Northwestern University  
1960 Dartmouth College  
1961 Harvard University

Previous Runners-Up

University of Southern California  
University of Florida  
Baylor University  
Augustana College  
Kansas State Teachers College at Emporia  
Baylor University  
College of the Holy Cross  
University of Florida  
Wilkes College  
St. Joseph's College  
United States Military Academy  
Harvard University  
Wisconsin State College at Eau Claire  
San Diego State College  
King's College

## HONOR ROLL OF DISTRICT NOMINATING COMMITTEES

Those who have been on their district nominating committees six or more times (exclusive of 1962).

### DISTRICT I

Arizona, California, Hawaii, Nevada, Utah

Emmet Long  
Alan Nichols  
John Ackley  
Upton Palmer  
Gene Moulton

George Pepperdine College  
University of California  
San Diego State College  
University of California  
University of Redlands

### DISTRICT II

Alaska, Idaho, Montana, Oregon, Washington, Wyoming

Charles Battin  
Albert E. Whitehead  
A. C. Hingston  
W. H. Veatch  
Theodore Karl

College of Puget Sound  
University of Idaho  
Pacific University  
Washington State University  
Pacific Lutheran College

### DISTRICT III

Arkansas, Louisiana, New Mexico, Oklahoma, Texas, Mississippi

Glenn Capp  
Wayne C. Eubank  
Waldo Braden  
D. J. Nabors  
R. D. Murphy

Baylor University  
University of New Mexico  
Louisiana State University  
East Central State College  
Southwest Louisiana Institute

### DISTRICT IV

Colorado, Iowa, Kansas, Minnesota, Missouri,  
Nebraska, North Dakota, South Dakota, Wisconsin

Ted Nelson  
Roy C. Nelson  
Grace Walsh  
Donald Olson  
Clara Chilson  
Kim Giffin

Saint Olaf College  
Colorado A & M  
Wisconsin State College at Eau Claire  
University of Nebraska  
Augustana College at Sioux Falls, S. D.  
University of Kansas

### DISTRICT V

Illinois, Indiana, Michigan, Ohio

Martin Holcomb  
Forest Seal  
Paul Carmack

Augustana College  
DePauw University  
Ohio State University

DISTRICT VI

Alabama, Florida, Georgia  
Kentucky, North Carolina, South Carolina, Tennessee

Dorothy Melzer  
Franklin R. Shirley  
M. G. Christopherson  
Annabel D. Hagood  
Donald Sprague  
J. Wetherby

Georgetown College  
Wake Forest College  
University of South Carolina  
University of Alabama  
University of Miami  
Duke University

DISTRICT VII

Delaware, District of Columbia, Maryland  
New Jersey, Pennsylvania, Virginia, West Virginia

Joseph O'Brien  
G. F. Henigan  
Gerald J. Murphy

Pennsylvania State University  
George Washington University  
Saint Peter's College

DISTRICT VIII

Connecticut, Maine, Massachusetts, New Hampshire,  
New York, Rhode Island, Vermont

Austin J. Freeley  
  
Robert B. Huber  
Herbert James

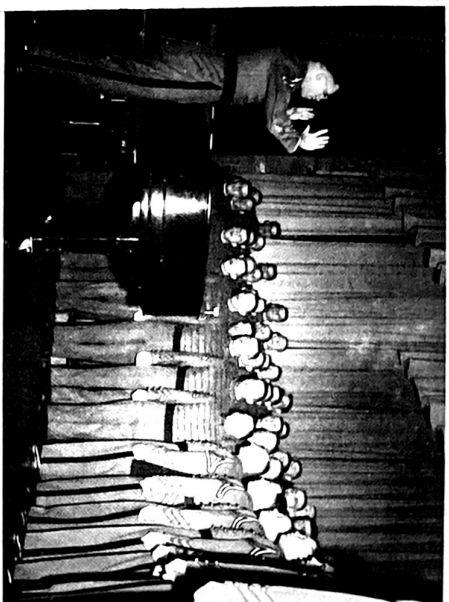
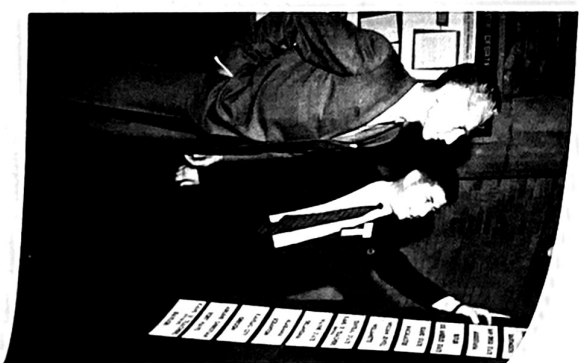
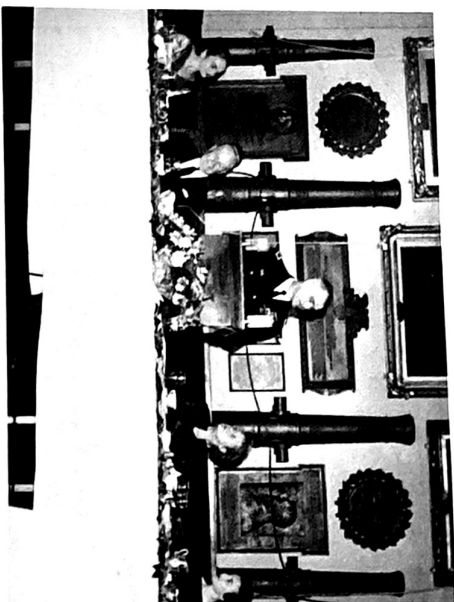
Boston University (currently at John  
Carroll University)  
University of Vermont  
Dartmouth College



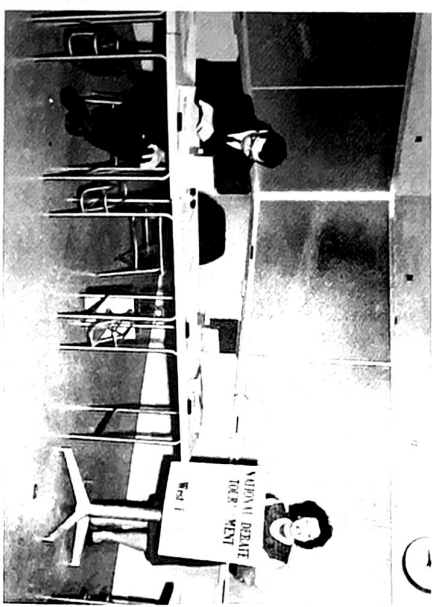
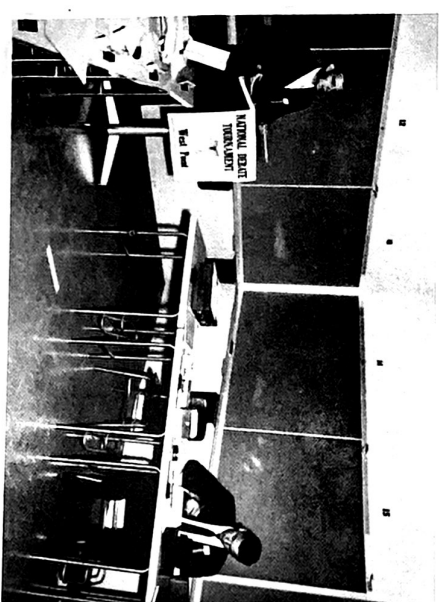
George Schell of Baylor receives the Hamilton Award from  
General Westmoreland

## HISTORY OF SCHOOL PARTICIPATION

<u>Participants</u>	<u>Years</u>
ABILENE CHRISTIAN COLLEGE (TEXAS)	55-58, 61
AMERICAN UNIVERSITY	61
ARIZONA STATE COLLEGE	47
AUGUSTANA COLLEGE (ILLINOIS)	47-60, 61
BATES COLLEGE (MAINE)	48
BAYLOR UNIVERSITY (TEXAS)	48-53, 55, 56, 58, 60, 61
BOSTON UNIVERSITY	60
BOWLING GREEN STATE UNIVERSITY (OHIO)	50, 51
BRADLEY UNIVERSITY (ILLINOIS)	51
BRIGHAM YOUNG UNIVERSITY (UTAH)	55, 56, 60
BROOKLYN COLLEGE	61
BUTLER UNIVERSITY (INDIANA)	59, 61
CAPITAL UNIVERSITY (OHIO)	48
CASE INSTITUTE OF TECHNOLOGY (OHIO)	53
CENTRAL STATE COLLEGE (OKLAHOMA)	52-54, 56, 61
CHAMPLAIN COLLEGE (NEW YORK)	49
COE COLLEGE (IOWA)	48
COLGATE UNIVERSITY (NEW YORK)	51
COLLEGE OF PUGET SOUND (WASHINGTON)	56, 57
COLLEGE OF SAINT THOMAS (MINNESOTA)	47, 49
COLLEGE OF THE HOLY CROSS (MASSACHUSETTS)	48, 51, 52-54
COLLEGE OF THE PACIFIC (CALIFORNIA)	58
COLLEGE OF WILLIAM AND MARY (VIRGINIA)	56
COLORADO UNIVERSITY	47, 48
DARTMOUTH COLLEGE (NEW HAMPSHIRE)	48, 51, 54-61
DAVID LIPSCOMB COLLEGE (TENNESSEE)	55
DEPAUW UNIVERSITY (INDIANA)	48, 49, 51, 57
DUKE UNIVERSITY (NORTH CAROLINA)	56-58, 61
EASTERN NAZARENE COLLEGE (MASSACHUSETTS)	58, 60, 61
FORDHAM UNIVERSITY (NEW YORK)	57, 59
FORDHAM UNIVERSITY SCHOOL OF EDUCATION (NEW YORK)	58, 59, 61
FORT HAYS KANSAS STATE COLLEGE	61
GEORGE PEPPERDINE COLLEGE (CALIFORNIA)	49-53
GEORGE WASHINGTON UNIVERSITY (D. C.)	49, 51, 52, 54, 58-60
GEORGETOWN UNIVERSITY (D. C.)	49, 52, 56, 61
GONZAGA UNIVERSITY (WASHINGTON)	47, 48, 59, 60
GREENVILLE COLLEGE (ILLINOIS)	56
HARVARD UNIVERSITY (MASSACHUSETTS)	50, 54-61
HIRAM COLLEGE (OHIO)	52
HOWARD UNIVERSITY (D. C.)	52, 54
IDAHO STATE COLLEGE	53, 57, 61
ILLINOIS COLLEGE	54
ILLINOIS STATE NORMAL UNIVERSITY	52, 54, 55
INDIANA STATE TEACHERS COLLEGE	47
IOWA STATE COLLEGE	52
KANSAS STATE COLLEGE	55
KANSAS STATE TEACHERS COLLEGE AT EMPORIA	51, 53, 58-61
KANSAS STATE TEACHERS COLLEGE AT PITTSBURG	61
KENT STATE UNIVERSITY (OHIO)	51
KING'S COLLEGE (PENNSYLVANIA)	59-61



# SCENES FROM 1961



<u>Participants</u>	<u>Years</u>
LOS ANGELES STATE COLLEGE (CALIFORNIA)	55, 56, 61
LOUISIANA COLLEGE	47-49, 53, 54
LOYOLA UNIVERSITY	60
LUTHER COLLEGE (IOWA)	50
MACALESTER COLLEGE (MINNESOTA)	56, 61
MARIETTA COLLEGE (OHIO)	59
MARQUETTE UNIVERSITY (WISCONSIN)	58
MASSACHUSETTS INSTITUTE OF TECHNOLOGY	48, 49, 56-58
MICHIGAN STATE COLLEGE	53
MIDDLEBURY COLLEGE (VERMONT)	55
MIDLAND COLLEGE (NEBRASKA)	53
MONTANA STATE UNIVERSITY	51, 60
MOUNT MERCY COLLEGE (PENNSYLVANIA)	53
NEBRASKA WESLEYAN UNIVERSITY	51, 52, 54, 55
NEW YORK STATE UNIVERSITY TEACHERS COLLEGE AT GENESEO	53
NORTH TEXAS STATE COLLEGE	48, 49, 59
NORTHWESTERN UNIVERSITY (ILLINOIS)	47, 49, 50, 54, 55, 58-61
OCCIDENTAL COLLEGE (CALIFORNIA)	53
OHIO STATE UNIVERSITY	47, 52, 60, 61
OKLAHOMA BAPTIST UNIVERSITY	47
OREGON STATE COLLEGE	47, 48, 54
OTTOWA UNIVERSITY (KANSAS)	49
PACIFIC LUTHERAN UNIVERSITY (WASHINGTON)	52, 56
PACIFIC UNIVERSITY (OREGON)	49, 55-57
PENNSYLVANIA STATE UNIVERSITY	47, 50, 52, 55
PHILLIPS UNIVERSITY (OKLAHOMA)	49
PRINCETON UNIVERSITY (NEW JERSEY)	51, 53, 56-58, 61
PURDUE UNIVERSITY (INDIANA)	47, 48, 50, 60, 61
RICE INSTITUTE (TEXAS)	57
ROANOKE COLLEGE (VIRGINIA)	50
RUTGERS UNIVERSITY (NEW JERSEY)	47
SAINT ANSELM'S COLLEGE (NEW HAMPSHIRE)	56, 59
SAINT JOHN'S UNIVERSITY (NEW YORK)	53, 54
SAINT JOSEPH'S COLLEGE (PENNSYLVANIA)	55-57, 59
SAINT MARTIN'S COLLEGE (WASHINGTON)	51, 53, 59
SAINT MARY'S COLLEGE (MINNESOTA)	49
SAINT OLAF COLLEGE (MINNESOTA)	48, 49, 51-53, 57
SAINT PETER'S COLLEGE (NEW JERSEY)	51, 53, 55, 57, 59
SAN DIEGO STATE COLLEGE (CALIFORNIA)	49, 52-61
SETON HALL UNIVERSITY (NEW JERSEY)	60
SMITH COLLEGE (MASSACHUSETTS)	52
SOUTH DAKOTA STATE COLLEGE	54
SOUTHEASTERN STATE COLLEGE (OKLAHOMA)	47-50, 59
SOUTHERN ILLINOIS UNIVERSITY	57, 59, 60
SOUTHERN METHODIST UNIVERSITY (TEXAS)	50, 52
SOUTHWEST MISSOURI STATE COLLEGE	52, 55, 57, 59, 60
SOUTHWESTERN COLLEGE (KANSAS)	56, 57
STANFORD UNIVERSITY (CALIFORNIA)	49
STATE COLLEGE OF WASHINGTON	47, 50, 54, 58
STEVENS INSTITUTE OF TECHNOLOGY (NEW JERSEY)	49
SWARTHMORE COLLEGE (PENNSYLVANIA)	48

<u>Participants</u>	<u>Years</u>
TEMPLE UNIVERSITY (PENNSYLVANIA)	49
TENNESSEE POLYTECHNIC INSTITUTE	55
TEXAS CHRISTIAN UNIVERSITY	47, 48, 51, 60
UNION COLLEGE AND UNIVERSITY (NEW YORK)	55
U. S. AIR FORCE ACADEMY (COLORADO)	59, 60
U. S. MERCHANT MARINE ACADEMY (NEW YORK)	52, 53, 59
U. S. NAVAL ACADEMY (MARYLAND)	47-50, 58
UNIVERSITY OF ALABAMA	48-50, 53-56, 58, 60, 61
UNIVERSITY OF ARIZONA	49, 50
UNIVERSITY OF ARKANSAS	50
UNIVERSITY OF CALIFORNIA, LOS ANGELES	48, 54
UNIVERSITY OF CHICAGO (ILLINOIS)	48, 49
UNIVERSITY OF DENVER	54
UNIVERSITY OF FLORIDA	48, 50-57, 59
UNIVERSITY OF HOUSTON (TEXAS)	51, 53-59
UNIVERSITY OF IDAHO	52, 55, 58
UNIVERSITY OF ILLINOIS	56, 57
UNIVERSITY OF ILLINOIS, CHICAGO	52-54, 56, 58
UNIVERSITY OF KANSAS	48-60
UNIVERSITY OF KANSAS CITY	61
UNIVERSITY OF MIAMI (FLORIDA)	52-55, 57-61
UNIVERSITY OF KENTUCKY	60
UNIVERSITY OF MISSISSIPPI	47, 51, 52
UNIVERSITY OF MONTANA	49, 50
UNIVERSITY OF NEVADA	48
UNIVERSITY OF NEW MEXICO	51, 52, 54
UNIVERSITY OF NOTRE DAME (INDIANA)	47-53, 55-58
UNIVERSITY OF OKLAHOMA	57-61
UNIVERSITY OF OREGON	60, 61
UNIVERSITY OF PACIFIC	61
UNIVERSITY OF PENNSYLVANIA	49-51, 54, 57-60
UNIVERSITY OF PITTSBURGH (PENNSYLVANIA)	53, 57, 60
UNIVERSITY OF REDLANDS (CALIFORNIA)	50-52, 57-59
UNIVERSITY OF RICHMOND (VIRGINIA)	56
UNIVERSITY OF SAN FRANCISCO (CALIFORNIA)	56, 58
UNIVERSITY OF SCRANTON	61
UNIVERSITY OF SOUTH CAROLINA	50, 51, 54, 56-61
UNIVERSITY OF SOUTHERN CALIFORNIA	47, 48, 50-52, 54, 57-61
UNIVERSITY OF TENNESSEE	50, 51
UNIVERSITY OF TEXAS	47, 60
UNIVERSITY OF THE SOUTH (TENNESSEE)	49
UNIVERSITY OF UTAH	47, 48, 50, 51
UNIVERSITY OF VERMONT	47-51, 53-57, 60, 61
UNIVERSITY OF VIRGINIA	47
UNIVERSITY OF WASHINGTON	55
UNIVERSITY OF WEST VIRGINIA	53
UNIVERSITY OF WICHITA (KANSAS)	48
UTICA COLLEGE (NEW YORK)	50, 51
WABASH COLLEGE (INDIANA)	55
WAKE FOREST COLLEGE (NORTH CAROLINA)	47, 48, 50, 52-56, 59
WASHBURN UNIVERSITY OF TOPEKA (KANSAS)	56, 58
WAYNE STATE UNIVERSITY (MICHIGAN)	58, 61



Participants

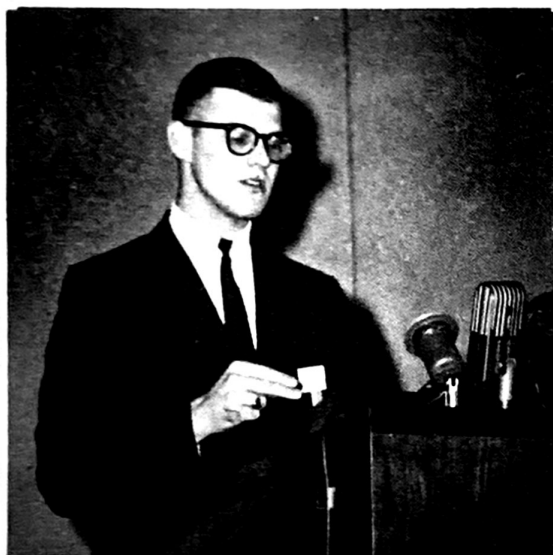
WESLEYAN UNIVERSITY (CONNECTICUT)  
WHEATON COLLEGE (ILLINOIS)  
WHITMAN COLLEGE (WASHINGTON)  
WILKES COLLEGE (PENNSYLVANIA)  
WILLAMETTE UNIVERSITY (OREGON)  
WILLIAM JEWELL COLLEGE (MISSOURI)  
WISCONSIN STATE COLLEGE AT EAU CLAIRE  
XAVIER UNIVERSITY (OHIO)  
YALE UNIVERSITY (CONNECTICUT)

Years

50, 52  
47, 59  
50, 59  
54, 55, 57, 58  
48, 49, 51, 52, 55, 61  
60, 61  
50, 53-59  
58  
47, 49

\* \* \*

FINAL DEBATE 1961



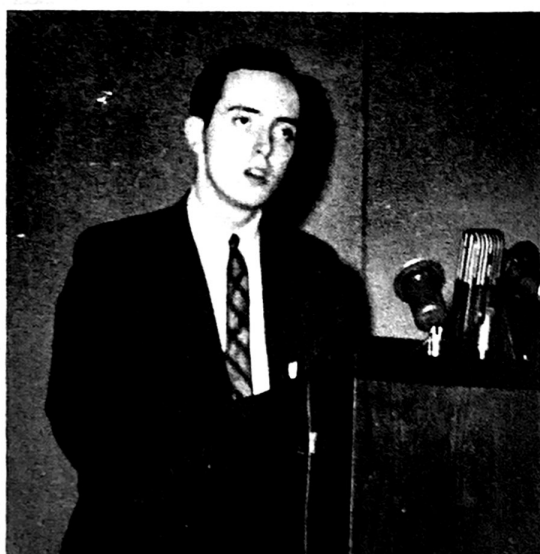
GENE CLEMENTS  
HARVARD



LAWRENCE TRIBE  
HARVARD



PETER SMITH  
KING'S COLLEGE



FRANK HARRISON  
KING'S COLLEGE

FIFTEENTH NATIONAL DEBATE TOURNAMENT  
WEST POINT, NEW YORK  
26-29 APRIL 1961

FINAL RESULTS

The Fifteenth National Debate Tournament was held at the United States Military Academy from 26-29 April inclusive. Thirty-eight teams from the eight national districts debated eight seeding rounds of strength versus strength pairings the first two days, and the top sixteen teams participated in four elimination rounds on the final day.

Harvard University won the National Debate Tournament and became the possessor for one year of the Sigurd S. Larmon Trophy. Debating the affirmative side of the national debate topic, Resolved, That the United States should adopt a program of compulsory health insurance for all citizens. Harvard defeated King's College of Wilkes-Barre, Pennsylvania in the final round by a 4-3 vote.

On the evening of 28 April, following the completion of eight seeding rounds, a banquet was held in Cullum Hall. Mr. Sigurd S. Larmon, Chairman of the Board of Young and Rubicam, Inc., gave the principal address, and the top sixteen teams were announced as were the two speakers receiving the highest number of speakers' points. George Schell of Baylor and Laurence Tribe of Harvard, the two top speakers, were presented Hamilton electric wrist watches. The watches presented to the two top speakers have been designated the Lt. George W. P. Walker Memorial Awards, in memory of the former West Point debater and Tournament winner. The members of the two finalist teams, Laurence Tribe and Gene Clements of Harvard and Frank Harrison and Peter Smith of King's College, each received prize watches, designated as the Hamilton Award, following the final debate. These watches were made possible through the courtesy of the Hamilton Watch Company, Lancaster, Pennsylvania.

The sixteen teams entering the elimination rounds Saturday were selected on the following basis:

- First, on the number of debates won during the seeding rounds.
- Second, in case of ties, on the number of judges' votes received.
- Third, if a tie still existed, on total team points.

The top sixteen teams and their seeding round records were:

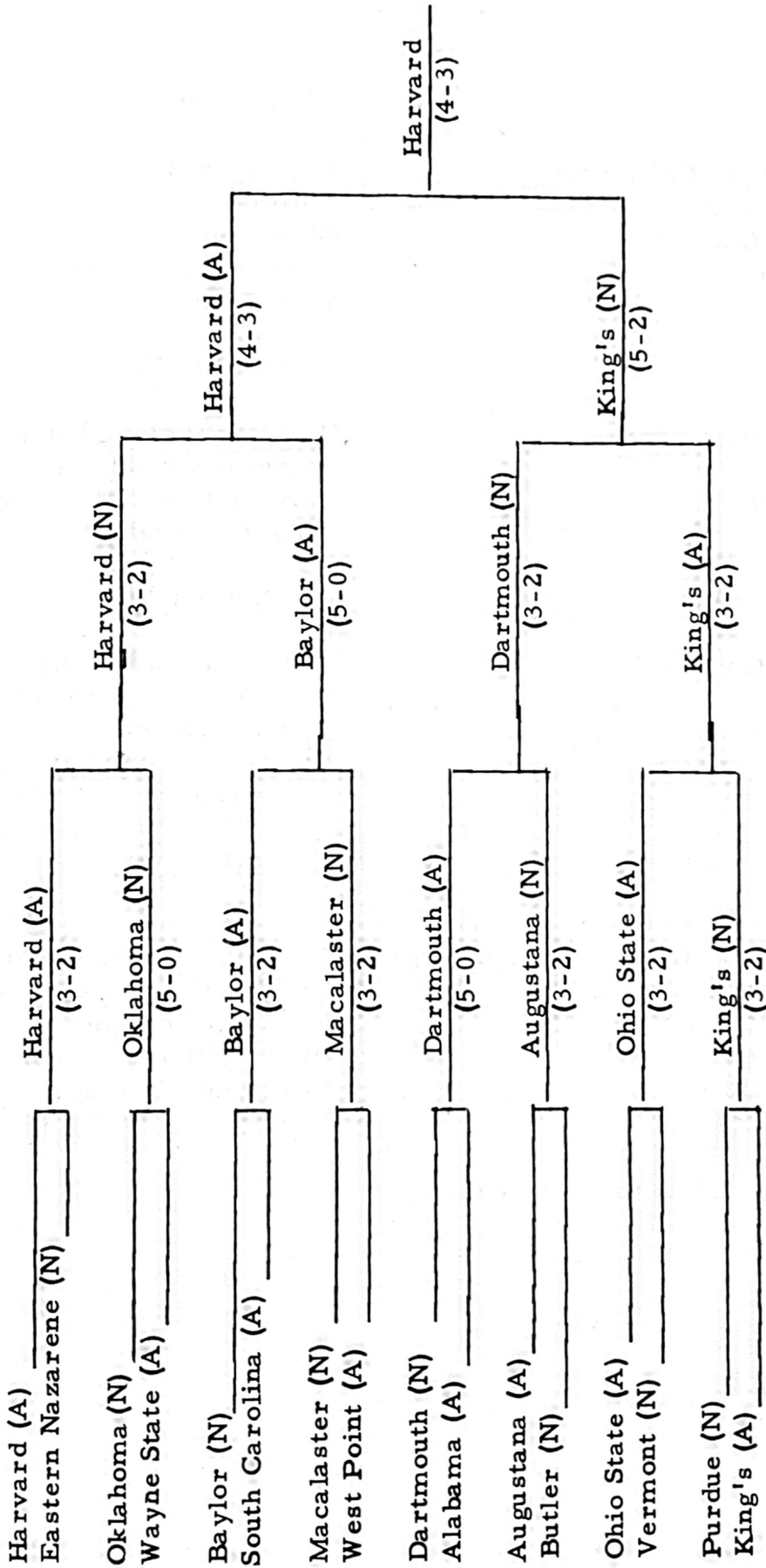
<u>Team</u>	<u>Wins</u>	<u>Judges' Votes</u>	<u>Team Points</u>
1. Alabama	7	16	1003
2. Baylor	6	17	1044
3. King's	6	16	983
4. Oklahoma	6	16	935
5. Harvard	6	15	1025
6. Vermont	6	14	918
7. West Point	5	15	1017
8. Augustana	5	15	1009
9. Butler	5	15	933
10. Macalaster	5	15	889
11. Ohio State	5	14	971
12. Eastern Nazarene	5	14	935
13. Wayne State	5	13	991
14. Purdue	5	12	949
15. South Carolina	4	15	927
16. Dartmouth	4	14	982

	<u>Seeding Rounds</u>								<u>Totals</u>
	<u>I</u>	<u>II</u>	<u>III</u>	<u>IV</u>	<u>V</u>	<u>VI</u>	<u>VII</u>	<u>VIII</u>	
Affirmative Wins	10	9	7	12	11	10	13	9	81
Negative Wins	9	10	12	7	8	9	6	10	71
Split Decisions	3	7	8	12	8	9	5	7	59

Top Speakers

<u>Name</u>	<u>School</u>	<u>Speaker's Points</u>
1. George Schell	Baylor University	1062
2. Laurence Tribe	Harvard University	1044
3. Frank Harrison	King's College	1038
4. Gene Clements	Harvard University	1032
5. Craig Baumberger	Alabama	1030
6. Richard Smith	Augustana	1026
7. Clinton Coddington	West Point	1025
8. Gary Sherrer	Kansas State - Emporia	1014
9. Paul Nine	Wayne State	1011
10. Joe Cook	Alabama	1009
11. Reginald Brown	West Point	1006
12. John Siefkin	Augustana	1004
13. Michael Henke	Baylor	1003
14. Harold Lawson	Kansas State - Emporia	1002
15. Allen Rule	Ohio State	992
16. Stephen Kogan	Miami	977
16. Frank Mahady	Dartmouth	977
18. Ron Walstrom	William Jewell	976
19. Dale William	Ohio State	968
20. Laurence Wilson	Dartmouth	966

ELIMINATION ROUNDS



A tape recording of the final debate is available to all interested parties. Send a blank 1800 ft. tape to Mr. J. Deaton, Signal Corps Recording Studio, USMA, West Point, New York, and the debate will be transcribed and returned. Please specify the speed at which the recording is to be made.

## 1961 Participating Schools

### District I

University of Southern California  
University of the Pacific  
Los Angeles State College  
San Diego State College

### District II

Williamette University  
Idaho State College  
University of Oregon

### District III

Abilene Christian College  
Baylor University  
Central State College  
Oklahoma University

### District IV

Kansas State Teachers College at Emporia  
Kansas State Teachers College at Pittsburg  
Fort Hays Kansas State College  
University of Kansas City  
Macalester College  
William Jewell College

### District V

Augustana College  
Butler University  
Ohio State University  
Purdue University  
Wayne State University

### District VI

University of Alabama  
University of Miami  
University of South Carolina  
Duke University

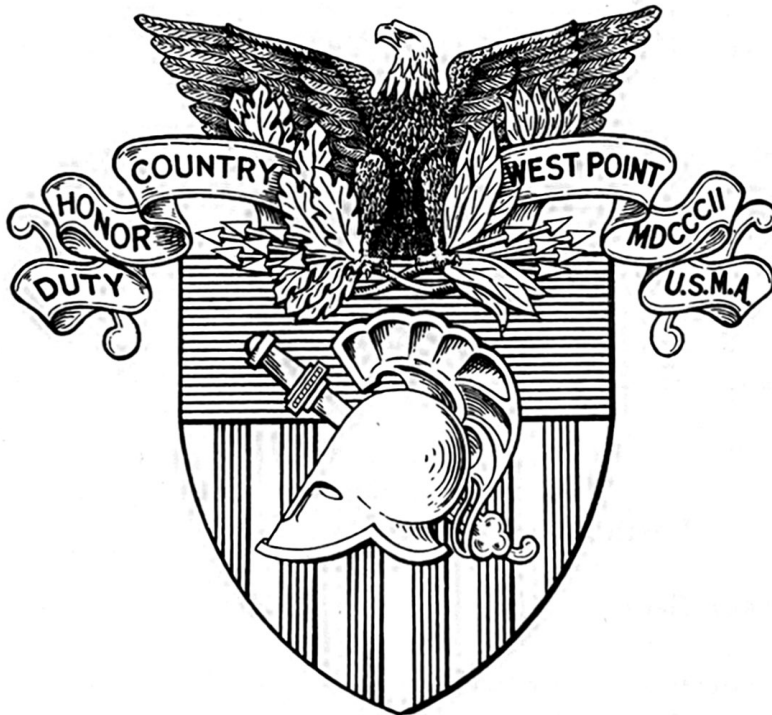
### District VII

American University  
Georgetown University  
King's College  
Princeton University  
University of Scranton

### District VIII

Harvard University  
Fordham School of Education  
Eastern Nazarene College  
Brooklyn College  
University of Vermont  
Dartmouth College

West Point participated as the host team.



SIXTEENTH NATIONAL DEBATE TOURNAMENT

## CHAIRMEN AND COMMITTEES FOR 1962

### DISTRICT I

Arizona, California, Hawaii, Nevada, Utah

Chairman Professor Robert L. Benjamin, San Diego State College  
Professor Jon Erickson, Stanford University  
Professor Howard Holladay, Los Angeles State College  
Professor Jack Howe, University of Arizona  
Professor Rex Robinson, Utah State University  
Professor Mike Schon, Loyola University  
Professor Ed Steele, Humboldt State College

### DISTRICT II

Alaska, Idaho, Montana, Oregon, Washington, Wyoming

Chairman Professor W. Scott Nobles, University of Oregon  
Professor A. C. Hingston, Pacific University  
Professor Theodore Karl, Pacific Lutheran University  
Professor Will Corbin, Idaho State College  
Professor Lester Lawrence, Montana State University

### DISTRICT III

Arkansas, Louisiana, New Mexico, Oklahoma, Texas,  
Mississippi

Chairman Professor Glenn R. Capp, Baylor University  
Professor Wayne Brockriede, University of Oklahoma  
Professor John Graham, Central Oklahoma State College  
Professor Roy D. Murphy, University of Southwestern Louisiana  
Professor Fred Tewell, Oklahoma State University

### DISTRICT IV

Colorado, Iowa, Kansas, Minnesota, Missouri, Nebraska,  
North Dakota, South Dakota, Wisconsin

Chairman Professor Georgia Bowman, William Jewell College  
Professor John Debross, Kansas State Teachers College  
Professor Harold Jordan, University of South Dakota  
Professor Donald Olson, University of Nebraska  
Professor Francis Short, Kansas State Teachers College  
Professor Grace Walsh, Wisconsin State College  
Professor Kenneth Wilkens, Saint Olaf College

DISTRICT V  
Illinois, Indiana, Michigan, Ohio

Chairman

Professor Ronald F. Reid, Purdue University  
Professor Brock Brentlinger, Greenville College  
Professor Martin Holcomb, Augustana College  
Professor Richard Rieke, Ohio State University  
Professor Stanley Rives, Illinois State Normal University  
Professor Robert Weiss, DePauw University  
Professor George Ziegelmüller, Wayne State University

DISTRICT VI  
Alabama, Florida, Georgia, Kentucky, North Carolina,  
South Carolina, Tennessee

Chairman

Professor Joseph Wetherby, Duke University  
Professor M. G. Christopherson, University of South Carolina  
Professor Annabel D. Hagood, University of Alabama  
Professor Franklin Shirley, Wake Forest College  
Professor Donald Sprague, University of Miami  
Professor G. Allen Yeomans, Howard College

DISTRICT VII  
Delaware, District of Columbia, Maryland, New Jersey,  
Pennsylvania, Virginia, West Virginia

Chairman

Professor Donald L. McConkey, William and Mary College  
Professor Bert Bradley, University of Richmond  
Professor Harold Chinn, Morgan State College  
Reverend Joseph F. X. Erhart, Saint Joseph's College  
Professor George Henigan, George Washington University  
Professor William Reynolds, Georgetown University

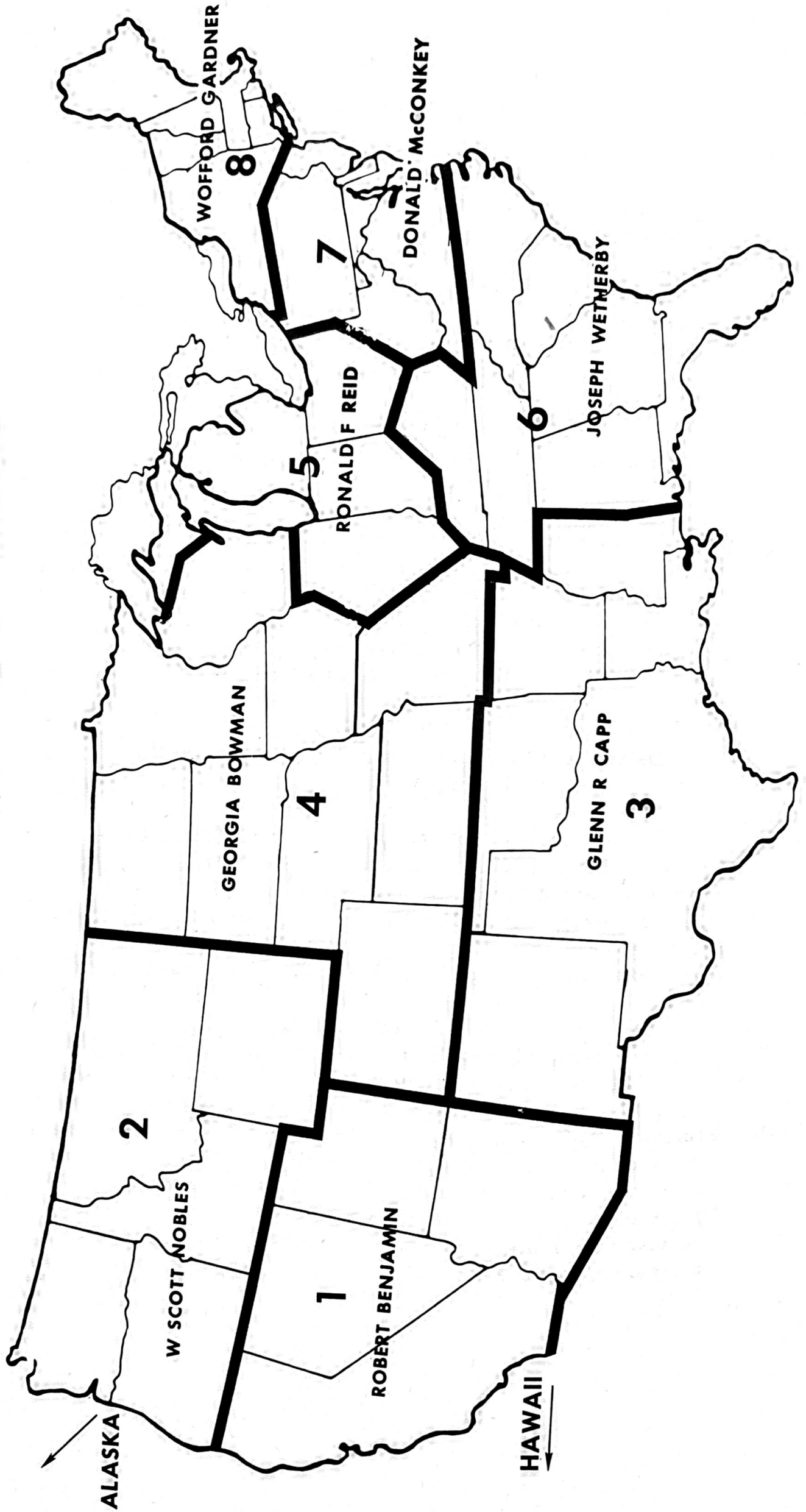
DISTRICT VIII  
Connecticut, Maine, Massachusetts, New Hampshire,  
New York, Rhode Island, Vermont

Chairman

Professor Wofford G. Gardner, University of Maine  
Professor Ronald Allen, Amherst College  
Professor James J. Hall, St. John's University  
Professor Herb L. James, Dartmouth College  
Professor Paul G. McGrady, College of the Holy Cross  
Professor Charles Parkhurst, Brooklyn College



# DISTRICTS AND CHAIRMEN



## GUEST JUDGES

Sister Mary Agnite  
D'Youville College  
Buffalo 3, New York

Prof. William A. Behl  
Brooklyn College  
Brooklyn, New York

Prof. John P. Belniak  
Harpur College  
Binghamton, New York

Prof. Jane Blankenship  
Mount Holyoke College  
South Hadley, Massachusetts

Dr. James Boyle  
King's College  
Wilkes-Barre, Pennsylvania

Prof. Paul D. Brandes  
Ohio University, College of Fine Arts  
Athens, Ohio

Prof. Brock Brentlinger  
Greenville College  
Greenville, Illinois

Mr. John A. Burgess  
Box 493  
Bennington, Vermont

Prof. J. Kenna Burke  
Potomac State College  
Kayser, West Virginia

Prof. James Cameron  
Eastern Nazarene College  
Quincy, Massachusetts

Prof. Robert Carr  
Wisconsin State College  
Oshkosh, Wisconsin

Prof. Harold B. Chinn  
Morgan State College  
Baltimore 12, Maryland

Mr. Robert E. Connelly  
King's College  
Wilkes-Barre, Pennsylvania

Prof. W. N. Corbin  
Idaho State College  
Pocatello, Idaho

Prof. Russell N. De Vinney  
53 E. Susquehanna  
Allentown, Pennsylvania

Prof. Agnes G. Doody  
University of Rhode Island  
Kingston, Rhode Island

Prof. Paul J. Dovre  
Northwestern University  
Evanston, Illinois

Prof. T. G. Ehrsam  
New York University  
New York 3, New York

Rev. Joseph F. X. Erhart  
St. Joseph's College  
Philadelphia 31, Pennsylvania

Lt. (jg) L. J. Flink  
United States Naval Academy  
Annapolis, Maryland

Sister M. Florentine  
Mount Saint Joseph Teachers College  
Buffalo, New York

Prof. Dwight Freshley  
Vanderbilt University  
Nashville, Tennessee

Prof. Wofford Gardner  
University of Maine  
Orono, Maine

Prof. John Geir  
Northwestern College  
Watertown, Wisconsin

Prof. John Graham  
Central Oklahoma State College  
Edmund, Oklahoma

Prof. Mary Graham  
Brooklyn College  
Brooklyn, New York

Mr. G. Franklin Grimm  
Shadyside Academy  
Pittsburgh 38, Pennsylvania

Prof. Frank G. Harrison  
Brandeis University  
Waltham, Massachusetts

Prof. J. Bailey Harvey  
College of the City of New York  
New York 31, New York

Prof. Martin J. Holcomb  
Augustana College  
Rock Island, Illinois

Prof. Howard Holladay  
Los Angeles State College  
Los Angeles, California

Dean Charles H. Holmes  
School of Speech, Syracuse University  
Syracuse, New York

Prof. David Horlacker  
Bucknell University  
Lewisburg, Pennsylvania

Prof. Joan E. Horrigan  
State Teachers College  
Framingham, Massachusetts

Prof. Jack Howe  
University of Arizona  
Tucson, Arizona

Prof. Dennis R. Hunt  
Harvard University  
Cambridge 38, Massachusetts

Prof. Theodore Jackson  
Illinois State Normal University  
Normal, Illinois

Prof. Herbert L. James  
Dartmouth College  
Hanover, New Hampshire

Prof. Warwick F. Kelloway  
Quinnipiac College  
Hamden, Connecticut

Prof. J. B. Key  
United States Naval Academy  
Annapolis, Maryland

Prof. Stanley  
Colgate University  
Hamilton, New York

Prof. Sue Kistler  
Salem College  
Salem, West Virginia

Miss Karlyn Kohn  
State College  
Brockport, New York

Mr. Richard Lanson  
Wayne Central School  
Ontario Center, New York

Prof. L. A. Lawrence  
Montana State College  
Bozeman, Montana

Mr. Robert Letro  
Jamestown High School  
Jamestown, New York

L/CDR Victor J. Lugowski  
United States Merchant Marine Academy  
Kings Point, New York

Prof. John A. Lynch  
St. Anselm's College  
Manchester, New Hampshire

Mrs. Ihde Markstrom  
D'Youville College  
Buffalo 3, New York

Prof. David Matheny  
Texas Christian University  
Fort Worth, Texas

Mr. James E. Mundy  
Woodbridge High School  
Woodbridge, New Jersey

Prof. Roy D. Murphy  
Southwestern Louisiana Institute  
Lafayette, Louisiana

Mrs. Audrey O'Brien  
St. John's University  
Brooklyn 6, New York

Prof. L. S. Perkins  
Brooklyn College  
Brooklyn, New York

Prof. Mel Pic'l  
George Pepperdine College  
Los Angeles 44, California

Prof. R. R. Rodman  
Nichol College  
Dudley, Massachusetts

Mr. Saul Rossien  
Trenton Central High School  
Trenton, New Jersey

Prof. Robert L. Scott  
University of Minnesota  
Minneapolis 14, Minnesota

Prof. William Seifrit  
West Virginia Wesleyan  
Buckhannon, West Virginia

Prof. Edward Shankin  
Pratt Institute  
Brooklyn 5, New York

Mr. Franklin R. Shirley  
Wake Forest College  
Winston-Salem, North Carolina

Rev. John D. Skalko  
Providence College  
Providence, Rhode Island

Prof. Robert G. Smith  
Colgate University  
Hamilton, New York

Mr. E. Thomas Starcher  
University of Maryland  
College Park, Maryland

Prof. Warren L. Strausbaugh  
University of Maryland  
College Park, Maryland

Prof. Elwood Tame  
Bethany Nazarene College  
Bethany, Oklahoma

Prof. Jimmie D. Trent  
Kansas State Teacher's College  
Emporia, Kansas

Prof. Grace Walsh  
Wisconsin State College  
Eau Claire, Wisconsin

Prof. Herbert A. Wessling  
Stonehill College  
North Easton, Massachusetts

Prof. Joseph Wetherby  
Duke University  
Durham, North Carolina

Mr. George Ziegelmueller  
Wayne State University  
Detroit 2, Michigan

WHO'S WHO  
PARTICIPATING DEBATERS AND COACHES

District I

Brigham Young University  
Coach: Prof. Robert Boren  
Debaters: Reba Keele  
Sally Kirkman

San Diego State College  
Coach: Robert L. Benjamin  
Debaters: Bruce Chassey  
Dick Castro

Loyola University of Los Angeles  
Coach: Prof. Michael Schon  
Debaters: Steve Schriffirin  
Jerry Uelmen

University of Redlands  
Coach: Prof. Eugene Moulton  
Debaters: Earl Armbrust  
Dick Strong

District II

Gonzaga University  
Coach: Father Joseph P. O'Connell  
Debaters: Thomas D. Coughlin  
Robert I. Lasley

University of Oregon  
Coach: Prof. Scott Nobles  
Debaters: Bill Austin  
Lee Smith

Pacific Lutheran University  
Coach: Prof. Theodore Karl  
(represented by Prof. A. C. Hingston)  
Debaters: Richard Helstrom  
John Stewart

District III

Baylor University  
Coach: Prof. Glenn. R. Capp  
Debaters: Calvin Kent  
Mike Henke

North Texas State University  
Coach: Prof. William DeMougeot  
Debaters: Anne Hodges  
John Swaney

Northeastern Oklahoma State College  
Coach: Prof. Valgene Littlefield  
Debaters: Glen Strickland  
Rennard Strickland

Texas Christian University  
Coach: Prof. David Matheny  
Debaters: Ron Johnson  
Bill English

District IV

Kansas State Teachers' College  
Coach: Prof. John DeBross  
Debaters: Harold Lawson  
Gary Sherrer

Southwest Missouri State College  
Coach: Prof. Holt V. Spicer  
Debaters: Gary Nelms  
Jack Garrett

Rockhurst College  
Coach: William R. Hiatt  
Debaters: Charles House  
James Beckley

University of Kansas City  
Coach: Prof. Walter Murrish  
Debaters: William Isenhour  
William Cohen

Saint Olaf College  
Coach: Prof. Kenneth Wilkins  
Debaters: Gene Knorr  
James Kittelson

University of Minnesota  
Coach: Prof. Robert L. Scott  
Debaters: David Krause  
Andre Zdrasil

Illinois State Normal University  
Coach: Prof. Stanley Rives  
Debaters: Keith Runyon  
Virginia Smith

Northwestern University  
Coach: Prof. Frank Nelson  
Debaters: Lee Huebner  
David Copus

District V

Purdue University  
Coach: Prof. Ronald F. Reid  
Debaters: Donald Mahley  
Timothy Pickering

Southern Illinois University  
Coach: Prof. Jack Parker  
Debaters: Richard Fulkerson  
Sharon Loveless

Ohio State University  
Coach: Prof. Richard Rieke  
Debaters: Dale Williams and Sarah Benson

Tennessee Polytechnic Institute  
Coach: Prof. Herman Pinkerton  
Debaters: David King  
Bill Carrington

University of Florida  
Coach: Prof. Gerald Mohrman  
Debaters: Joseph Fleming  
William Biglow

District VI

University of Miami  
Coach: Prof. Donald Sprague  
Debaters: Neal Sonnett  
Barry Richard

University of South Carolina  
Coach: Prof. M. G. Christopherson  
Debaters: Edward Roberts  
James Mann

George Washington University  
Coach: Prof. George Henigan  
Debaters: Stanley Remsberg  
Barbara Sue Carter

District VII

University of Pittsburgh  
Coach: Prof. Robert Newman  
Debaters: Edward Barker  
Joseph Hallal

Georgetown University  
Coach: Prof. William Reynolds  
Debaters: John Brough  
John Hemplemann

University of Richmond  
Coach: Prof. Bert Bradley  
Debaters: Strother Smith  
Jerry Becker

Saint Peter's College  
Coach: Rev. Gerard Murphy  
Debaters: Thomas Collins and Bryan Griffin

District VIII

Boston College  
Coach: Prof. John H. Lawton  
Debaters: James Unger  
William Abell

Massachusetts Institute of Technology  
Coach: Prof. Richard F. Smith  
Debaters: Glen Books  
Bill Morris

College of the Holy Cross  
Coach: Rev. Paul McGrady  
Debaters: Kevin Keogh  
Dan Kalb

Saint Johns University  
Coach: Prof. James J. Hall  
Debaters: John Greg  
John Fleming

Harvard University  
Coach: Prof. George Wade  
Debaters: A. Alschuler  
A. Doss

University of Vermont  
Coach: Prof. Robert B. Huber  
Debaters: Gilbert Tornabene and Marilyn Van Graber

HOST: United States Military Academy, West Point, New York  
COACH: Captain Harvey A. Garn  
DEBATERS: Raoul H. Alcala & David W. Moore



WHO'S NEXT ?



ELIMINATION  
LADDER

