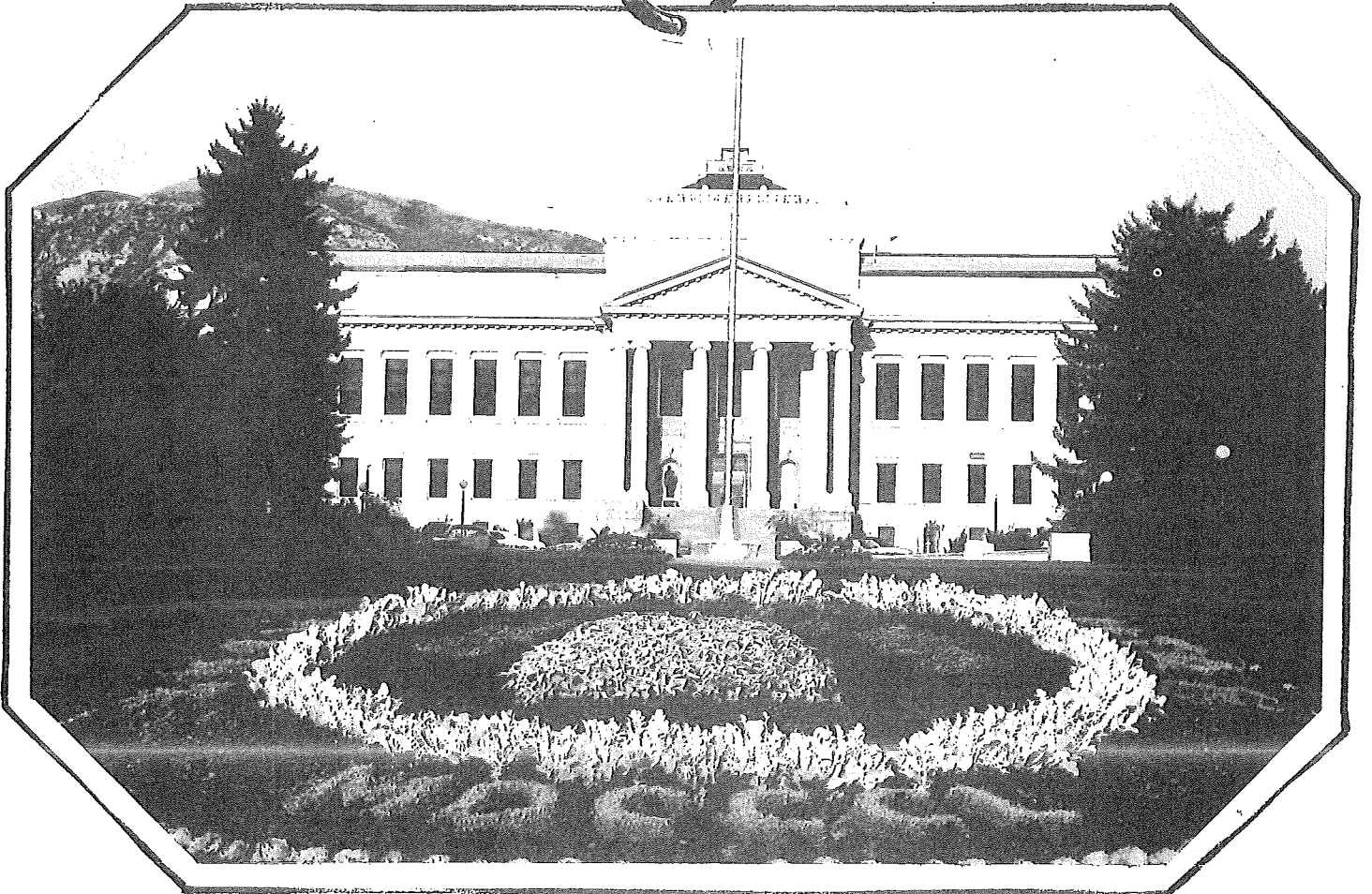


FREE NATIONAL DEBATE TOURNAMENT

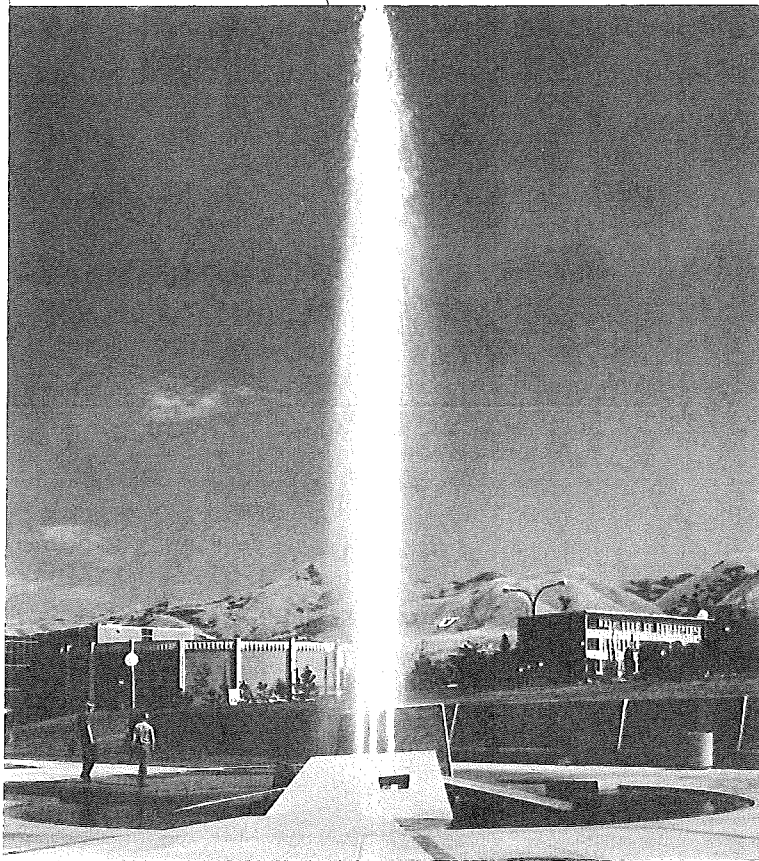
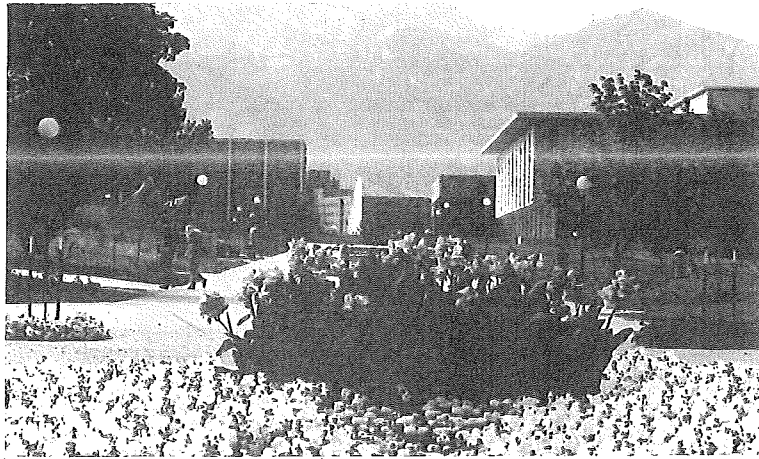




26
NATIONAL
DEBATE
TOURNAMENT

SPONSORED BY AMERICAN FORENSIC ASSOCIATION

HOSTED BY UNIVERSITY OF UTAH
SALT LAKE CITY, UTAH



**RESOLVED: THAT GREATER CONTROLS
SHOULD BE IMPOSED ON THE
GATHERING AND UTILIZATION OF
INFORMATION ABOUT U.S. CITIZENS BY
GOVERNMENT AGENCIES.**

THE UNIVERSITY OF UTAH
SALT LAKE CITY 84112

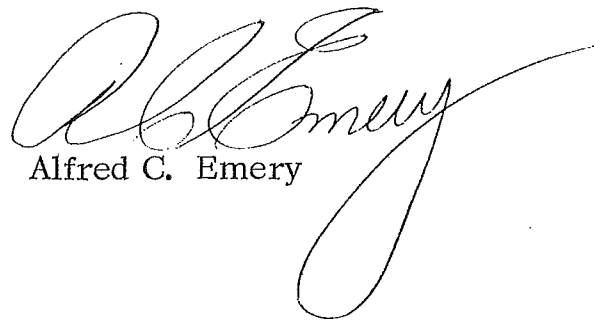
ALFRED C. EMERY
President

April 14, 1972

A warm greeting to participants
in the 26th National Debate Tournament

It is a great pleasure to have your national tournament take place on this campus. I hope you will find it a stimulating setting for the vigorous and demanding activities associated with debate.

Please be at home here and know that we will follow your tournament with keen interest.



Alfred C. Emery



The Sigurd S. Larmon Trophy awarded each year to the Champion of the National Debate Tournament. The trophy was donated by Mr. Larmon.

NATIONAL DEBATE TOURNAMENT

March 25, 1972

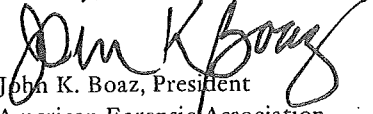
To All Participants in the
26th National Debate Tournament:

On behalf of the American Forensic Association permit me to extend to you a warm welcome to the Twenty Sixth National Debate Tournament. This tournament has traditionally attracted some of the finest students in American colleges and universities, students who have proceeded to positions of great responsibility in many walks of our society. As a student and debater you are to be congratulated for the educational leadership which has guided your students to these accomplishments. As a guest judge you are to be congratulated for the contribution you have made to the forensic community which has inspired the confidence of your colleagues.

An undertaking of the scope of the National Debate Tournament clearly requires a cooperative effort of a great many people. The American Forensic Association is grateful to each of these persons. A few individuals deserve the special thanks of the forensic community. Among those to whom we are particularly indebted for the success of the 1971 National Debate Tournament are Professor George C. Schell, Chairman of the Board of Trustees of the NDT; Professor E.R. Tame, Chairman of the National Debate Tournament Committee; Professor John C. Lehman, Tournament Director of the NDT; Professor Jack Rhodes, our host; and the various District Committee Chairmen. The committees and staffs of these individuals have rendered yeoman service. The AFA also wishes to thank The University of Utah for its generous commitment of facilities and financial resources to the NDT.

The National Debate Tournament enjoys a heritage of excellence. This tradition was begun at the United States Military Academy in 1947 and continued for twenty years at West Point. The American Forensic Association assumed responsibility for the NDT in 1967 and has sponsored each of the last five tournaments. I welcome each of you who are student debaters to this heritage and to this tradition. Good luck!

Sincerely,


John K. Boaz, President
American Forensic Association

| | | |
|--------------|-----------------------|-----------------------------|
| | PRESIDENT | |
| JOHN BOAZ | | Illinois State University |
| | VICE PRESIDENT | |
| ROBERT BOREN | | University of Montana |
| | SECRETARY | |
| DAN MILLAR | | Central Michigan University |
| | TREASURER | |
| TED WALWIK | | Indiana State University |

| | | |
|-----------------|-------------------------|-----------------------------|
| | NATIONAL COUNCIL | |
| JERRY ANDERSON | | Central Michigan University |
| LARRY AUGUSTINE | | Susquehanna University |
| GIFFORD BLYTON | | University of Kentucky |
| WILLIAM BOYD | | Winnetka, Illinois |
| MERWYN HAYES | | Wake Forest University |
| DONUS ROBERTS | | Watertown, South Dakota |

Sponsored by the American Forensic Association

NATIONAL DEBATE TOURNAMENT: 1972

The Twenty-Sixth National Debate Tournament is sponsored by the American Forensic Association. District and National Committees have expended much time and effort to insure that this tournament reflects the highest quality debating throughout the nation.

Eight of the participants qualified this year by winning or debating in the final rounds of specially designated tournaments. Eight more teams were selected at - large by the National Debate Tournament Committee on the basis of outstanding records prior to the District Tournament. Twenty - seven additional teams representing all sections of the country were invited on the basis of their superior debating in District Tournaments. Ten additional teams were selected by the National Committee on the basis of their season record. The speech fraternity of Delta Sigma Rho-Tau Kappa Alpha contributed its outstanding team to bring the tournament roster to a total of 54 teams.

Guest judges, recommended by their District Committees and selected by the tournament director, will join coach judges accompanying their teams, to staff three-man judging panels in each round. The criticism and evaluation thus afforded should reflect the best balance and highest standards possible.

The first round will be matched by a pre-set schematic based upon the order in which teams qualified for the tournament. All other rounds will be paired on the basis of like records. Any team may be paired against any other team, and any judge may hear any team except his own. On the basis of records in the eight preliminary rounds, the top sixteen teams will be selected by win-loss record, total ballots, and total adjusted speaker points for elimination round competition culminating in the selection of the national championship debate team.

The National Debate Tournament and the American Forensic Association are grateful to Sigurd S. Larmon for donating the rotating Larmon trophy, emblematic of the national debate championship, and to Mr. and Mrs. George Walker for donating the rotating second-place Walker Memorial Trophy.

Finally, we are most grateful to Jack Rhodes our tournament host, for his cooperation and assistance in making the numerous arrangements necessary for this tournament. We are extremely indebted to President Alfred C. Emery and Dean A.A. Cave of the University of Utah for substantial support of this tournament. Without these friends of debating, the Twenty - Sixth National Debate Tournament could not have taken place.

Tournament Director, 1972 NDT:

John C. Lehman, Kansas State Teachers College

Tournament Host:

Jack Rhodes, University of Utah

Tournament Administration:

Daniel T. Hayes

Daniel T. Hayes, Kansas State Teachers College

Merwyn Hayes, Waker

Merwyn Hayes, Wake Forest University

Ray Menendez, Kansas State Teachers College

Kay Royse, Kansas State Teachers College

Lee Thompson, Staff of U.S. Senator James Pearson

National Debate Tournament Committee for 1972:

E.R. Tame, Eastern Illinois University, Chairman and
Representative of District V

Patricia B. Long, UCLA, District I

B. Wayne Callaway, University of Wyoming, District II

Vernon R. McGuire, Texas Tech University, District III

James F. Weaver, Iowa State University, District IV

Glenn Pelham, Emory University, District VI

Philip W. Warken, U.S. Naval Academy, District VII

Wilburn L. Sims, University of New Hampshire, District VIII

Herbert L. James, Dartmouth College, AFA Eastern Representative

Donn W. Parson, University of Kansas, AFA Midwestern
Representative

Annabel Hagood, University of Alabama, AFA Southern
Representative

Lucy M. Keele, California State College at Fullerton,
AFA Western Representative

John C. Lehman, Kansas State Teachers College, Tournament
Director

Jack Rhodes, University of Utah Tournament Host(ex officio)

John K. Boaz, Illinois State University, AFA President
(ex officio)

Robert R. Boren, Boise State College, AFA Public Relations
Chairman (ex officio)

Board of Trustees of the National Debate Tournament:

George Schell, Loyola University of Los Angeles, Chairman

Annabel Hagood, University of Alabama

Herbert L. James, Dartmouth College

Stan Rives, Illinois State University

Paul J. Dovre, Concordia College

DISTRICT COMMITTEES FOR 1972

District I

Arizona, California, Hawaii, Nevada, and Utah

District Committee:

Patricia B. Long, UCLA, Chairman
Kathy Corey, University of California at Santa Barbara
John DeBross, University of Southern California
Mike Dues, Sacramento State College
Lucy Keele, California State College at Fullerton
George Schell, Loyola University at Los Angeles
Paul Winters, University of the Pacific

District II

Idaho, Montana, Oregon, Washington, and Wyoming

District Committee:

B. Wayne Callaway, University of Wyoming, Chairman
George Austin, Lewis and Clark College
Sister M.M. Conway, Gonzaga University
Larry Hannah, Eastern Montana State College
Larry Richardson, Western Washington State College
Marion Rossi, Oregon College of Education

District III

Arkansas, Louisiana, Mississippi, New Mexico, Oklahoma, and Texas

District Committee:

Vernon R. McGuire, Texas Tech University, Chairman
Mary Alice Baker, Lamar University
Douglas Duke, Central (Oklahoma) State University
James Luck, Texas Christian University
C.W. Mangrum, Southeastern (Oklahoma) State College
Lee Polk, Baylor University
John Schunk, University of Texas

District IV

Colorado, Iowa, Kansas, Minnesota, Missouri, Nebraska, North
Dakota, South Dakota, and Wisconsin

District Committee:

James F. Weaver, Iowa State University, Chairman
Bernard Brock, University of Minnesota
Harold Cook, University of Missouri at Kansas City
Robert Kemp, University of Iowa
Joe McAdoo, Drury College
Donn Parson, University of Kansas
Holt Spicer, Southwest Missouri State College

District V

Illinois, Indiana, Michigan, and Ohio

District Committee:

E.R. Tame, Eastern Illinois University, Chairman
Elaine Bruggemeier, Loyola University of Chicago
Dan Bozik, Augustana College
Larry Larmer, Oberlin College
M. Jack Parker, Northern Illinois University
Robert B. Watson, Bowling Green University
George Ziegelmueller, Wayne State University

District VI

Alabama, Florida, Georgia, Kentucky, North Carolina, South Carolina, and Tennessee

District Committee:

Glenn Pelham, Emory University, Chairman
Brad Bishop, Stanford University, Vice Chairman
Jim Brooks, Middle Tennessee State University
Chester Gibson, West Georgia College
Norma Cook, University of Tennessee
Bob Pruett, University of Georgia

District VII

Delaware, District of Columbia, Maryland, New Jersey, Pennsylvania, Virginia, and West Virginia

District Committee:

H. James Godwin, Rutgers University, Chairman
Philip W. Warke, NDT representative, U.S. Naval Academy
Robert E. Connelly, King's College
Patrick H. Micken, College of William and Mary
Suzanne Snyder, Fairmont (West Virginia) State College
Edward F. Warner, University of Scranton

District VIII

Connecticut, Maine, Massachusetts, New Hampshire, New York, Rhode Island, and Vermont

District Committee:

Wilburn L. Sims, University of New Hampshire, Chairman
Herbert L. James, Dartmouth College
Allan Lichtman, Harvard University
John A. Lynch, St. Anselm's College
Ronald Matlon, University of Massachusetts
Daniel Rohrer, Boston College
John Riley, Cornell University

OFFICIAL SCHEDULE NATIONAL DEBATE TOURNAMENT, 1972

| | | |
|---------------------------|--|--|
| Friday, April 14, 1972: | 1:00 to 5:00 PM | Tournament Registration, Mezzanine, Hotel Utah |
| | 5:45 PM | First Shift of Buses Leaves Hotel Utah for Campus |
| | 6:15 PM | Second Shift of Buses Leaves Hotel Utah for Campus |
| | 6:10 to 7:00 PM | Serving Lines open for Dinner, Ballif Hall Cafeteria, University of Utah |
| | 7:45 PM | Orientation Session, Auditorium, University Union |
| | 8:30 to Midnight | Reception for Coaches and Judges, Hidden Valley Country Club |
| Saturday, April 15, 1972: | 7:15 AM | First Shift of Buses Leaves Hotel Utah For Campus |
| | 7:45 AM | Second Shift of Buses Leaves Hotel Utah For Campus |
| | 7:30 to 8:30 AM | Serving Lines open for Breakfast, Ballif Hall Cafeteria |
| | 9:00 AM | Round I of Debate |
| | 11:30 AM | Round II of Debate |
| | 1:00 to 1:30 PM | Serving Lines open for Lunch, Ballif Hall Cafeteria |
| | 2:30 PM | Round III of Debate |
| | 5:00 PM | Round IV of Debate |
| 6:30 to 7:15 PM | Serving Lines open for Dinner, Ballif Hall Cafeteria | |
| Sunday, April 16, 1972: | 7:15 AM | First Shift of Buses Leaves Hotel Utah for Campus |
| | 7:45 AM | Second Shift of Buses Leaves Hotel Utah for Campus |
| | 7:30 to 8:15 AM | Serving Lines open for Breakfast, Ballif Hall Cafeteria |
| | 9:00 AM | Round Five of Debate |
| | 12 noon | Round Six of Debate |
| | 2:00 to 2:30 PM | Serving Lines open for Lunch, Ballif Hall Cafeteria |
| | 3:30 PM | Round Seven of Debate |
| | 6:00 PM | Round Eight of Debate |
| 7:30 to 8:30 PM | Social Hour, Panorama East Room, Union Building | |
| 8:30 PM | Tournament Awards Banquet, Panorama Room, Union | |
| Monday, April 17, 1972: | 7:15 AM | First Shift of Buses Leaves Hotel Utah for Campus |
| | 7:45 AM | Second Shift of Buses Leaves Hotel Utah for Campus |
| | 7:30 to 8:30 AM | Serving Lines open for Breakfast, Ballif Hall Cafeteria |
| | 8:30 AM | Assembly of Qualifying Teams, Auditorium, Union |
| | 9:00 AM | Octafinal Round of Debate |
| | 11:00 AM | Quarterfinal Round of Debate |
| | 12:30 to 1:30 PM | Serving Lines open for Lunch, Ballif Hall Cafeteria |
| | 2:00 PM | Semifinal Round of Debate |
| 4:00 PM | Final Round of Debate, Auditorium, Union | |

XXVI NATIONAL DEBATE TOURNAMENT

Univ. Southern Calif.
"X" (Aff.)

Oberlin College
(Neg.)

George Washington
(Aff.)

UCLA "X"
(Neg.)

Canisius
(Neg.)

Georgetown
(Aff.)

Univ. Southern Calif.
"O" (Aff.)

CSC — Fullerton
(Neg.)

Michigan
(Aff.)

Northwestern "O"
(Neg.)

Emory "O"
(Neg.)

Brown University
(Aff.)

Wyoming
(Neg.)

Northwestern "X"
(Aff.)

UC Santa Barbara
(Aff.)

Kansas
(Neg.)

Univ. Southern Calif.
"X"
(5-0) (Aff.)

UCLA
(3-2) (Neg.)

Georgetown
(3-2) (Neg.)

Univ. Southern Calif.
"O"
(4-1) (Aff.)

Michigan
(4-1) (Neg.)

Brown
(3-2) (Aff.)

Northwestern "X"
(5-0) (Aff.)

UC Santa Barbara
(4-1) (Neg.)

Univ. Southern
Calif. "X"
(3-2) (Neg.)

Univ. Southern
Calif. "O"
(3-2) (Aff.)

Brown
(4-1) (Aff.)

UC Santa Barbara
(4-1) (Neg.)

Univ. Southern
Calif. "X"
(5-0) (Neg.)

Univ. Calif.
Santa Barbara
(4-3) (Aff.)

UC Santa Barbara
(4-1) (Aff.)



Fernandez and Clough in consultation during final round.



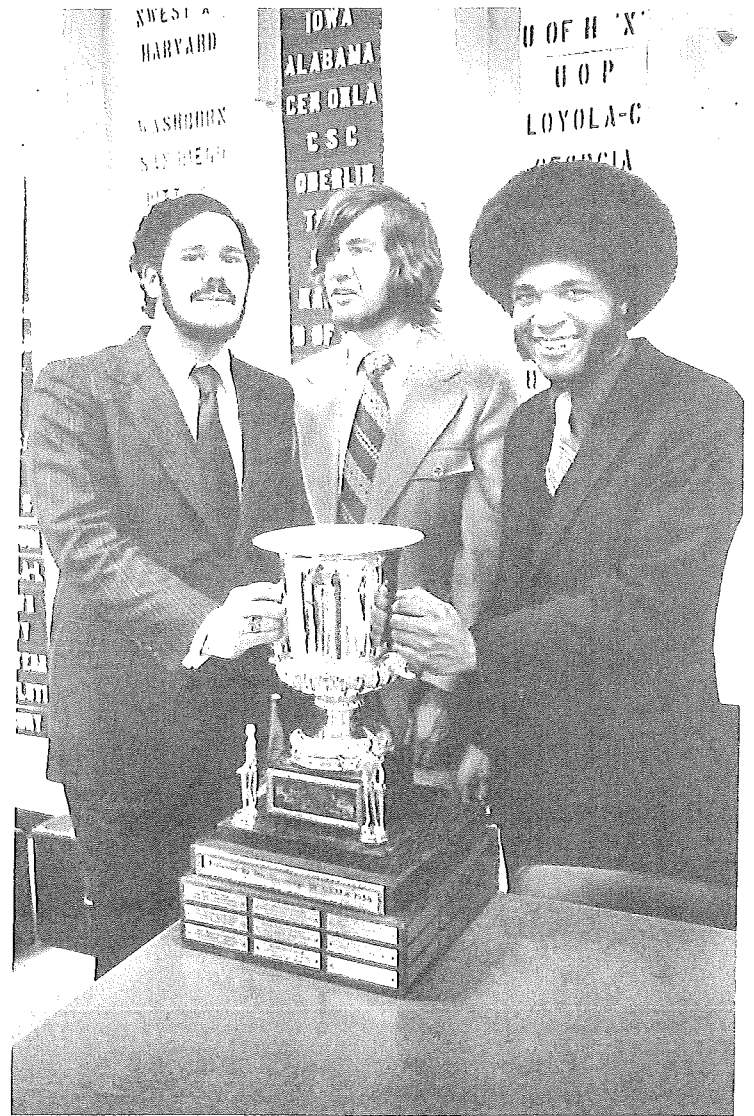
Ron Palmieri, U.S.C.



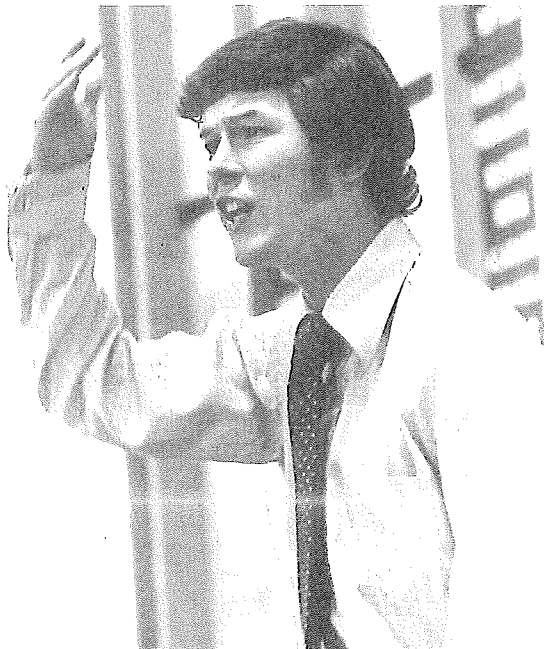
Mike Clough, U.C.S.B.



L to R: Mike Clough; Kathy Corey, Coach; Mike Fernandez — University of California at Santa Barbara — Pictured with the Sigurd S. Larmon Trophy designating first place at the 1972 N.D.T.



L to R: Ron Palmieri; John DeBross, Coach; Dennis Winston — University of Southern California — Pictured with the George W. P. Walker trophy as runners-up in the 1972 N.D.T.



Mike Fernandez, U.C.S.B.



Dennis Winston, U.S.C.

TWENTY-SIXTH (1972) N.D.T. TOP TEAMS AND SPEAKER RECORDS

| Top Teams | | | | Team |
|-----------|-------------------|------|---------|---------|
| Rank | Team | Wins | Ballots | Points* |
| 1 | USC "X" | 7 | 18 | 955 |
| 2 | Santa Barbara | 7 | 17 | 944 |
| 3 | Emory "O" | 6 | 18 | 913 |
| 4 | Canisius | 6 | 17 | 969 |
| 5 | USC "O" | 6 | 15 | 951 |
| 6 | Michigan | 6 | 15 | 884 |
| 7 | Wyoming | 6 | 15 | 882 |
| 8 | George Washington | 6 | 14 | 935 |
| 9 | UCLA "X" | 5 | 15 | 969 |
| 10 | Northwestern "X" | 5 | 15 | 915 |
| 11 | Northwestern "O" | 5 | 15 | 905 |
| 12 | Fullerton | 5 | 15 | 899 |
| 13 | Georgetown | 5 | 14 | 910 |
| 14 | Brown | 5 | 14 | 860 |
| 15 | Kansas | 5 | 13 | 930 |
| 16 | Oberlin | 5 | 13 | 900 |

(*Adjusted by dropping high and low round).

Top Speakers

| Rank | Name | School | Points* |
|------|-------------------|-------------------|-----------------|
| 1 | Terry McKnight | Canisius | 612 |
| 2 | Ron Palmieri | USC "X" | 599 (546) |
| 3 | Mike Fernandez | Santa Barbara | 599 (545) (491) |
| 4 | Joe Loveland | North Carolina | 599 (545) (490) |
| 5 | Barrett McInerney | UCLA "X" | 594 |
| 6 | Joe McGuire | North Carolina | 593 |
| 7 | Don Hornstein | UCLA "X" | 592 |
| 8 | Mary Alice McKeen | George Washington | 583 |
| 9 | Geoff Goodman | USC "O" | 582 (529) |
| 10 | King Schofield | USC "O" | 582 (528) |

(*Adjusted by dropping high and low).

INSTRUCTIONS ON HOUSING AND MEALS

Housing

Participants in the National Debate Tournament will be housed in the Hotel Utah. Reservations will be made by the Host, and each school will be responsible for paying its own bill. Guest judges will be given a check to cover the cost of their housing. Reservations will be made for Friday, Saturday, and Sunday evenings (April 14, 15, and 16) *only*, unless otherwise specified. Rates are figured on the assumption that guest judges and coaches will share a room.

Meals

Eight meals are included for debaters, coaches, and guest judges in the registration fee. All meals will be served in the Ballif Hall Cafeteria with the exception of the Sunday evening banquet, which will be held in The Panorama Room of the Union Building.

Special Note:

Coaches and guest judges are expected to be available for all rounds of debate through Monday noon. It is hoped, of course, particularly in the case of guest judges, that judges will remain through all elimination rounds. No tournament ballots will be released prior to the Semi-Final debate rounds.

DEBATE PROCEDURE AND INSTRUCTIONS

The American Forensic Association Form C debate ballot will be used for all debates. Judges are requested to comply with the following instructions:

1. Please be sure that the names of the competing teams, the names of the debaters, and your name as the judge appear on the ballot.
2. **Assign a speaker rating to each speaker.** This speaker rating need *not* be a total of checked items (analysis, reasoning, etc.), but should allow the following guidelines:
 - 25-30=superior
 - 19-24=excellent
 - 13-18=average
 - 7-12=fair
 - 1- 6=poor
3. **Assign a speaker ranking to each speaker.**
4. **Award a decision, clearly specifying both institutional name and side of the winning team.**
5. **Sign your ballot, immediately detach the white front sheet from the ballot, enclose it in the envelope provided, and give it to the timekeeper, who will return the sealed envelope to tournament headquarters for you.** This white sheet will be used by the tournament staff in power-matching. Please take the remaining two sheets of the ballot and record your comments and reasons for decision; you should have about forty minutes for this purpose. When finished, seal your ballot in the second envelope provided and return it to the desk at the entrance to the Union Auditorium.
6. **Do not announce any decision or reveal any decision to any person during the preliminary rounds of the tournament.**

Each round of debate begins in the Union Auditorium at the time indicated. Debate team pairings and judging assignments will be announced according to lettered stations. As soon as the name of a debate team or judge is announced, that debate team or judge should report to the lettered station. The timekeeper should have the group leave for the appropriate room and start the debate as soon as all debaters and judges are present. **Written notes on a debate are to be taken by no person other than the participating debaters and judges.** Otherwise, observers are welcome to hear any debates during the tournament.

Timekeepers have been instructed to record time elapsed between speeches as well as to enforce the standard ten minute-five minute format. Timekeepers will announce time elapsed between speeches to judges and debaters prior to the beginning of the next speech in the debate. There will be no automatic five minute break between constructive and rebuttal speeches.

The preliminary rounds of debate will be power-matched as in previous years. In general, the following criteria will govern team matchings in the eight preliminary rounds:

1. No team debates the same team twice.
2. Teams debate four affirmative and four negative rounds, but do not necessarily alternate sides from round to round.
3. Teams are matched on a win-loss record, ballots, and speaker points.

The elimination rounds of the tournament will pair teams according to the following scheme: (numbers below represent rank in preliminary rounds)

Octafinals: 1-16, 2-15, 3-14, 4-13, 5-12, 6-11, 7-10, 8-9
Quarterfinals: 1-16 vs. 8-9, of 2-15 vs. 7-10, of
3-14 vs. 6-11, and of 4-13 vs. 5-12.

Semifinals: winner of 1-

Semifinals: winner of 1-16-8-9 vs. 4-13-5-12 and of 2-15-7-10 vs. 3-14-6-11 with survivors meeting in the Finals.

In elimination round panel selection, coaches of opposing teams will be presented duplicate rosters of ten names (twelve names in the final round). *Without consultation*, each coach will indicate eight (ten in the final round) names acceptable to him as judges. From those names acceptable to both coaches, the NDT director will select the judging panel.

From the commencement of the rebuttal speeches in each elimination round until the chairman of the judging panel collects the ballots and opens the room, that room shall be closed and no one, except the coaches of the teams involved, shall be permitted to enter. The chairman of the panel will tally the ballots and announce the decision in the room.

PARTICIPANTS
TWENTY-SIXTH NATIONAL DEBATE TOURNAMENT, 1972

DISTRICT ONE:

UNIVERSITY OF CALIFORNIA
AT LOS ANGELES "X"

Coach: Patricia Long
Debaters: Barrett McInerney
Don Hornstein

UNIVERSITY OF CALIFORNIA
AT LOS ANGELES "O"

Coach: Patricia Long
Judge: Dixie Howell
Debaters: Frank Kimball
Royal Oakes

UNIVERSITY OF CALIFORNIA
AT SANTA BARBARA

Coach: Kathy Corey
Debaters: Mike Fernandez
Mike Clough

CALIFORNIA STATE COLLEGE
AT FULLERTON

Coach: Lucy Keele
Debaters: Patricia Peoples
Robert Conaway

LOYOLA UNIVERSITY OF
LOS ANGELES

Coach: George Schell
Debaters: David Shein
John Rose

UNIVERSITY OF THE PACIFIC

Coach: Paul Winters
Debaters: John Brydon
Steve Slade

SAN DIEGO STATE UNIVERSITY

Coach: Fred Sanders
Debaters: Eric Samuelson
Phillip Whelan Sharpe

SAN FERNANDO VALLEY
STATE COLLEGE

Coach: John Tagg
Debaters: Caroline Howard
Jan Glaser

UNIVERSITY OF SOUTHERN
CALIFORNIA "X"

Coach: John DeBross
Debaters: Ron Palmieri
Dennis Winston

UNIVERSITY OF SOUTHERN
CALIFORNIA "O"

Coach: John DeBross
Judge: Barbara O'Connor
Debaters: Geoff Goodman
King Schofield

UNIVERSITY OF UTAH

Coach: Jack Rhodes
Judge: Buford Crites
Debaters: Mike Weiler
Carolyn Young

UNIVERSITY OF REDLANDS

Coach: Ben Dillow
Debaters: Josh Cates
Greg Amundson

DISTRICT TWO:

GONZAGA UNIVERSITY

Coach: Sister M.M. Conway
Debaters: Mike Marx
Greg Schultz

UNIVERSITY OF WYOMING

Coach: B. Wayne Callaway
Debaters: David Burman
Mike Kleppinger

PACIFIC LUTHERAN UNIVERSITY

Coach: Richard Capp
Debaters: Jim Collins
Marvin Smith

DISTRICT THREE:

CENTRAL STATE UNIVERSITY

Coach: Douglas Duke
Debaters: Gary Hulse
Lee Sherman

NORTHEASTERN STATE COLLEGE

Coach: Valgene Littlefield
Debaters: Mike Littlefield
Howard Wagner

UNIVERSITY OF HOUSTON "X"

Coach: William B. English
Debaters: Marvin Isgur
Linda Listrom

UNIVERSITY OF TEXAS

Coach: John Schunk
Debaters: Robert Mott
Tony Nims

UNIVERSITY OF HOUSTON "O"

Coach: William B. English
Judge: John Cliff
Debaters: Gage Hunt
Bob Jones

DISTRICT FOUR:

DRURY COLLEGE

Coach: Joe McAdoo
Debaters: Edward Hill
Charles DeBerry

UNIVERSITY OF MISSOURI

Coach: Eugene Balof
Debaters: Joe Cambiano
Kelly Dude

UNIVERSITY OF IOWA

Coach: Robert Kemp
Debaters: Rich Updegraff
Dennis Johnson

SOUTHWEST MISSOURI STATE COLLEGE

Coach: Donal (SIC) Stanton
Debaters: Carson Elliff
Marcus Hurn

UNIVERSITY OF KANSAS

Coach: Donn W. Parson
Debaters: William Henseley
William Russell

WASHBURN UNIVERSITY

Coach: Robert McMurry
Debaters: Bill Davis
Bob Keeshan

DISTRICT FIVE

ILLINOIS STATE UNIVERSITY

Coach: Ted R. Jackson
Debaters: Richard Dempsey
Howard Burkholz

OBERLIN COLLEGE

Coach: Larry E. Larmer
Debaters: Sallie Birket
Paul Centolella

LOYOLA UNIVERSITY OF CHICAGO

Coach: Elaine Bruggemeier
Debaters: Michael Jirasek
Gerald Angst

OHIO UNIVERSITY

Coach: Don Rogers
Debaters: Mathew Lobas
Michael Muth

UNIVERSITY OF MICHIGAN

Coach: Steve Kempfski
Debaters: Mike Hartmann
Bill Black

UNIVERSITY OF TOLEDO

Coach: Don Terry
Debaters: Tom Fennell
Bob DeMars

NORTHWESTERN UNIVERSITY "X"

Coach: David Zarefsky
Debaters: David Brown
Ron Welsh

WAYNE STATE UNIVERSITY

Coach: George Ziegemeueller
Debaters: Christine Crimando
Ted Amsden

NORTHWESTERN UNIVERSITY "O"

Coach: David Zarefsky
Judge: David Goss
Debaters: Elliot Mincberg
Ron Marmer

DISTRICT SIX:

UNIVERSITY OF ALABAMA
Coach: Annabel Hagood
Judge: Cully Clark
Debaters: John Bertolotti
Charles Richardson

EMORY UNIVERSITY "X"
Coach: Glenn Pelham
Debaters: Lillian Correa
Michael Kidwell

EMORY UNIVERSITY "O"
Coach: Glenn Pelham
Judge Joseph Newman
Debaters: Melissa Maxcy
Bruce Albrecht

DISTRICT SEVEN:

GEORGETOWN UNIVERSITY
Coach: James J. Unger
Debaters: Thomas Devine
Jeffrey Ruch

GEORGE WASHINGTON UNIVERSITY
Coach: Mike Naylor
Debaters: Mary Alice McKeen
Jerry Ledford

UNIVERSITY OF PITTSBURGH "X"
Coach: Thomas Kane
Debaters: John Strand
Jim Kearney

UNIVERSITY OF PITTSBURGH "O"
Coach: Thomas Kane
Judge: Lydia Hasecke
Debaters: Gene Stoker
Wesley McGinnis

DISTRICT EIGHT:

BOSTON COLLEGE
Coach: Mark Arnold
Debaters: Robert Baker
Jane Osborne

BROWN UNIVERSITY
Coach: Barbara Tannenbaum
Debaters: Tuna Snider
Hotep X

CANISIUS COLLEGE
Coach: Bert Gross
Debaters: Mary Grace Diehl
Terry McKnight

UNIVERSITY OF GEORGIA
Coach: Robert Pruett
Debaters: Richard Bethea
Margaret Snyder

MIDDLE TENNESSEE STATE UNIVERSITY
Coach: Jim Brooks
Debaters: Tim Watson
Jim Forbes

UNIVERSITY OF NORTH CAROLINA
Coach: Robert Cox
Debaters: Joe Loveland
Joe McGuire

SETON HALL UNIVERSITY
Coach: David Drueding
Debaters: David Berube
Peter Casolaro

UNITED STATES NAVAL ACADEMY
Coach: David Tomlinson
Judge: Phil Warken
Debaters: Dave Hearing
Dave Stutzman

UNIVERSITY OF VIRGINIA
Coach: Laura Abernathy
Debaters: Greg Bittner
Tom Thrash

DARTMOUTH COLLEGE
Coach: Herb James
Debaters: Robert Branham
Steven Wasil

HARVARD UNIVERSITY
Coach: Alan Lichtman
Debaters: Greg Rosenbaum
Peter O'Connell

ST. ANSELM'S COLLEGE
Coach: Jack Lynch
Debaters: Alexander Matulewicz
George Olsen

TWENTY-FIFTH (1971) N.D.T. TOP TEAMS AND SPEAKER RECORDS

Top Teams

| Rank | Team | Wins | Ballots | Team Points* |
|------|-------------------------|------|---------|--------------|
| 1 | Georgia | 8 | 18 | 953 |
| 2 | Canisius | 7 | 18 | 952 |
| 3 | Southern California "O" | 6 | 17 | 944 |
| 4 | Wyoming | 6 | 16 | 917 |
| 5 | George Washington | 6 | 16 | 892 |
| 6 | Emory "X" | 6 | 14 | 905 |
| 7 | Kansas | 5 | 17 | 917 |
| 8 | North Carolina | 5 | 16 | 974 |
| 9 | Fullerton | 5 | 14 | 903 |
| 10 | Missouri | 5 | 14 | 890 |
| 11 | Oberlin | 5 | 14 | 884 |
| 12 | UCLA | 5 | 13 | 942 |
| 13 | Michigan | 5 | 13 | 924 |
| 14 | Loyola "O" | 5 | 13 | 919 |
| 15 | Loyola "X" | 5 | 13 | 906 |
| 16 | St. Anselm's | 5 | 13 | 885 |

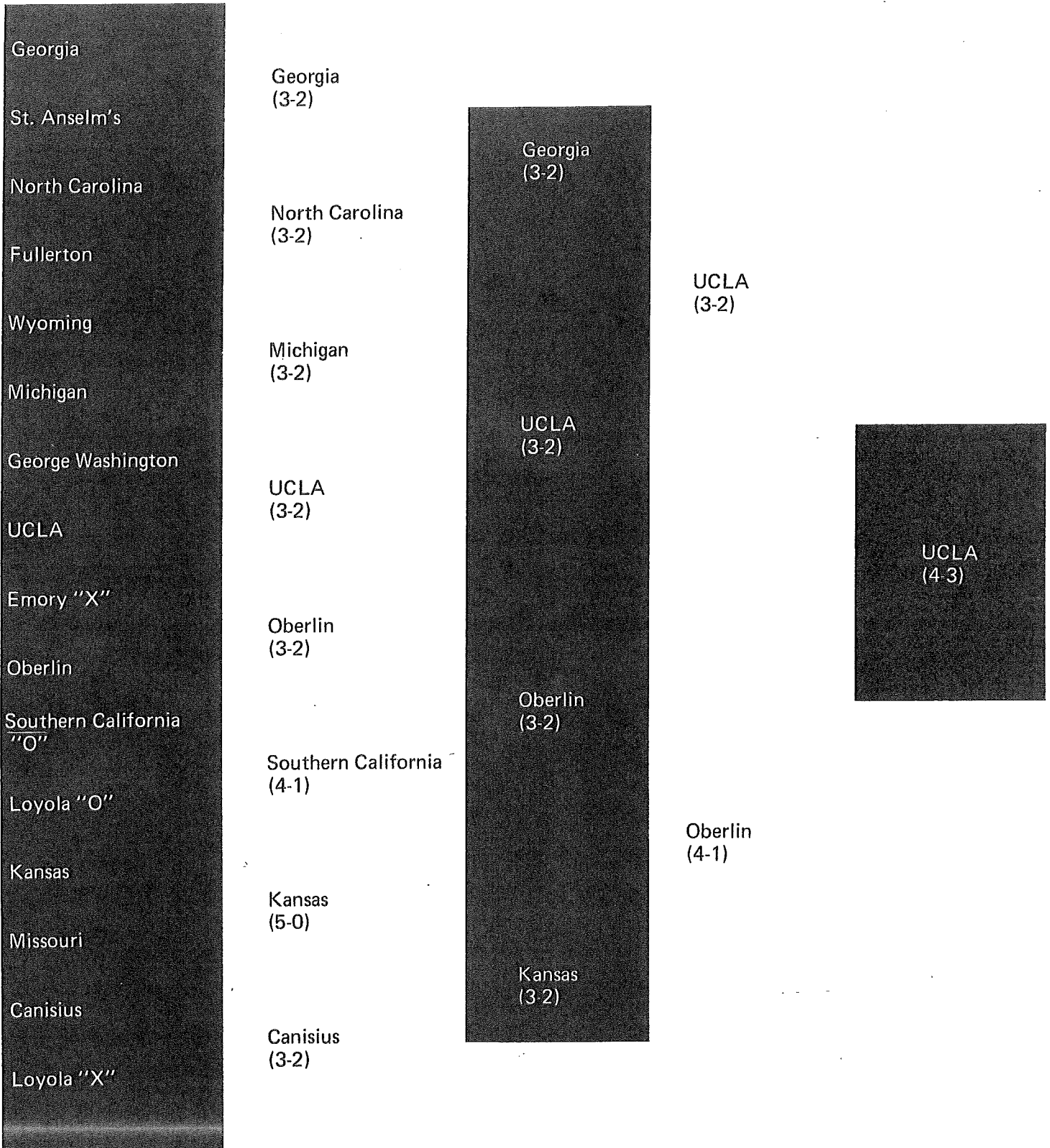
(*adjusted by dropping high and low round)

Top Speakers

| Rank | Name | School | Points* |
|------|-------------------|--------------------------------|---------|
| 1 | Joe Loveland | U of North Carolina | 605 |
| 2 | Joseph Angland | M.I.T. | 599 |
| 3 | Ron Palmieri | U Southern Cal. "O" | 592 |
| 4 | Terry McKnight | Canisius | 589 |
| 5 | Tom Martinson | U of Georgia | 586 |
| 6 | Geoff Goodman | U Southern Cal. "X" | 584 |
| 7 | Joe McGuire | U of North Carolina | 580 |
| 8 | Barrett McInerney | U.C.L.A. | 579 |
| 9 | Mike Ferdendez | U.C.-Santa Barbara | 578 |
| 10 | John Dolan | California State- Fullerton | 576 |

(*adjusted on the basis of dropping high and low ballots)

TWENTY-FIFTH (1971) N.D.T. ELIMINATION ROUNDS



N.D.T. PARTICIPANTS: THE SECOND TWENTY YEARS

Abilene Christian College – 69, 70
University of Alabama – 71, 72
Albion College (Mich.) – 67, 69
University of Arizona – 69
Arizona State University – 67
Augustana College (Ill.) – 67-68, 70
Baylor University – 67, 69, 71
Boston College – 67, 68, 69, 70, 71, 72
Bowling Green State University – 70
Bradley University – 69
Brandeis University – 67
Brown University – 69, 70, 72
Butler University (Ind.) – 67, 68
U of California at Berkeley – 68
U of California at Los Angeles – 68-69-70-71-72
U of California at Santa Barbara – 71-72
California State College at Fullerton – 70, 71, 72
Canisius College – 69, 70, 71, 72
Central Oklahoma State College – 72
College of William and Mary – 68, 69
Concordia College (Minn.) – 67, 68
Dartmouth College – 67, 68, 69, 70, 72
U of Denver – 68, 69, 70
U of Detroit – 67
Drury College – 72
Easter Illinois University – 71
Emory University – 67, 68, 69, 70, 71, 72
U of Florida – 68, 69, 70
Georgetown University – 67, 70, 71, 72
George Washington University – 68, 69, 70, 71, 72
U of Georgia – 67, 68, 69, 70, 71, 72
Gonzaga University – 72
Harvard University – 67, 68, 69, 71, 72
U of Houston – 67, 68, 69, 70, 71, 72
Illinois State U – 72
U of Iowa – 72
Iowa State U – 71
U of Kansas – 68, 69, 70, 71, 72
Kansas State College – 67
Kansas State Teachers College – 69, 70
University of Kentucky – 68
King's College – 67-68
Lewis and Clark College – 67, 71
Loyola U (Cal.) – 67, 68, 69, 70, 71, 72
Loyola U (Chicago) – 70, 72
Macalester College – 71
Marquette U – 69
MIT – 68, 69, 71
U of Miami – 68, 69
U of Mich – 71, 72
Mich State U – 68, 69
Middle Tennessee State U – 70, 72
Midwestern College (Iowa) – 69
U of Minnesota – 67
U of Missouri – 68, 71, 72
U of Missouri at Kansas City – 68
U of New Hampshire – 71
Northeastern State College (Okla.) – 67, 68, 69, 70, 72
Northwestern U – 67, 68, 69, 70, 71, 72
U of North Carolina – 71, 72
U of Northern Colorado – 71
Oberlin College – 68, 69, 70, 71, 72
Ohio University – 70, 71, 72
Ohio State U – 68, 69, 70
Oklahoma State U – 68, 69, 70
U of Oregon – 67, 68, 69
U of the Pacific – 68, 69, 71, 72
Pacific Lutheran U – 72
University of Pittsburgh – 67, 70, 71, 72
University of Redlands – 69, 72
Rutgers University – 68, 71
St. Anselm's College – 68, 69, 71, 72
St. Joseph's College (Pa.) – 67
Sacramento
San Diego
San Fernando
Seton Hall U –
U of South Carolina – 67, 68
U of South Dakota – 67, 68
U of Southern California – 67, 68, 69, 70, 71, 72
Southern Illinois U – 70
Southern Oregon College – 67
Southwest Missouri State College – 69, 70, 71, 72
Stonehill College – 67, 68
U of Texas – 71, 72
Texas Christian U – 67
Texas Technological College – 68, 70
U of Toledo – 71, 72
United States Naval Academy – 70, 72
University of Utah – 72
Wake Forest U – 70, 71
Washburn U – 72
Washington & Lee U – 68-69
Washington State U – 69, 70
Wayne State U (Mich) – 67, 68, 69, 71, 72
Western Illinois – 71
Whittier College – 71
Wichita State U – 67, 68

PAST CHAMPIONS OF THE NATIONAL DEBATE TOURNAMENT

- | | |
|--|--|
| <p>1947 Southeastern State College Debaters: W. Scott Nobles and Gerald Sanders Coach: T. A. Houston</p> <p>1948 North Texas State College Debaters: Bill Wilson and Don Clark Coach: S. B. McAlister</p> <p>1949 University of Alabama Debaters: Oscar Newton and Mitchell Latoff Coach: Annabel D. Hagood</p> <p>1950 University of Vermont Debaters: Richard O'Connell and Thomas Hayes Coach: Robert B. Huber</p> <p>1951 University of Redlands Debaters: James Wilson and Holt Spicer Coach: E. R. Nichols</p> <p>1952 University of Redlands Debaters: James Wilson and Holt Spicer Coach: E. R. Nichols</p> <p>1953 University of Miami Debaters: Gerald Kogan and Lawrence Perlmutter Coach: Donald Sprague</p> <p>1954 University of Kansas Debaters: William Arnold and Hubert Bell Coach: Kim Giffin</p> <p>1955 University of Alabama Debaters: Dennis Holt and Ellis Storey Coach: Annabel D. Hagood</p> <p>1956 United States Military Academy Debaters: George Walker and James Murphy Coach: Abbott Greenleaf</p> <p>1957 Augustana College Debaters: Norman Lefstein and Phillip Hubbard Coach: Martin Holcomb</p> <p>1958 Northwestern University Debaters: William Welsh and Richard Kirshberg Coach: Russell R. Windes</p> <p>1959 Northwestern University Debaters: William Welsh and Richard Kirshberg Coach: Russell R. Windes</p> <p>1960 Dartmouth College Debaters: Anthony Roisman and Saul Baernstein Coach: Herbert L. James</p> <p>1961 Harvard University Debaters: Laurence Tribe and Gene Clements Coach: James Kincaid</p> <p>1962 Ohio State University Debaters: Dale Williams and Sarah Benson Coach: Richard Rieke</p> <p>1963 Dartmouth College Debaters: Frank Wohl and Stephen Kessler Coach: Herbert L. James</p> <p>1964 University of the Pacific Debaters: Raoul Kennedy and Douglas Pipes Coach: Paul Winters</p> | <p>1965 Carson-Newman College Debaters: John Wittig and Barnett Pearce Coach: Forrest Conklin</p> <p>1966 Northwestern University Debaters: Bill Snyder and Mike Denger Coach: Thomas B. McClain</p> <p>1967 Dartmouth College Debaters: Tom Brewer and John Isaacson Coach: Herbert L. James</p> <p>1968 Wichita State University Debaters: Robert Shields and Lee Thompson Coach: Quincalee Striegel</p> <p>1969 Harvard University Debaters: Richard Lewis and Joel Perwin Coach: Laurence Tribe</p> <p>1970 University of Kansas Debaters: Robert McCulloh and David Jeans Coaches: Donn W. Parson and Jackson Harrell</p> <p>1971 University of California, Los Angeles Debaters: Don Hornstein and Barrett McInerney Coach: Patricia B. Long</p> |
|--|--|

PAST RUNNERS-UP OF THE NATIONAL DEBATE TOURNAMENT

- | | |
|---|--|
| <p>1947 University of Southern California Debaters: Potter Kerfott and George Grover Coach: Alan Nichols</p> <p>1948 University of Florida Debaters: Alan Weston and Gerald Gordon Coach: Wayne Eubank</p> <p>1959 Baylor University Debaters: Thomas Webband Joseph Allbritton Coach: Glenn Capp</p> <p>1950 Augustana College Debaters: Dorothy Koch and Charles Lindbergh Coach: Martin Holcomb</p> <p>1951 Kansas State Teachers College Debaters: Robert Howard and Robert Kaiser Coach: Charles Masten</p> <p>1952 Baylor University Debaters: John Claypool and Calvin Cannon Coach: Glenn Capp</p> <p>1953 College of the Holy Cross Debaters: Michael McNulty and John O'Connor Coach: Henry Murphy, S. J.</p> <p>1954 University of Florida Debaters: Robert Shevin and Larry Sands Coach: Douglas Ehninger</p> | |
|---|--|

1955 Wilkes College
Debaters: Harold Flannery and James Neveras
Coach: Arthur Kruger

1956 St. Joseph's College
Debaters: John Gough and J. Foley
Coach: Joseph Erhart, S. J.

1957 United States Military Academy
Debaters: James Murphy and George Walker
Coach: Abbott Greenleaf

1958 Harvard University
Debaters: David Bynum and James Kincaid
Coach: Robert O'Neil

1959 Wisconsin State College at Eau Claire
Debaters: James Shafer and Charles Bush
Coach: Grace Walsh

1960 San Diego State College
Debaters: John Raser and Robert Arnhym
Coach: John Ackley

1961 King's College
Debaters: Frank Harrison and Peter Smith
Coach: Robert Connelly

1962 Baylor University
Debaters: Calvin Kent and Michael Henke
Coach: Glenn Capp

1963 University of Minnesota
Debaters: Andre Zdrzil and David Krause
Coaches: Robert L. Scott and Donn W. Parson

1964 Boston College
Debaters: James Unger and Joseph McLaughlin
Coaches: John Lawton and Lee Huebner

1965 Northeastern State College
Debaters: David Johnson and Glen Strickland
Coach: Valgene Littlefield

1966 Wayne State University
Debaters: Douglas Frost and Kathleen McDonald
Coach: George Ziegelmueller

1967 Wayne State University
Debaters: Don Ritzenheim and Kathleen McDonald
Coach: George Ziegelmueller

1968 Butler University
Debaters: Donald Kiefer and Carl Flaningam
Coach: Nicholas Cripe

1969 University of Houston
Debaters: David Seikel and Michael Miller
Coach: William B. English

1970 Canisius College
Debaters: David Goss and David Wagner
Coach: Bert Gross

1971 Oberlin College
Debaters: Scott Lassar and Joe Misner
Coach: Larry E. Larmer

TOP SPEAKERS OF THE NATIONAL DEBATE TOURNAMENT: 1957-1971

1957 1st: Patricia Stallings, University of Houston
2nd: Phillip Hubbard, Augustana College (Ill.)

1958 1st: Michael Miller, University of Southern California
2nd: Phillip Hubbard, Augustana College (Ill.)

1959 1st: James Ray, United States Military Academy
2nd: Ray Nichols, University of Kansas

1960 1st: Don Herrick, William Jewell College
2nd: George Schell, Baylor University

1961 1st: George Schell, Baylor University
2nd: Laurence Tribe, Harvard University

1962 1st: Lee Huebner, Northwestern University
2nd: Harold Lawson, Kansas State Teachers College

1963 1st: Daniel Kolb, College of the Holy Cross
2nd: Robert Roberts, University of Alabama

1964 1st: Robert Roberts, University of Alabama
2nd: John Hempelmann, Georgetown University

1965 1st: Robert Shrum, Georgetown University
2nd: Douglas Pipes, University of the Pacific

1966 1st: William Snyder, Northwestern University
2nd: John Holcomb, Augustana College (Ill.)

1967 1st: Rick Flam, University of Southern California
2nd: Thomas Brewer, Dartmouth College

1968 1st: David Zarefsky, Northwestern University
2nd: Richard Brautigam, Michigan State University

1969 1st: David Seikel, University of Houston
2nd: Joel Perwin, Harvard University

1970 1st: Mike Miller, University of Houston
2nd: Jim Caforio, Loyola University – Los Angeles, and David Goss, Canisius College

1971 1st: Joe Loveland, University of North Carolina
2nd: Joseph Angland, Massachusetts Institute of Technology

