

NDT

41st Annual National Debate Tournament



**Hosted by
Illinois State University
Normal, Illinois**

March 26-30, 1987

Illinois State University
President

March, 1987

To All Participants in the 1987 National Debate Tournament:

On behalf of the faculty, staff, and students of Illinois State University, I am pleased to welcome you to our campus. We are proud to host this year's National Debate Tournament.

A well-educated person can think critically and communicate effectively. These are precisely the abilities which are promoted by intercollegiate debate. We at ISU are, therefore, pleased to give strong support to the National Debate Tournament.

It is exciting to have the nation's top debate teams here. We congratulate each of you for having earned the opportunity to participate in this unique experience, and wish you the best of luck.

Sincerely,

Lloyd Watkins
Lloyd Watkins
President

cy

NDT 1987

American Forensic Association



PRESIDENT
PATRICIA M. GANER Cypress College

VICE PRESIDENT
BILL BALTHROP University of North Carolina

SECRETARY
JAMES W. PRATT University of Wisconsin
River Falls

TREASURER
JAMES A. JOHNSON The Colorado College

NATIONAL COUNCIL
THOMAS A. HOLLIHAN University of
Southern California
KAREN KING LEE Indiana University
JOE CARDOT Abilene Christian University
CAROLYN KEEFE West Chester University
of Pennsylvania
PEG TAYLOR Orange Coast College
CRAIG BEETHAM Puyallup High School (WA)
VIRGINA O'KEEFE West Potomac High
School (VA)

February 11, 1987

To All Participants in the 1987 National Debate Tournament:

On behalf of the American Forensic Association, I extend my deepest congratulations to each of you for being selected to participate in the National Debate Tournament. Your attendance at this tournament is an outstanding accomplishment of which you should be justifiably proud. To me, the highlight of the tournament occurs in the beginning, when you are presented with your participant cups. They symbolize a year of excellence, commitment, and sacrifice, and they are awards you should treasure.

I am sure all of you would join me in thanking the people who have made this tournament possible. Special appreciation must be extended to Tournament Hosts Arnie Madsen, Robert Chandler, and Illinois State University for their hospitality; the extraordinarily capable Tournament Director David Zarefsky and his staff; Bill Henderson and the NDT Board of Trustees; Bob Gass and the NDT Committee; the members of the nine District Committees; and the Ford Motor Company Fund. Without their commitment and diligent efforts over the year, the NDT would not be the remarkable event it is.

Since the first NDT at West Point in 1947, we have had our own "Long Grey Line," people who have used the analytical skills they developed and honed through the debate activity for the betterment of society. It is my fondest hope that you will join them in those efforts. The important trophies are still out there to be won.

Best wishes,

Patricia M. Ganer
Patricia M. Ganer



Leo J. Brennan, Jr.
Executive Director

Ford Motor Company Fund
The American Road
P.O. Box 1899
Dearborn, Michigan 48121-1899
March 2, 1987

To All Participants in the 1987 National Debate Tournament:

Once again, Ford Motor Company Fund is honored and privileged to co-sponsor the National Debate Tournament, and I extend best wishes and congratulations to all participants. Your presence at this Tournament reflects the many achievements you have already accomplished, and we are pleased to be associated with you in this outstanding event.

With every best wish for continued success in the years ahead, I am

Sincerely,

Leo J. Brennan, Jr.

Welcome!

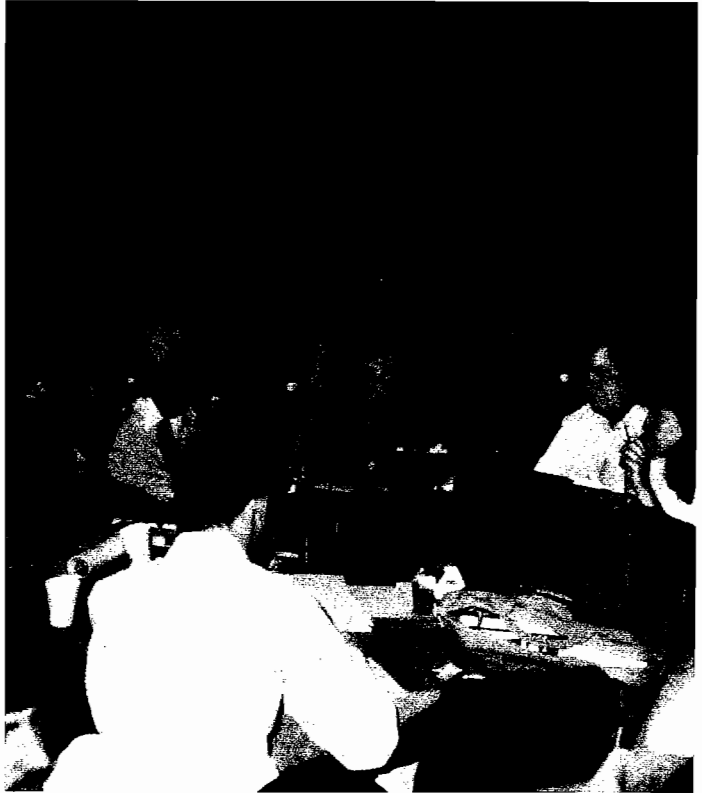
The National Debate Tournament 1987

The National Debate Tournament began at the United States Military Academy in 1947. The NDT was organized and run by the Academy, at West Point, for its first twenty years. In the early years of the tournament, the rules were determined by West Point administration in consultation with such debate coaches as A. Craig Baird of the University of Iowa, G.M. Musgrave of Des Moines, Alan Nichols of the University of Southern California, E.R. Nichols of the University of Redlands, and Joseph O'Brien of Pennsylvania State University.

At the first tournament in 1947, twenty-nine colleges participated in five "seeding" rounds and four elimination rounds over a three day period. Some of the features of the tournament were that no school would meet a school within five hundred miles of itself during the seeding rounds and that no coach would judge a school from his or her own district. Many traditions were started at West Point that year, some of which still remain today: the "big board," oral announcement of round pairings, cadet escorts for each team, teams for each debate meeting under the banner of the affirmative team, and team signs in the rooms.

In 1967, the National Debate Tournament entered a new era as the American Forensic Association, the national professional organization of forensics educators, assumed responsibility for the tournament. The NDT was moved from West Point and has been hosted by a different school every year since. Control of the tournament became the responsibility of a national committee elected by those schools supporting the tournament. As debate has developed in recent years, other refinements have been added to the tournament, including the cross-examination format, formulas for allocating bids to the tournament, the ten-minute rule, elaborate procedures for assigning judges, judging qualifications, and published critiques of the final debate.

Over the years, the tournament has expanded in size, with various procedures used for selecting the



Between Rounds

participants. In the early days, teams were chosen by district nominating committees. This method later was replaced by some form of qualifying tournament in most districts. For the first twenty years of the NDT, the tournament host and previous year's winner received automatic invitations. Post-district at-large bids were initiated in 1968 and pre-district bids in 1971. Beginning in 1970, it has been possible for a school to qualify as many as two teams for the NDT. In the early 1970's certain large tournaments were designated as national qualifiers, but today we rely on a combination of district tournaments and at-large bids. This year, for the first time, seventy-four teams will participate in the NDT.

The forty-first National Debate Tournament is sponsored by the American Forensic Association with support from the Ford Motor Company Fund. District

Resolved:

That one or more presently existing restrictions on First Amendment freedoms of speech and/or press established in one or more federal court decisions should be curtailed or prohibited.

41st NATIONAL TOURNAMENT — MARCH 26-30, 1987 ILLINOIS STATE UNIVERSITY, NORMAL, ILLINOIS

and national committees have expended much time and effort to insure that the tournament reflects the highest quality debating throughout the nation.

Sixteen teams were selected at-large by the National Debate Tournament Committee on the basis of outstanding records prior to the District tournaments. Forty-nine teams representing the nine Districts were invited on the basis of their superior debating in District tournaments. Nine additional teams were selected by the National Committee on an at-large basis after the District Tournaments.

Guest judges, recommended by their District committees and selected by the tournament director, join coach-judges accompanying the debate teams to staff three-person judging panels. In the first two preliminary rounds, judges are assigned according to the discretion of the tournament director. Within specific constraints, judges are assigned to a particular debate on the basis of random selection. In rounds three through eight, and in the elimination rounds, judge panels are constituted on the basis of the mutual preferences of the teams involved in the given debate. These standards are designed to provide the best balance and highest quality criticism and evaluation of debate rounds.

The first round is matched on a pre-set schedule based upon the order in which teams qualified for the tournament, with schools from the same district not meeting. All other odd-numbered rounds are paired on the basis of direct power (high records meeting high records). All even-numbered rounds are paired high-low within records. Any team can be paired against any other school in the preliminary rounds, and against any other team in the elimination rounds.

All teams with preliminary round records of 6-2 or better, and all teams with 5-3 records and 13 or more ballots, will participate in the elimination rounds. Seeding is determined by win-loss records, total ballots, and adjusted speaker points. The first elimination round will feature a partial bracket so that sixteen teams will remain after its conclusion. Four subsequent elimination rounds will culminate in the selection of one team as the national champion of collegiate debate. Awards are given to the outstanding individual speakers after the eight rounds of preliminary competition. Ten speakers are recognized on the basis of adjusted speaker points, with highs and lows being dropped up to four times.

One key element of the National Debate Tournament has been the support of past participants and

community leaders. The early contributions of the United States Military Academy are exemplified by George Walker, for whom the permanent second-place trophy is named. Walker was an excellent debater for West Point who won the NDT in 1956 and placed second in 1957. The support of business and professional people is typified by Sigurd S. Larmon, Dartmouth '14, for whom the permanent first-place trophy is named. In recent years financial grants from the Ford Motor Company Fund have made it possible for the tournament to prosper. Their support is recognized in the Ford Fund watches for the final round participants.

Perhaps the most important aspect of the National Debate Tournament through the years has been the people associated with it. Key people in many fields and professions have received communicative and argumentative training from debate, have displayed these skills in the National Debate Tournament, and remember the NDT as a significant event in their lives.



Stevenson Hall

Officials

DIRECTOR:

David Zarefsky,
Northwestern University

HOST

Arnie Madsen,
Illinois State University

HOST COMMITTEE

Robert C. Chandler,
Illinois State University

Craig W. Cutbirth,
Illinois State University

Douglas K. Jennings,
Illinois State University

John Knight,
Illinois State University

Katie Malito,
Illinois State University

Jan Moreland,
Illinois State University

**Coaches and Members of the
ISU forensic Union**

ADMINISTRATION

Jean DeHart,
Clemson University

Michelle Howard,
Northwestern University

Patricia L. Linder,
University of Georgia

Kathryn Olson,
University of Cincinnati

Lance Rosenzweig,
Capel Court Pacific, Inc., Los Angeles

Paul Slappey,
University of Iowa

Walter Ulrich,
Vanderbilt University

TOURNAMENT COMMITTEE

Robert H. Gass, Jr.,
California State University at Fullerton,
AFA Western Representative, Chair

Neil Phillips,
University of Northern Iowa, District IV,
Secretary

William Slagle,
Mercer University, District VI,
Parliamentarian

Jay Busse,
Loyola Marymount University, District I

Darrell Scott,
Gonzaga University, District II

Robert C. Rowland,
Baylor University, District III

David Pelham,
Central Michigan University, District IV

Walter Ulrich,
Vanderbilt University, District VI

Bro. Edward Grinder,
St. Vincent College, District VII

Dallas Perkins,
Harvard University, District VIII

Kenneth M. Strange,
Dartmouth College, District VIII

Gregg Walker,
University of Utah, District IX

Warren Decker,
George Mason University,
AFA Eastern Representative

George Ziegelmueller,
Wayne State University, AFA Midwestern
Representative

John Gossett,
North Texas State University,
AFA Southern Representative

Clark Olson,
Arizona State University,
AFA Western Representative (substitute)

David Zarefsky,
Northwestern University,
Tournament Director

Patricia M. Ganer,
Cypress College, AFA President (ex-officio)

Bill Henderson,
University of Northern Iowa, Chair,
NDT Board of Trustees (ex-officio)

Michael Bartanen,
Pacific Lutheran University, Chair,
AFA Educational Practices Committee
(ex-officio)

Arnie Madsen,
Illinois State University, Tournament Host
(ex-officio)

BOARD OF TRUSTEES

Bill Henderson,
University of Northern Iowa, Chair (1989)

James A. Johnson,
The Colorado College, Treasurer (1988)

Lucy M. Keele,
California State University at Fullerton (1991)

Jack Rhodes,
Miami University (1990)

James J. Unger,
Georgetown University (1987)

District Committees

DISTRICT I

Jay Busse, Loyola Marymount University, Chair
Kevin Baaske, California State University,
Los Angeles
Don Brownlee, California State University,
Northridge
Steven Combs, Claremont-McKenna College
Patricia M. Ganer, Cypress College
Thomas A. Hollihan, University of Southern
California

DISTRICT II

Darrell W. Scott, Gonzaga University, Chair
Michael Bartanen, Pacific Lutheran University
Dave Frank, University of Oregon
Steve Hunt, Lewis & Clark College
Larry Richardson, Western Washington
University

DISTRICT III

Robert C. Rowland, Baylor University, Chair
Douglas Duke, Central State University, Oklahoma
Amy Fugate, Johnson County Community College
Rey Garcia, Southwest Texas State University
John Gossett, North Texas State University
Donn Parson, University of Kansas
Marty Sadler, Houston Baptist University

DISTRICT IV

Neil Phillips, University of Northern Iowa, Chair
John Bart, Augustana College
Chuck Brody, Gustavus Adolphus College
Jack Kay, University of Nebraska
Dick Lesicko, Macalester College
Andy Rist, University of South Dakota
Fred Sternhagen, Concordia College

DISTRICT V

David Pelham, Central Michigan University, Chair
Charles Kauffman, Northwestern University
Steve Mancuso, University of Michigan
Jack Rhodes, Miami University
David Snowball, Augustana College
Ted Urban, Henry Ford Community College
George Ziegelmueller, Wayne State University

DISTRICT VI

Bill Slagle, Mercer University, Co-chair
Walter Ulrich, Vanderbilt University, Co-chair
Bill Balthrop, University of North Carolina
Richard Edwards, Georgia State University
Allan Loudon, Wake Forest University
J. W. Patterson, University of Kentucky
James Sizemore, West Georgia College
Melissa Wade, Emory University

DISTRICT VII

Phillip Warken, United States Naval Academy,
Chair
Warren Decker, George Mason University
Edward Grinder, O.S.B., St. Vincent College
Roger Soenksen, James Madison University
Edward Warner, University of Scranton

DISTRICT VIII

Ken Strange, Dartmouth College, Co-chair
Dallas Perkins, Harvard University, Co-chair
Glen Graham, Bates College
Ed Harris, Suffolk University
Dale Herbeck, Boston College
Alfred C. Snider, University of Vermont
Shane Stafford, Pace University
Joe Willmore, University of Massachusetts

DISTRICT IX

Gregg Walker, University of Utah, Chair
Clark Olson, Arizona State University
B. Wayne Callaway, University of Wyoming
Duane Fish, Northwest Community College
James A. Johnson, The Colorado College
Sharon Porter, Northern Arizona University

1987 NDT Schedule

THURSDAY, MARCH 26

- 1:00-5:00 Registration, Sheraton Inn
7:00 Public Debate and Commentary, Bone Student Center Ballroom
8:30 Opening Assembly, Bone Student Center Ballroom
10:30 Reception for Coaches and Judges, Best Western University Inn

FRIDAY, MARCH 27

- 8:45 Continental Breakfast, Bone Student Center Ballroom
9:15 Announcement of Round I
10:00 Round I
2:00 Announcement of Round II
2:30 Round II
5:15 District V Buffet Dinner, Bone Student Center Ballroom
6:30 Announcement of Round III
7:00 Round III
9:30 Reception for Students, Best Western University Inn
9:30 Reception for Coaches and Judges, Best Western University Inn

SATURDAY, MARCH 28

- 8:00 Continental Breakfast, Bone Student Center Ballroom
8:30 Announcement of Round IV
9:00 Round IV
1:00 Announcement of Round V
1:30 Round V
3:30 AFA President's Reception, Prairie Room, Bone Student Center
5:30 Announcement of Round VI
6:00 Round VI
10:00 Reception for Students, Best Western University Inn
10:00 Reception for Coaches and Judges, Best Western University Inn



Preparation Time, 1986



Appeals Subcommittee Hears Protest

**41st NATIONAL TOURNAMENT — MARCH 26-30, 1987
ILLINOIS STATE UNIVERSITY, NORMAL, ILLINOIS**



Filing Evidence

SUNDAY, MARCH 29

- 7:30 Continental Breakfast, Bone Student Center Ballroom
- 8:00 Announcement of Round VII
- 8:30 Round VII
- 12:45 Announcement of Round VIII
- 1:15 Round VIII
- 5:15 Announcement of First Elimination Round
- 6:00 First Elimination Round
- 7:00 No-host Cocktail Hour, Bone Student Center Ballroom
- 8:30 Tournament Banquet, Bone Student Center Ballroom

MONDAY, MARCH 30

- 8:00 Drawing of Octafinal Judges, Circus Room, Bone Student Center
- 8:15 Announcement of Octafinal Pairings, Bone Student Center Ballroom
- 8:45 Octafinal Rounds
- 12:00 Announcement of Quarterfinal Pairings, Bone Student Center Ballroom
- 12:30 Quarterfinal Rounds
- 3:30 Announcement of Semifinal Pairings, Bone Student Center Ballroom
- 4:00 Semifinal Rounds
- 7:00 Announcement of Final Pairings, Bone Student Center Ballroom
- 7:30 Final Debate, Bone Student Center Ballroom

Participating Teams and Coaches

DISTRICT I

Claremont College

David Herrick
Julie Spellman
Coach: Steven C. Combs

California State University, Fullerton "A"

Jon Brusckhe
Chris Henderson
Coaches: Robert H. Gass, Edward A. Hinck, and Brent Brossman

California State University, Fullerton "B"

Mike Buff
Tammy Shedroff
Coaches: Robert H. Gass, Edward A. Hinck, and Brent Brossman

Loyola Marymount University "A"

Lyn Coyne
Madison Laird
Coaches: Jay Busse and Barbara Busse

Loyola Marymount University "B"

Peter Ferguson
Peter Graham
Coaches: Jay Busse and Barbara Busse

University of Redlands

Jeff LaFave
Jeff Leon
Coach: William Southworth

University of Southern California "A"

David Damus
Eric Richardson
Coaches: Tom Hollihan and Randy Lake

University of Southern California "B"

Alan Lawhead
Cary Stamp
Coaches: Tom Hollihan and Randy Lake

DISTRICT II

Gonzaga University "A"

Lyndon Abel
Deborah Williams
Coach: Darrell Scott

Gonzaga University "B"

Brian McGinn
Randall Tomsen
Coach: Darrell Scott

DISTRICT III

Baylor University "A"

Lyn Robbins
Griffin Vincent
Coaches: Robert Rowland, David B. Hingstman, Cary Voss,
Bob Gilmore, and Mark Dyer

Baylor University "B"

David Giardina
Martin Loeber
Coaches: Robert Rowland, David B. Hingstman,
Cary Voss, Bob Gilmore, and Mark Dyer

Central State University "A"

Drew Duke
Martin Glendenning
Coach: Douglas Duke

Central State University "B"

Tammy Fleming
Craig Tomlin
Coach: Douglas Duke

Houston Baptist University "A"

Gus Ramsey
Spencer Zuzolo
Coach: Martin R. Sadler

Houston Baptist University "B"

Clinton Brown
Mike Long
Coach: Martin R. Sadler

University of Kansas "A"

John Culver
George Lopez
Coaches: Donn W. Parson, Tom Burkholder, and Bruce Daniel

University of Kansas "B"

Steve Ellis
Barry Pickens
Coaches: Donn W. Parson, Joan Archer, and Jeff Hobbs

North Texas State University "A"

Will Helixon
Jeffrey Rutledge
Coaches: John Gossett and Susan Stanfield

North Texas State University "B"

Kirk Crutcher
Todd Hollenshead
Coaches: John Gossett and Susan Stanfield

Odessa College

Brooks Haynie
Dianne King
Coach: Don Nichols

Southern Methodist University

Brian Hall
Shannon Smithy
Coach: Joel Rollins

University of Texas, Austin

Larry Reynolds
Thadeaus Swiderski
Coaches: Karla Leeper and Scott Segal

Texas A&M University

Lisa Carlson
Nicole White
Coach: Nick Backus

Washburn University

Michael K. Moore
David M. Zin
Coaches: David L. Boman and Steve Schechter

DISTRICT IV

Augustana College

Greg Abbott
Phil Voight
Coach: John Bart

Concordia College

Joe Schmitt
Courtney Ward
Coaches: Fred Sternhagen and John Burtis

University of Iowa

Shawn Shearer
Kirk Smith
Coaches: John Lyne, Bill Jacobs, David O'Conner,
and Paul Slappey

**41st NATIONAL TOURNAMENT — MARCH 26-30, 1987
ILLINOIS STATE UNIVERSITY, NORMAL, ILLINOIS**

Macalester College

Michele Jackson

Tim Pramas

Coaches: Dick Lesicko, John Jackson, Tim Baker,
and W. Scott Nobles

University of Nebraska, Lincoln

John Fritch

Bradley Walker

Coaches: Jack Kay and Matt Sobnosky

University of Northern Iowa "A"

Keith Dotseth

Todd Syverson

Coaches: Bill Henderson and Neil Phillips

University of Northern Iowa "B"

Aaron Hawbaker

Ken Schuler

Coaches: Bill Henderson and Neil Phillips

DISTRICT V

Augustana College

Troy Neubauer

Christopher Townsend

Coaches: David Snowball and Steve Anderson

Miami University

Frank LaSalle

Noell Tin

Coach: Jack Rhodes

University of Michigan "A"

Denise Loshbough

Jim Speta

Coaches: Steve Mancuso and Peter Hammer

University of Michigan "B"

Michael Green

Andrew Schrank

Coaches: Steve Mancuso and Peter Hammer

Northwestern University "A"

Julie Arthur

Ben Attias

Coaches: Charles Kauffman, Cori Dauber,
Eric Gander, and Scott Deatherage

Northwestern University "B"

Gordon Mitchell

Catherine Helen Palczewski

Coaches: Charles Kauffman, Cori Dauber,
Eric Gander, and Scott Deatherage

Ohio State University

Tom Geiger

Rich Schoenstein

Coaches: Mark Wayda and Marie Dzuris

Wayne State University "A"

Scott Thomson

Michael Warren

Coaches: George Ziegelmueller, Kelly Burns,
Ben Bierman, and Jon-Pierre Frenza

Wayne State University "B"

Dean Groulx

Shannon Richey

Coaches: George Ziegelmueller, Kelly Burns,
Ben Bierman, and Jon-Pierre Frenza

DISTRICT VI

Emory University "A"

Frank Lowrey

Holly Raider

Coaches: Melissa Wade, Bill Newnam, Judy Butler,
Bill Russell, Jim Greenwood, and Michael Weiss

Emory University "B"

Drew Dowell

Kevin Hudson

Coaches: Melissa Wade, Bill Newnam, Judy Butler,
Bill Russell, Jim Greenwood, and Michael Weiss

University of Kentucky

Scott Hodges

Eric Kupferberg

Coaches: J.W. Patterson and Roger Solt

University of Louisville "A"

Mike Greco

Russ Rogers

Coaches: Scott Harris and Shelley Clubb

University of Louisville "B"

Ted Bixby

John Delicath

Coaches: Scott Harris and Shelley Clubb

Mercer University

Ron Light

Stuart Teague

Coaches: Bill Slagle and Lee Fitzpatrick

Samford University

Lisa Iulianelli

Jon Jordan

Coaches: Skip Coulter and Keith Herron

Wake Forest University "A"

Mark Bailey

Gloria Cabada

Coaches: Allan Loudon and Ross Smith

Wake Forest University "B"

Alan Coverstone

Judd Kimball

Coaches: Allan Loudon and Ross Smith

West Georgia College "A"

Alfred Evans

James Sizemore

Coaches: Chester Gibson and Michael Bryant

West Georgia College "B"

Dee Ann Butler

Kevin Wangerin

Coaches: Chester Gibson and Michael Bryant

DISTRICT VII

George Mason University "A"

Leonard Bennett

Tom Sotelo

Coaches: Warren D. Decker, David L. Steinberg, Dane Butswinkas,
Jeff Parcher, and Kambie Johnston

George Mason University "B"

Ronald Bratt

Beth Butswinkas

Coaches: Warren D. Decker, David L. Steinberg, Dane Butswinkas,
Jeff Parcher, and Kambie Johnston

Participating Teams and Coaches

Georgetown University "A"

Casey Anderson
Stuart Rabin
Coach: David Cheshier

Georgetown University "B"

John Garcia
Craig Silvertooth
Coach: David Cheshier

James Madison University

M. Jeff Euchler
J. Robert Russell
Coaches: Roger A. Soenksen and Cecilia Graves

United States Naval Academy "A"

James Hagler
James Reining
Coaches: Phil Warken and Cdr. Al Cipriani

United States Naval Academy "B"

Ted Dempsey
Pierre Kennedy
Coaches: Phil Warken and Cdr. Al Cipriani

University of Pennsylvania

Alfreda Bikowsky
Bruce Edward Lang
Coach: Jenny Steinen

University of Pittsburgh

Carl Craver
Pat Kingsley
Coaches: Star Muir, Ed Panetta, and Nick Burnett

DISTRICT VIII

Bates College

Chris Janak
Peter Klamka
Coaches: Bob Branham and Glenn Graham

Boston College

Chris Gassett
Mike Janas
Coaches: Dale Herbeck and John Katsulas

Dartmouth College "A"

Craig Budner
Chrissy Mahoney
Coaches: Herb James, Ken Strange, David Rhaesa,
and Erik Jaffe

Dartmouth College "B"

Shaun Martin
Rob Wick
Coaches: Herb James, Ken Strange, David Rhaesa,
and Erik Jaffe

Harvard University "A"

Marc Goldman
Charlie Synn
Coaches: Dallas Perkins and Sherry Hall

Harvard University "B"

David Coale
Matthew Schnall
Coaches: Dallas Perkins, David Glass, and Sherry Hall

University of Massachusetts

Mark Friedman
Stacey Kinnamon
Coach: Joe Willmore

Pace University

Amanda Grant
Charles Gray
Coaches: Shane Stafford, Jerry Goldberg, Judy Goldberg,
and Frank Colbourn

DISTRICT IX

Arizona State University

Alexander B. Ching
Ronald Messerly
Coaches: Clark Olson and Vince Meldrum

Northern Arizona University

Gerald Burns
Paula Phillips
Coaches: Sharon Porter and David Riek

University of Utah

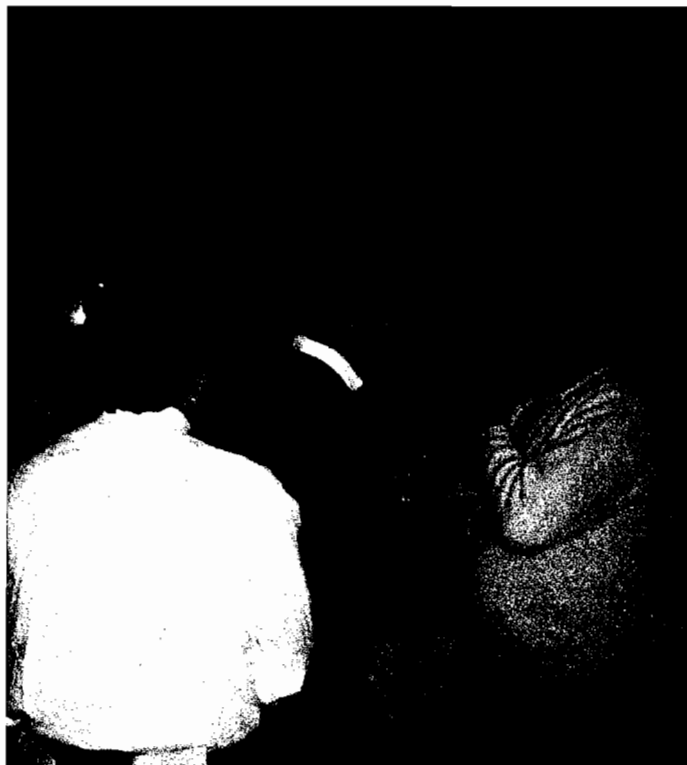
Peter Bsumek
Todd Gabler
Coaches: Gregg Walker, Chris McMahon, Bill Cue,
Byron Benevento, and Rick Rodrick

Weber State College "A"

Howard Allan
Brett Lilly
Coaches: Pierre Heidrich, Lynn Bearden, and Susan Malone

Weber State College "B"

Tony Justman
Jimmy Summers
Coaches: Pierre Heidrich, Susan Malone, and Lynn Bearden



Four Ballots In, One Remaining

1986 National Debate Tournament Results

Top Speakers

1. Lyn Robbins	Baylor A	624	568	512
2. Scott Segal	Emory A	624	568	511
3. Danny Povinelli	Massachusetts	623		
4. Peter Hammer	Gonzaga A	617		
5. Jeremy Ofseyer	North Carolina	616		
6. Mark Dyer	Baylor A	614		
7. Erik Jaffe	Dartmouth A	613		
8. Ouita Papka	Kentucky A	612		
9. Keith Herron	Samford	610		
10. Bill Russell	Emory B	609	554	

Qualifying Teams

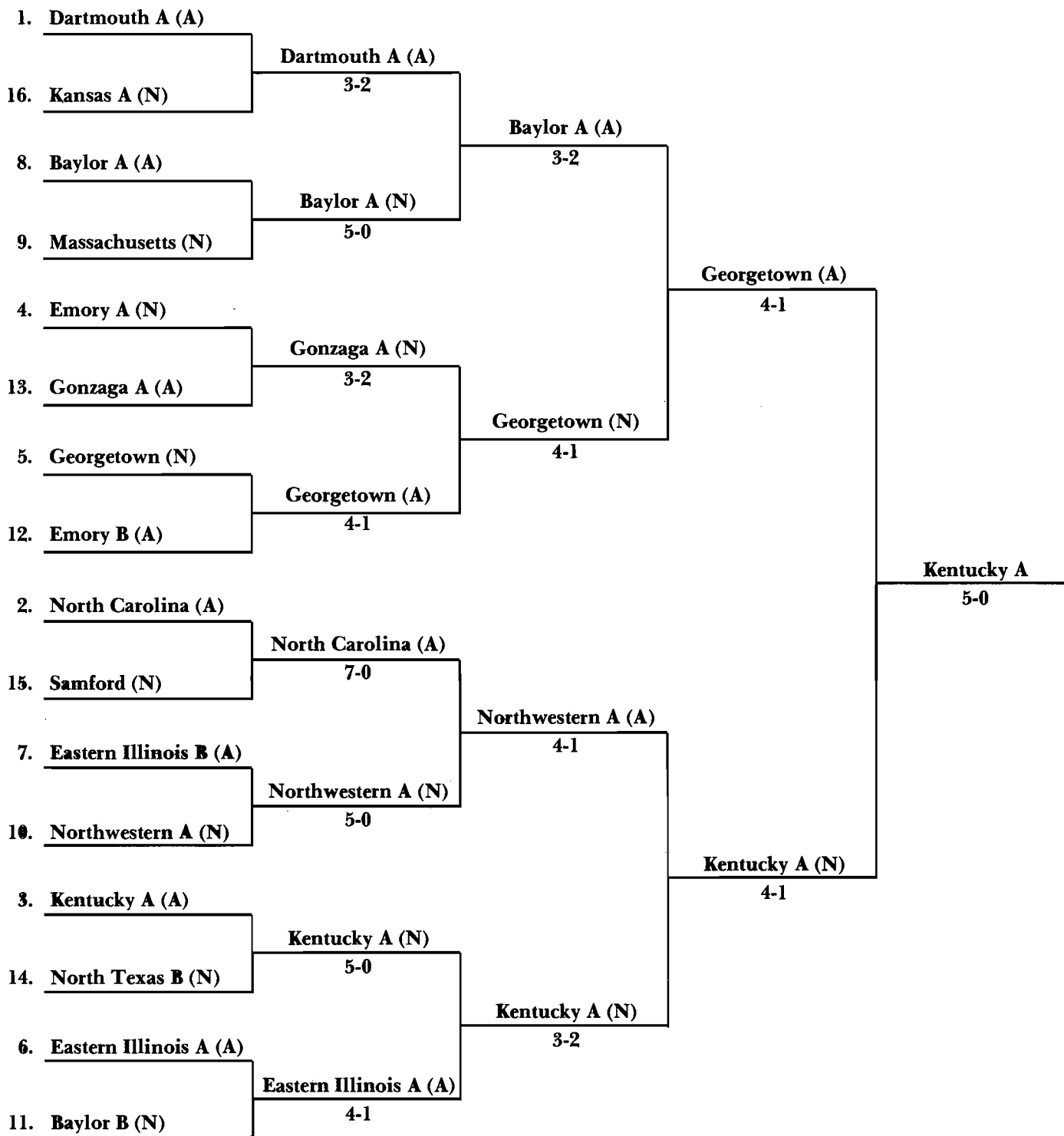
1. Dartmouth A	Jaffe-Mahoney	7-1	21	1219	
2. North Carolina	Egues-Ofseyer	7-1	18	1210	
3. Kentucky A	Brownell-Papka	7-1	15	1209	
4. Emory A	Segal-Weiss	6-2	18	1216	
5. Georgetown	Mazarr-Rabin	6-2	17	1203	
6. Eastern Illinois A	Frenza-Lucas	6-2	17	1201	
7. Eastern Illinois B	Deem-Hintz	6-2	17	1189	
8. Baylor A	Dyer-Robbins	6-2	16	1238	
9. Massachusetts	Friedman-Povinelli	6-2	16	1230	
10. Northwestern A	Lynn-Palczewski	6-2	16	1206	
11. Baylor B	Giardina-Vincent	6-2	14	1197	
12. Emory B	Russell-Salterio	5-3	17	1194	
13. Gonzaga A	Gilmore-Hammer	5-3	16	1222	
14. North Texas B	Caligur-Woods	5-3	16	1200	1092
15. Samford	Boozer-Herron	5-3	16	1200	1090
16. Kansas A	Culver-Lopez	5-3	16	1197	



1986 NDT Champions

David Zarefsky Presents Larmon Trophy to Kentucky Coaches J.W. Patterson and Roger Solt, Debaters David Brownell and Ouita Papka; Elizabeth Leigh Patterson (left) Approves Results

1986 Elimination Round Results



Tournament Results, 1947-1986

YEAR	CHAMPIONS	RUNNERS-UP
1947	Southeastern State College W. Scott Nobles and Gerald Sanders Coach: T.A. Houston	University of Southern California Potter Kerfott and George Grover Coach: Alan Nichols
1948	North Texas State College Keith Parks and David Cotton Coach: S.B. McAlister	University of Florida Alan Weston and Gerald Gordon Coach: Wayne Eubank
1949	University of Alabama Oscar Newton and Mitchell Latoff Coach: Annabel D. Hagood	Baylor University Thomas Webb and Joseph Allbritton Coach: Glenn Capp
1950	University of Vermont Richard O'Connell and Thomas Hayes Coach: Robert B. Huber	Augustana College Dorothy Koch and Charles Lindberg Coach: Martin Holcomb
1951	University of Redlands James Wilson and Holt Spicer Coach: E.R. Nichols	Kansas State Teachers College Robert Howard and Robert Kaiser Coach: Charles Master
1952	University of Redlands James Wilson and Holt Spicer Coach: E.R. Nichols	Baylor University John Claypool and Calvin Cannon Coach: Glenn Capp
1953	University of Miami Gerald Kogan and Lawrence Perlmutter Coach: Donald Sprague	College of the Holy Cross Michael McNulty and John O'Connor Coach: Henry J. Murphy, S.J.
1954	University of Kansas William Arnold and Hubert Bell Coach: Kim Giffin	University of Florida Robert Shevin and Larry Sands Coach: Douglas Ehninger
1955	University of Alabama Dennis Holt and Ellis Storey Coach: Anabel D. Hagood	Wilkes College Harold Flannery and James Neveras Coach: Arthur Kruger
1956	United States Military Academy George Walker and James Murphy Coach: Abbott Greenleaf	Saint Joseph's College John Gough and J. Foley Coach: Joseph Erhart, S.J.
1957	Augustana College Norman Lefstein and Phillip Hubbard Coach: Martin Holcomb	United States Military Academy James Murphy and George Walker Coach: Abbott Greenleaf
1958	Northwestern University William Welsh and Richard Kirshberg Coach: Russell R. Windes	Harvard University David Bynum and James Kincaid Coach: Robert O'Neill
1959	Northwestern University William Welsh and Richard Kirshberg Coach: Russell R. Windes	Wisconsin State University at Eau Claire James Shafer and Charles Bush Coach: Grace Walsh
1960	Darthmouth College Anthony Roisman and Saul Baernstein Coach: Herbert L. James	San Diego State College John Raser and Robert Arnhyrn Coach: John Ackley
1961	Harvard University Laurence Tribe and Gene Clements Coach: James Kincaid	King's College Frank Harrison and Peter Smith Coach: Robert Connelley
1962	Ohio State University Dale Williams and Sarah Benson Coach: Richard Rieke	Baylor University Calvin Kent and Michael Henke Coach: Glenn Capp

Tournament Results, 1947-1986

YEAR	CHAMPIONS	RUNNERS-UP
1963	Dartmouth College Frank Wohl and Stephen Kessler Coach: Herbert L. James	University of Minnesota Andre Zdrazil and David Krause Coaches: Robert L. Scott and Donn W. Parson
1964	University of the Pacific Raoul Kennedy and Douglas Pipes Coach: Paul Winters	Boston College James J. Unger and Joseph McLaughlin Coaches: John Lawton and Lee Huebner
1965	Carson-Newman College John Wittig and Barnett Pearce Coach: Forrest Conklin	Northeastern State College David Johnson and Glen Strickland Coach: Valgene Littlefield
1966	Northwestern University Bill Snyder and Mike Denger Coach: Thomas B. McClain	Wayne State University Douglas Frost and Kathleen McDonald Coach: George Ziegelmueller
1967	Dartmouth College Tom Brewer and John Isaacson Coach: Herbert L. James	Wayne State University Don Ritzenheim and Kathleen McDonald Coach: George Ziegelmueller
1968	Wichita State University Robert Shields and Lee Thompson Coach: Quincalee Striegel	Butler University Donald Kiefer and Carl Flaningam Coach: Nicholas Cripe
1969	Harvard University Richard Lewis and Joel Perwin Coach: Laurence Tribe	University of Houston David Seikel and Michael Miller Coach: William B. English
1970	University of Kansas Robert McCulloh and David Jeans Coaches: Donn W. Parson and Jackson Harrell	Canisius College David Goss and David Wagner Coach: Bert Goss
1971	University of California, Los Angeles Don Hornstein and Barrett McInerney Coach: Patricia B. Long	Oberlin College Scott Lassar and Joe Misner Coach: Larry E. Larmer
1972	University of California, Santa Barbara Mike Clough and Mike Fernandez Coach: Kathy Corey	University of Southern California Ron Palmieri and Dennis Winston Coach: John C. DeBross
1973	Northwestern University Elliot Minberg and Ron Marmer Coach: David Zarefsky	Georgetown University Bradley Ziff and Stewart Jay Coach: James J. Unger
1974	Harvard University Greg A. Rosenbaum and Charles E. Garvin Coach: Mark Arnold	Augustanta College Bob Feldhake and Rick Godfrey Coach: Dan Bozik
1975	Baylor University Jay Hurst and David Kent Coach: Lee Polk	University of Redlands Greg Ballard and Bill Smelko Coach: William Southworth
1976	University of Kansas Robin Rowland and Frank Cross Coaches: Donn W. Parson and Bill Bathrop	Georgetown University Charles Chafer and David Ottoson Coach: James J. Unger
1977	Georgetown University John Walker and David Ottoson Coach: James J. Unger	University of Southern California Leslie Sherman and Steven Combs Coaches: John C. DeBross and Lee Garrison
1978	Northwestern University Mark Cotham and Stuart Singer Coach: G. Thomas Goodnight	University of Southern California Steven Combs and Jon Cassanelli Coaches: John C. DeBross and Lee Garrison

NDT Participants: 1947-1987

- Abilene Christian College:** 55, 56, 57, 58, 61, 65, 69, 70
University of Alabama: 48, 49, 50, 53, 54, 55, 56, 60, 61, 63, 64, 66, 71, 73, 75, 76, 77, 78, 79
Albion College: 67, 69
American University: 61
University of Arizona: 49, 50, 69, 76, 77, 78, 79, 80, 81, 82, 83, 84, 85
Arizona State University: 47, 67, 87
University of Arkansas: 50
Auburn University: 85, 86
Augustana College (Illinois): 47, 48, 49, 50, 51, 52, 53, 54, 55, 56, 57, 58, 59, 60, 64, 66, 67, 68, 70, 71, 73, 74, 75, 76, 77, 78, 79, 80, 81, 87
Augustana College (South Dakota): 76, 77, 78, 79, 80, 81, 82, 83, 84, 85, 87
Bates College: 48, 76, 77, 78, 79, 80, 81, 82, 83, 84, 85, 86, 87
Baylor University: 48, 49, 50, 51, 52, 53, 55, 56, 60, 61, 62, 64, 67, 69, 71, 74, 75, 76, 77, 78, 79, 81, 82, 83, 84, 85, 86, 87
Boston College: 62, 63, 64, 65, 67, 68, 69, 70, 71, 72, 74, 75, 79, 87
Boston University: 60, 73, 74, 75
Bowling Green State University: 50, 51, 70, 75, 76, 78
Bradley University: 51, 69, 79
Brandeis University: 65, 67
Brigham Young University: 55, 56, 60, 62, 63, 66, 78
Brooklyn College: 61
Brown University: 69, 70, 72
Butler University: 59, 61, 67, 68, 80, 81, 83
University of California at Berkeley: 68, 77, 81
University of California at Los Angeles: 48, 54, 66, 68, 69, 70, 71, 72, 73, 74, 75, 76, 78
University of California at Santa Barbara: 64, 71, 72, 73, 75
California State University, Fullerton: 70, 71, 72, 73, 75, 76, 77, 78, 80, 83, 85, 86, 87
California State University, Los Angeles: 55, 56, 61, 66, 73, 76
California State University, Northridge: 65, 67, 68, 72, 74
California State University, Sacramento: 74, 75, 76, 77, 78, 79, 81, 82
California State University, San Diego: 49, 52, 53, 54, 55, 56, 57, 58, 59, 60, 61, 62, 63, 72
Canisius College: 69, 70, 71, 72, 73, 74, 77, 78, 79
Capital University: 48, 73, 74
Carson-Newman College: 64, 65, 66
Case Institute of Technology: 73
Catholic University: 73, 74, 75, 76, 77, 78
University of Central Florida (Florida Tech): 76, 78, 79, 80, 81, 83
Central Michigan University: 74, 76, 83, 85, 86
Central Oklahoma State University: 52, 53, 54, 56, 61, 63, 72, 73, 85, 86, 87
Champlain College: 49
University of Chicago: 48, 49
Claremont McKenna (Men's) College: 78, 79, 80, 81, 82, 83, 84, 85, 87
Coe College: 48
Colgate University: 51
Colorado College: 75, 77, 79
University of Colorado: 47, 48
Concordia College: 67, 68, 73, 87
Cornell University: 76
Dartmouth College: 48, 51, 54, 55, 56, 57, 58, 59, 60, 61, 63, 64, 65, 66, 67, 68, 69, 70, 71, 72, 73, 75, 76, 77, 78, 79, 80, 81, 82, 83, 84, 85, 86, 87
David Lipscomb College: 55
University of Denver: 54, 67, 68, 69, 70, 85
DePaul University: 48, 49, 51, 57
University of Detroit: 67
Drury College: 72, 80
Duke University: 56, 57, 58, 61
Eastern Illinois University: 71, 74, 75, 76, 77, 78, 79, 80, 81, 82, 83, 84, 85, 86
Eastern Nazarene College: 58, 60, 61
Emory University: 65, 66, 67, 68, 69, 70, 71, 72, 77, 78, 81, 82, 83, 84, 85, 86, 87
Emporia State University: 51, 53, 58, 59, 60, 61, 63, 65, 66, 69, 70, 73, 74, 76, 77, 80, 81, 82
Fairmont State College: 76, 78
University of Florida: 48, 50, 51, 52, 53, 54, 55, 56, 57, 59, 62, 68, 69, 70
Florida State University: 75
Fordham University: 57, 59, 66
Fordham University School of Education: 58, 59, 61
Fort Hays State College: 61
George Mason University: 74, 75, 80, 84, 85, 86, 87
George Pepperdine College: 49, 50, 51, 52, 53
George Washington University: 49, 51, 52, 54, 58, 59, 60, 62, 63, 64, 65, 66, 68, 69, 70, 71, 72, 73, 76, 81, 82, 83
Georgetown College: 49
Georgetown University: 49, 52, 56, 61, 62, 63, 64, 65, 66, 67, 70, 71, 72, 73, 74, 75, 76, 77, 78, 79, 80, 81, 82, 83, 84, 85, 86, 87
University of Georgia: 67, 68, 69, 70, 71, 72, 73, 74, 75, 76, 77
Georgia State University: 84, 85, 86
Gonzaga University: 47, 48, 59, 60, 62, 72, 73, 75, 76, 77, 79, 80, 81, 82, 85, 86, 87
Greenville College: 56
Harvard University: 50, 54, 55, 56, 57, 58, 59, 60, 61, 62, 63, 64, 65, 66, 67, 68, 69, 70, 71, 72, 73, 74, 75, 76, 77, 78, 79, 80, 81, 82, 83, 84, 85, 86, 87
Hiram College: 52
College of the Holy Cross: 48, 51, 52, 53, 54, 62, 63
University of Houston: 51, 53, 55, 56, 57, 58, 59, 67, 68, 69, 70, 71, 72, 73, 74, 75, 76, 77, 78, 82, 83
Houston Baptist University: 87
Howard University: 52, 54
University of Idaho: 53, 57, 61
Idaho State University: 53, 57, 61
University of Illinois, Chicago Circle: 52, 53, 54, 56, 58, 64, 65
Illinois College: 54
Illinois State University: 52, 54, 55, 62, 63, 72, 73, 81
Indiana State University: 47, 73
University of Iowa: 72, 73, 75, 77, 78, 80, 81, 83, 84, 85, 86, 87
Iowa State University: 52, 71, 74, 82, 83, 84
James Madison University: 79, 80, 81, 82, 83, 84, 86, 87
John Carroll University: 78, 80, 81
Johns Hopkins University: 77, 78, 79
University of Kansas: 48, 49, 50, 51, 52, 53, 54, 55, 56, 57, 58, 59, 60, 63, 64, 66, 68, 69, 70, 71, 72, 73, 74, 75, 76, 77, 78, 79, 80, 81, 82, 83, 84, 85, 86, 87
Kansas State College of Pittsburg: 61, 63, 67
Kansas State University: 55, 64, 75, 76, 77, 83
University of Kentucky: 60, 64, 67, 68, 73, 74, 75, 76, 77, 78, 79, 80, 81, 82, 84, 85, 86, 87
Kent State University: 51
King's College: 59, 60, 61, 63, 67, 68, 77, 83
Lewis and Clark College: 64, 66, 67, 71, 75, 76, 77, 78, 80
Louisiana College: 47, 48, 49, 53, 54
University of Louisville: 79, 80, 81, 82, 83, 84, 85, 86, 87
Loyola-Marymount University: 62, 63, 64, 65, 67, 68, 69, 70, 71, 72, 73, 74, 76, 77, 78, 80, 81, 82, 83, 84, 85, 86, 87
Loyola University (Chicago): 60, 70, 72
Luther College: 50
Macalaster College: 56, 61, 71, 73, 74, 75, 76, 77, 78, 79, 80, 81, 82, 84, 85, 86, 87
Marietta College: 59
Marquette University: 58, 69
University of Maryland: 67
University of Massachusetts: 73, 74, 75, 76, 77, 78, 79, 80, 81, 82, 83, 84, 85, 86, 87
Massachusetts Institute of Technology: 48, 49, 56, 57, 58, 62, 63, 64, 66, 68, 69, 71, 73, 74, 75, 76, 79
Mercer University: 78, 79, 80, 81, 82, 83, 84, 87
University of Miami (Florida): 52, 53, 54, 55, 57, 58, 59, 60, 61, 62, 63, 66, 68, 69, 74
Miami University (Ohio): 76, 80, 81, 87
University of Michigan: 71, 72, 76, 77, 87
Michigan State University: 53, 66, 68, 69
Middlebury College: 55
Middle Tennessee State University: 70, 72, 77
Midland College: 53
Midwestern College: 69
University of Minnesota: 62, 63, 64, 65, 66, 67, 73, 82, 83
University of Mississippi: 47, 51, 52
University of Missouri, Columbia: 68, 71, 72
University of Missouri, Kansas City: 61, 62, 66, 68
University of Montana: 49, 50, 51
Montana State University: 51, 60
Morehead State University: 77, 78, 79, 80
Mount Mercy College: 53

Nebraska State College at Kearney: 65, 66
 Nebraska Wesleyan University: 51, 52, 54, 55
 University of Nebraska, Lincoln: 80, 83, 86, 87
 University of Nebraska, Omaha: 77
 University of Nevada: 48
 University of New Hampshire: 71
 University of New Mexico: 51, 52, 54, 85
 State University of New York, College at Geneseo: 53
 Northeastern Oklahoma State University: 62, 63, 64, 65, 66, 67, 68, 69, 70, 72, 73, 81, 82, 84, 85
 Northern Arizona University: 87
 Northern Illinois University: 65
 University of Northern Michigan: 75
 North Texas State University: 48, 49, 59, 62, 63, 64, 65, 66, 79, 83, 84, 85, 86, 87
 Northwest Missouri State University: 79, 80, 82
 Northwestern College (Minnesota): 63
 Northwestern University: 47, 49, 50, 54, 55, 58, 59, 60, 62, 65, 66, 67, 68, 69, 70, 71, 72, 73, 74, 75, 76, 77, 78, 79, 80, 82, 83, 84, 85, 86, 87
 University of North Carolina: 71, 72, 73, 74, 75, 77, 80, 81, 82, 83, 84, 85, 86
 University of North Dakota: 79
 University of Northern Colorado: 71, 74, 75
 University of Northern Iowa: 74, 75, 81, 82, 83, 84, 85, 86, 87
 University of Notre Dame: 47, 48, 49, 50, 51, 52, 53, 55, 56, 57, 58, 65, 78
 Oberlin College: 68, 69, 70, 71, 72
 Occidental College: 53
 Odessa College: 81, 82, 86, 87
 Ohio University: 70, 71, 72, 74, 75, 77, 79, 82
 Ohio State University: 47, 52, 60, 61, 62, 63, 67, 68, 69, 70, 71, 86, 87
 University of Oklahoma: 57, 58, 59, 60, 61, 63, 64
 Oklahoma Baptist University: 77
 Oklahoma City University: 65
 Oklahoma State University: 68, 69, 70
 University of Oregon: 60, 61, 62, 63, 64, 65, 66, 67, 68, 69, 73, 75, 82, 84
 Oregon State University: 47, 48, 54, 63, 64
 Ottawa University: 49
 Pace University: 75, 81, 83, 84, 87
 University of the Pacific: 58, 61, 64, 65, 68, 69, 71, 72, 76
 Pacific Lutheran University: 52, 56, 62, 72, 82, 83, 84
 Pacific University: 49, 55, 56, 57, 65, 73
 University of Pennsylvania: 49, 50, 51, 54, 57, 58, 59, 60, 65, 66, 87
 Pennsylvania State University: 47, 50, 52, 55
 Phillips University: 49
 University of Pittsburgh: 53, 56, 60, 62, 64, 66, 67, 70, 71, 72, 73, 74, 75, 76, 79, 80, 81, 82, 83, 85, 86, 87
 Princeton University: 51, 53, 56, 57, 59, 61
 University of Puget Sound: 56, 57
 Purdue University: 47, 48, 50, 60, 61, 62
 University of Redlands: 50, 51, 52, 57, 58, 59, 62, 64, 65, 69, 72, 73, 74, 75, 76, 77, 79, 80, 81, 82, 83, 84, 85, 86, 87
 University of Rhode Island: 73
 Rice University: 57
 University of Richmond: 56, 62, 65, 76
 Roanoke College: 50
 Rockhurst College: 62, 64
 Rutgers University: 47, 68, 71, 73, 74
 Saint Anselm's College: 56, 59, 64, 68, 69, 71, 72
 Saint John's University: 53, 54, 62, 63, 64
 Saint Joseph's College: 55, 56, 57, 59, 67
 Saint Martin's College: 51, 53, 59
 Saint Mary's College: 49
 Saint Olaf College: 48, 49, 51, 52, 53, 57, 62, 63
 Saint Peter's College: 51, 53, 55, 57, 59, 62
 College of Saint Thomas: 47
 Samford University: 73, 74, 75, 78, 79, 80, 81, 82, 83, 84, 85, 86, 87
 University of San Francisco: 58
 San Jacinto College: 86
 San Joaquin Delta College: 80, 81
 University of Scranton: 61
 Seton Hall University: 60, 72, 73, 79, 83, 85
 Smith College: 52
 University of South Carolina: 50, 51, 54, 56, 57, 58, 59, 60, 61, 62, 63, 64, 66, 67, 68
 University of South Dakota: 67, 68, 75
 South Dakota State College: 54
 Southeast Oklahoma State University: 47, 48, 49, 50, 59, 73, 74, 76
 University of Southern California: 47, 48, 50, 51, 52, 54, 57, 58, 59, 60, 61, 63, 64, 65, 66, 67, 68, 69, 70, 71, 72, 73, 74, 75, 76, 77, 78, 79, 80, 81, 82, 83, 84, 85, 86, 87
 Southern Illinois University: 57, 58, 60, 62, 63, 70
 Southern Methodist University: 50, 52, 87
 University of Southern Mississippi: 65, 66
 Southern Oregon College: 67
 Southern Utah State College: 82, 83, 84, 85
 Southwest Missouri State University: 52, 55, 57, 59, 60, 62, 63, 65, 69, 70, 71, 72, 73, 74, 75, 77, 78
 Southwestern College: 56, 57, 78, 79, 80, 81
 University of Southwestern Louisiana: 76, 77, 78, 79
 Stanford University: 49
 Stevens Institute of Technology: 49
 Stonehill College: 67, 68
 Suffolk University: 81, 82, 83, 84
 Swarthmore College: 48
 Temple University: 49
 University of Tennessee: 50, 51, 79
 Tennessee Polytechnic Institute: 62
 University of Texas, Arlington: 77, 78, 80, 82
 University of Texas, Austin: 47, 60, 71, 72, 84, 86, 87
 Texas A & M University: 81, 82, 84, 85, 87
 Texas Christian University: 47, 48, 51, 60, 62, 66, 67, 75, 76
 Texas Technological College: 68, 70, 73
 University of the South: 49
 University of Toledo: 71, 72
 Union College and University: 55
 United States Air Force Academy: 59, 60, 76, 77, 78, 79
 United States Merchant Marine Academy: 52, 53, 59
 United States Military Academy: 47, 48, 49, 50, 51, 52, 53, 54, 55, 56, 57, 58, 59, 60, 61, 62, 63, 64, 65, 66, 77, 80
 United States Naval Academy: 47, 48, 49, 50, 58, 64, 65, 70, 72, 78, 80, 85, 87
 University of Utah: 47, 48, 50, 51, 52, 72, 73, 75, 76, 77, 78, 79, 80, 81, 82, 83, 84, 85, 86, 87
 Utica College: 50, 51
 Vanderbilt University: 76, 77, 78, 80
 University of Vermont: 47, 48, 50, 51, 53, 54, 55, 56, 57, 60, 61, 62, 64, 65, 66, 84, 85, 86
 University of Virginia: 47, 63, 67, 68, 81
 Wabash College: 55
 Wake Forest University: 47, 48, 50, 51, 52, 53, 54, 55, 56, 59, 63, 64, 70, 71, 73, 74, 75, 76, 77, 78, 80, 81, 82, 83, 84, 86, 87
 Washburn University: 56, 58, 64, 65, 66, 72, 86, 87
 Washington and Lee University: 63, 68, 69
 University of Washington: 55, 68
 Washington State University: 47, 50, 54, 58, 66, 69, 70, 76
 Wayne State University: 58, 61, 63, 64, 65, 66, 67, 68, 69, 71, 72, 73, 77, 78, 79, 80, 81, 82, 83, 84, 85, 86, 87
 Weber State College: 81, 86, 87
 Wesleyan University: 50, 52
 West Georgia College: 73, 74, 75, 76, 77, 78, 79, 80, 81, 82, 83, 84, 85, 86, 87
 West Virginia University: 55, 64, 74, 79, 81, 85, 86
 West Virginia Wesleyan College: 75, 77
 Western Illinois University: 71, 73, 80, 82, 85
 Western Michigan University: 63, 64
 Western Reserve University: 66
 Western Washington University: 74, 78, 80, 81, 83, 85, 86
 Wheaton College: 47, 59, 63
 Whitman College: 50, 51, 52, 53, 54, 55, 58, 59
 Whittier College: 71
 Wichita State University: 48, 64, 67, 68, 77, 79
 William Jewell College: 60, 61
 College of William and Mary: 56, 68, 69, 73, 74, 84
 University of Wisconsin at Eau Claire: 50, 51, 53, 54, 55, 56, 57, 58, 59, 73, 76, 78, 79
 Wilkes College: 54, 55, 57, 58
 Willamette University: 48, 49, 51, 52, 55, 58, 59, 61
 College of Wooster: 73, 79, 81, 83
 University of Wyoming: 67, 68, 70, 71, 72, 73, 74, 75, 76, 77, 78, 81, 82, 83, 84, 86
 Xavier University: 50, 53, 54, 55, 56, 57, 58, 59
 Yale University: 47, 49

41st Annual NATIONAL DEBATE TOURNAMENT

Illinois State University — Normal, Illinois
March 27-30, 1987

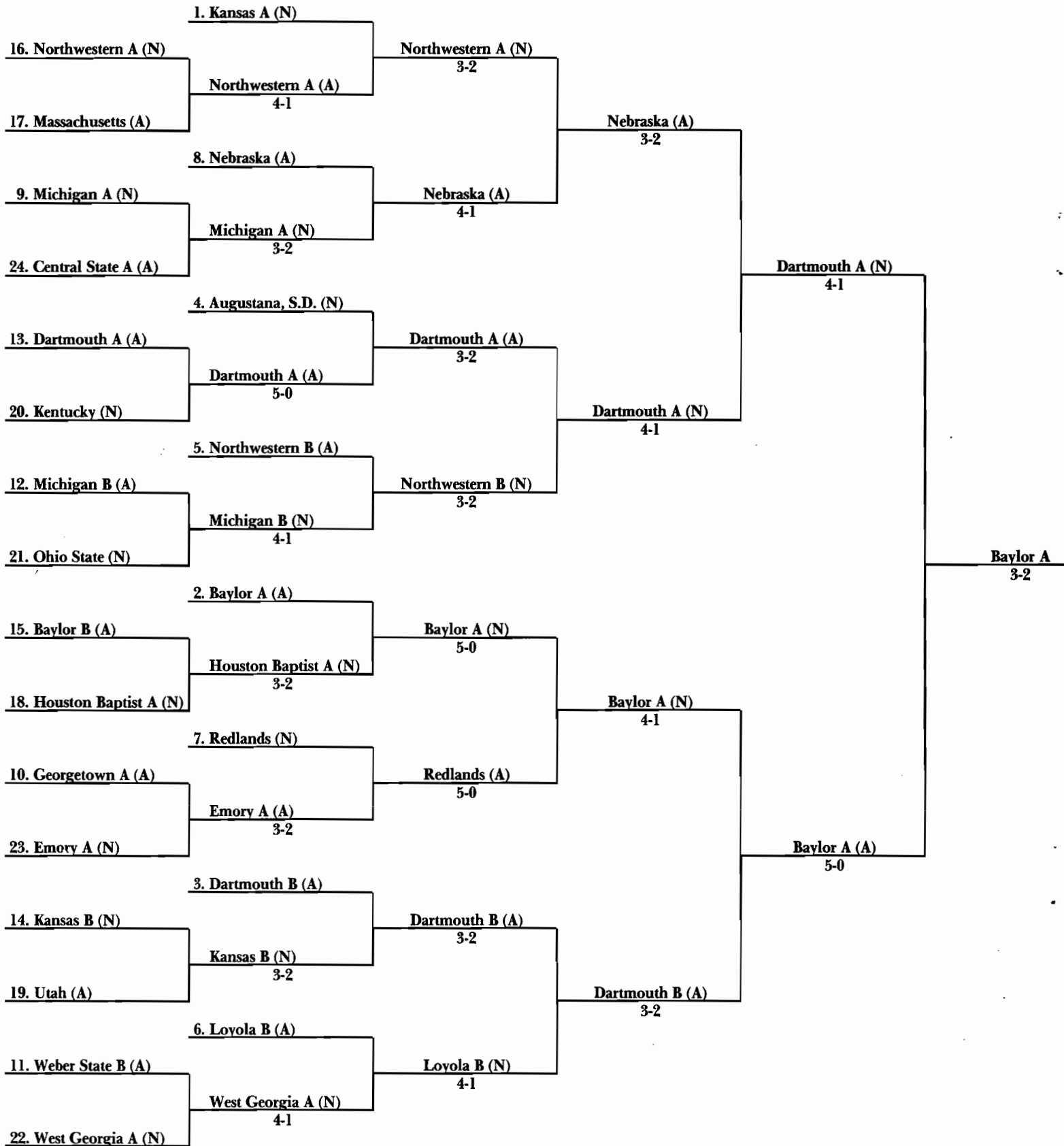
Top Speakers

1.	Lyn Robbins	Baylor A	635			
2.	John Culver	Kansas A	622			
3.	Charlie Synn	Harvard A	620			
4.	Cathie Palczewski	Northwestern B	619			
5.	Jeff Leon	Redlands	618			
6.	John Fritch	Nebraska	617			
7.	Spencer Zuzolo	Houston Baptist A	614			
8.	Shaun Martin	Dartmouth B	613	558		
9.	Craig Budner	Dartmouth A	613	557	501	446
10.	Ben Attias	Northwestern A	613	557	501	445
10.	Mark Friedman	Massachusetts	613	557	501	445

Qualifying Teams

1.	Kansas A	Culver-Lopez	8-0	22	1216
2.	Baylor A	Robbins-Vincent	7-1	22	1244
3.	Dartmouth B	Martin-Wick	7-1	18	1224
4.	Augustana (SD)	Abbott-Voight	7-1	16	1214
5.	Northwestern B	Mitchell-Palczewski	6-2	20	1225
6.	Loyola B	Ferguson-Graham	6-2	17	1202
7.	Redlands	LaFave-Leon	6-2	16	1227
8.	Michigan A	Loshbough-Speta	6-2	16	1215
9.	Nebraska	Fritch-Walker	6-2	16	1214
10.	Georgetown A	Anderson-Rabin	6-2	16	1192
11.	Weber State B	Justman-Summers	6-2	15	1190
12.	Michigan B	Green-Schrank	6-2	13	1184
13.	Dartmouth A	Budner-Mahoney	5-3	18	1222
14.	Kansas B	Ellis-Pickens	5-3	17	1207
15.	Baylor B	Giardina-Loeber	5-3	17	1204
16.	Northwestern A	Arthur-Attias	5-3	16	1220
17.	Massachusetts	Friedman-Kinnamon	5-3	16	1203
18.	Houston Baptist A	Ramsey-Zuzolo	5-3	15	1211
19.	Utah	Bsumek-Gabler	5-3	15	1190
20.	Kentucky	Hodges-Kupferberg	5-3	15	1183
21.	Ohio State	Geiger-Schoenstein	5-3	15	1175
22.	West Georgia A	Evans-Sizemore	5-3	14	1193
23.	Emory A	Lowrey-Raider	5-3	14	1181
24.	Central State A	Duke-Glendenning	5-3	14	1176

1987 Elimination Round Results



41st Annual NATIONAL DEBATE TOURNAMENT

Illinois State University — Normal, Illinois
March 27-30, 1987

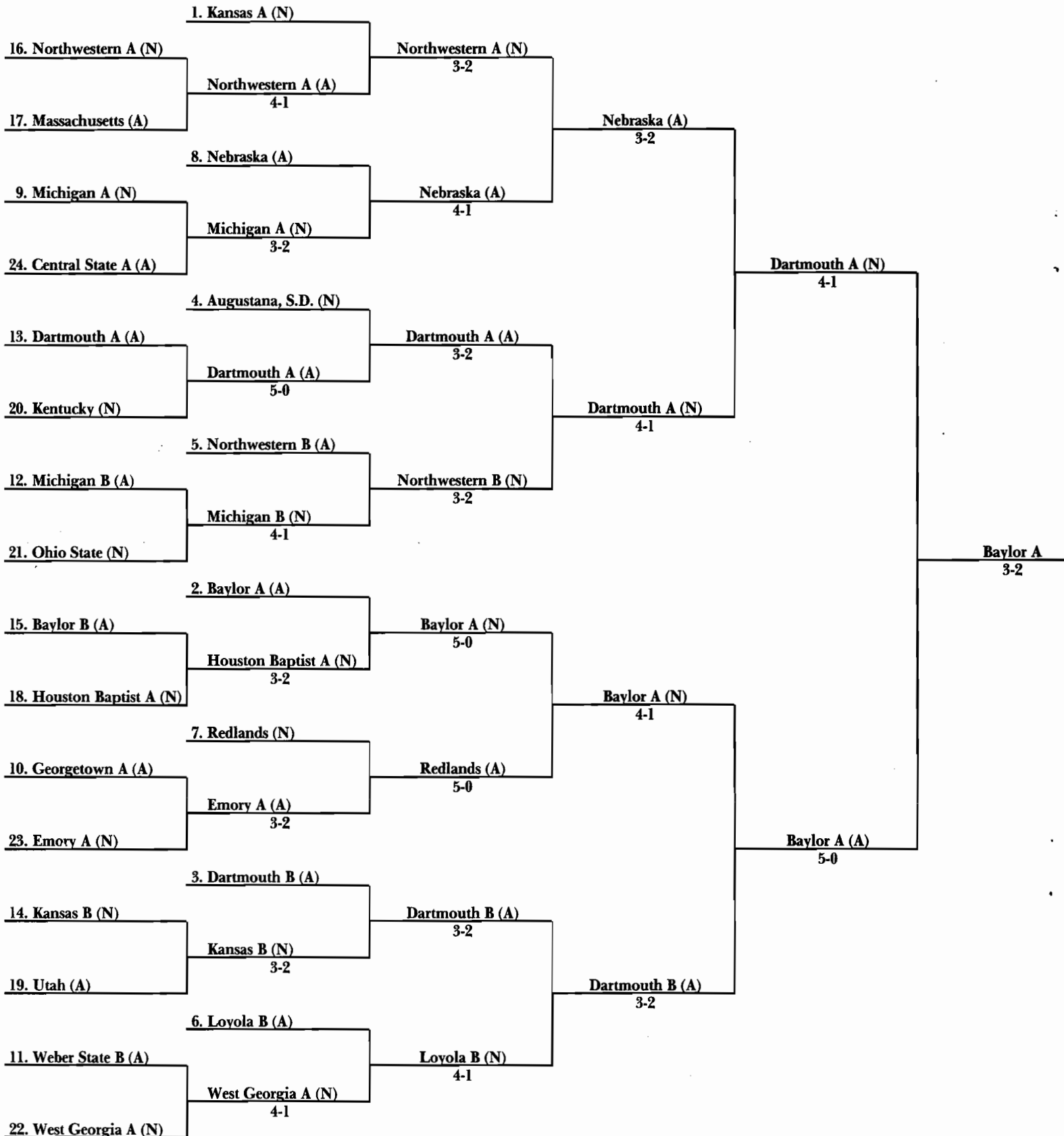
Top Speakers

1.	Lyn Robbins	Baylor A	635			
2.	John Culver	Kansas A	622			
3.	Charlie Synn	Harvard A	620			
4.	Cathie Palczewski	Northwestern B	619			
5.	Jeff Leon	Redlands	618			
6.	John Fritch	Nebraska	617			
7.	Spencer Zuzolo	Houston Baptist A	614			
8.	Shaun Martin	Dartmouth B	613	558		
9.	Craig Budner	Dartmouth A	613	557	501	446
10.	Ben Attias	Northwestern A	613	557	501	445
10.	Mark Friedman	Massachusetts	613	557	501	445

Qualifying Teams

1.	Kansas A	Culver-Lopez	8-0	22	1216
2.	Baylor A	Robbins-Vincent	7-1	22	1244
3.	Dartmouth B	Martin-Wick	7-1	18	1224
4.	Augustana (SD)	Abbott-Voight	7-1	16	1214
5.	Northwestern B	Mitchell-Palczewski	6-2	20	1225
6.	Loyola B	Ferguson-Graham	6-2	17	1202
7.	Redlands	LaFave-Leon	6-2	16	1227
8.	Michigan A	Loshbough-Speta	6-2	16	1215
9.	Nebraska	Fritch-Walker	6-2	16	1214
10.	Georgetown A	Anderson-Rabin	6-2	16	1192
11.	Weber State B	Justman-Summers	6-2	15	1190
12.	Michigan B	Green-Schrank	6-2	13	1184
13.	Dartmouth A	Budner-Mahoney	5-3	18	1222
14.	Kansas B	Ellis-Pickens	5-3	17	1207
15.	Baylor B	Giardina-Loeber	5-3	17	1204
16.	Northwestern A	Arthur-Attias	5-3	16	1220
17.	Massachusetts	Friedman-Kinnamon	5-3	16	1203
18.	Houston Baptist A	Ramsey-Zuzolo	5-3	15	1211
19.	Utah	Bsumek-Gabler	5-3	15	1190
20.	Kentucky	Hodges-Kupferberg	5-3	15	1183
21.	Ohio State	Geiger-Schoenstein	5-3	15	1175
22.	West Georgia A	Evans-Sizemore	5-3	14	1193
23.	Emory A	Lowrey-Raider	5-3	14	1181
24.	Central State A	Duke-Glendenning	5-3	14	1176

1987 Elimination Round Results



NATIONAL DEBATE TOURNAMENT

A Project of the American Forensic Association
with Support from the Ford Motor Fund



NEWSLETTER

Volume XVI, Number 2
May, 1987
Editor: David Zarefsky

I. Results of the 1987 National Debate Tournament

The 1987 National Debate Tournament was won by Lyn Robbins and Griffin Vincent of Baylor University. In the final round, they defeated Craig Budner and Chrissy Mahoney of Dartmouth College. Top Speaker in the 1987 NDT was Lyn Robbins of Baylor University (for the second consecutive year) and second speaker was John Culver of the University of Kansas.

You will find enclosed the following information about the 1987 National Debate Tournament: 1) the elimination round bracket, 2) top speakers and team rankings from the preliminary rounds, 3) the first-round and second-round at-large rankings by the NDT Committee, and 4) a copy of the tournament booklet.

II. Tournament Evaluation Forms

Participants in the 1987 NDT received a Tournament Evaluation Form. If you did not submit this form at the tournament, but wish to make comments or suggestions which might improve future NDTs, please send the Tournament Evaluation Form to David Zarefsky at the address below. Evaluation forms are tabulated each year and the results reported to the NDT Committee at its fall meeting.

III. The 1988 National Debate Tournament

The 1988 National Debate Tournament will be located at Weber State College in Ogden, Utah. Professor Randolph J. Scott, department chair at Weber State, will be the tournament host. The tournament again will be on the last weekend in March; the tentative dates are Thursday through Sunday, March 24-27.

Subscription invoices for the 1988 NDT will be mailed to you by your District Chair during August or early September. Should you have surplus funds in your budget in the current fiscal year, you may wish to pay your subscription fee in advance. If so, send a check for \$30 made payable to NATIONAL DEBATE TOURNAMENT to Al Johnson at the address below. Early payment will make reminder notices unnecessary and may save you money during the 1987-88 fiscal year.

DAVID ZAREFSKY
Director, NDT
Dept. of Communication
Studies
Northwestern University
Evanston, IL 60201

ROBERT H. GASS, JR.
Chair, NDT Committee
Dept. of Speech Communication
California State Univ., Fullerton
Fullerton, CA 92634

BILL HENDERSON
Chair, Board of Trustees
Dept. of Speech
University of Northern Iowa
Cedar Falls, IA 50614

JAMES A. JOHNSON
Treasurer, Board of
Trustees
Registrar
Colorado College
Colorado Springs, CO 80903

WILLIAM SOUTHWORTH
Director of Alumni Relations
Gannett Communication
Center
University of Redlands
Redlands, CA 92373

ARNIE MADSEN
Host, 1987 NDT
Dept. of Communication
Illinois State University
Normal, IL 61761

IV. Officers for the 1988 National Debate Tournament

Gregg Walker of the University of Utah was elected Chair of the NDT Committee for 1988. John Gossett of North Texas State University was elected Secretary and Bill Slagle of Mercer University was re-elected as Parliamentarian. Neil Phillips of the University of Northern Iowa was reappointed as secretary of the NDT ranking system.

The NDT Board of Trustees re-elected Bill Henderson of the University of Northern Iowa as Chair for 1988. Jack Rhodes of Miami University was elected Treasurer. Michael Hazen of Wake Forest University (who has been appointed to the Board for the 1987-92 term) was elected Secretary.

David Zarefsky of Northwestern University was reappointed as Director of the NDT for 1988.

V. Ranking System Report

NDT subscribers have received periodic reports of the NDT ranking system; the final report will include all tournaments through April 15. At the NDT, Ranking System Secretary Neil Phillips presented an overall report. Competition in NDT debate occurred among 108 schools, with seventy-five tournaments offering one or more divisions of NDT debate. For tournaments offering senior division, an average of 22 teams participated. For junior and novice divisions, the average numbers were 12 and 10 respectively. The average number of schools per tournament was 15.

The NDT was the fourth largest senior division tournament during 1986-87, behind Wake Forest, Northwestern, and Vanderbilt.

VI. National Committee Meetings

The NDT Committee has held two meetings since the last Newsletter -- at the Northwestern tournament in February and at Illinois State at the NDT. Here is a summary of major actions taken.

(1) Revisions in the Bid Allocation Formula. Considerable time was spent in discussion of possible modifications in the formulas for allocating bids to the Districts, based on the report of a subcommittee chaired by Neil Phillips. Problems cited with the current formulas included the belief that they are not sufficiently responsive to changes in performance or subscriptions, that they do not weight actual participation in NDT debate, and that they give undue weight to elimination round performance. Proposals ranged from abolition of the districts to ad hoc adjustment of allocations. After considerable discussion, the following three changes were made.

First, the five basic formulas will be modified to the following:

- (a) 50% performance - 35% size - 15% participation
- (b) 50% performance - 15% size - 35% participation
- (c) 50% performance - 25% size - 25% participation
- (d) 35% performance - 50% size - 15% participation
- (e) 15% performance - 50% size - 35% participation
- (f) 25% performance - 50% size - 25% participation
- (g) 35% performance - 15% size - 50% participation
- (h) 15% performance - 35% size - 50% participation
- (i) 25% performance - 25% size - 50% participation
- (j) 1/3 performance - 1/3 size - 1/3 participation

In each of these formulas, participation is defined as "the number of NDT eligible teams participating at the district tournaments plus first-round at-large bids." It will be determined in the same manner as the current "size" part of the formulas.

Second, Schedule B of the current formulas (the schedule which excludes first-round at-large teams from the computation) was eliminated. Particularly with the addition of a participation factor, it is mathematically unlikely that Schedule B will diverge from Schedule A.

Third, Section F of the performance schedule was modified to award one point for each team to reach the elimination rounds, rather than differing numbers of points based on the team's performance in the elimination rounds.

A fourth change was proposed -- the reduction in the number of first-round at-large bids to 8 and the redistribution of the other 8 to the districts. This change passed but not with a sufficient majority, so it will not go into effect.

(2) United States Debate Association. The Committee considered the creation of a body tentatively called the United States Debate Association, which would have responsibility to promote and assist policy debate throughout the year. The motive for this proposal was the belief that the NDT Committee existed primarily to oversee a single tournament and that no entity was responsible for the activity as a whole. After extensive discussion, a majority of the Committee was convinced both that the NDT Charter was broader than had been supposed and that the goals identified for the USDA could be achieved within the existing structure of the American Forensic Association. The proposal then was dropped.

A caucus of coaches of policy debate, to address many of the concerns which originally prompted the USDA proposal, will be held at the 1987 SCA convention in Boston.

(3) Date of the Tournament. A motion was passed that, beginning with the 1989 NDT, the Tournament will be held exclusively in the month of April. Dates for the district tournaments and the submission of second-round at-large bids will be adjusted each year based on the actual dates of the NDT.

(4) At-Large Application Forms. The cover sheet for at-large applications and the performance summary will henceforth distinguish senior division from junior division.

(5) Tournament Size. Although discussions have been held on various implications of the decision to increase the 1987 tournament size, a formal review and decision about the future size of the tournament will not take place until the fall.

VII. Board of Trustees Meeting

The NDT Board of Trustees met during the tournament at Illinois State. Items discussed included the current financial statement, subscriptions, awards policy, and the financial implications of the increase in tournament size.

The Board agreed to review the Responsibilities for Schools Hosting the NDT after receiving detailed statements of expenses incurred by the hosts at Dartmouth and Illinois State.

The Board also reviewed the procedures for selecting NDT sites. Currently, the Site Committee is a joint committee of the Board and the NDT Committee, but final contracts are negotiated by the Board. The Board proposed, subject to approval by the NDT Committee that the responsibility for site selection rest exclusively with the Board. This proposal was subsequently approved by the NDT Committee.

In a related move, the Board approved Miami University in Oxford, Ohio as the site for the 1989 NDT, subject to the negotiation of satisfactory contracts.

VIII. Composition of the 1988 NDT Committee

District I	Jay Busse
District II	Darrell Scott
District III	Robin Rowland
District IV	John Bart
District V	David Pelham
District VI	Bill Slagle and Walter Ulrich
District VII	Bro. Edward Grinder
District VIII	Dale Herbeck and Dallas Perkins
District IX	Gregg Walker
AFA East	Warren Decker
AFA Midwest	Charles Kauffman
AFA South	John Gossett
AFA West	Clark Olson
Director	David Zarefsky
Ex-officio	Pat Ganer, Bill Henderson, Jack Rhodes, Randy Scott

IX. Composition of the 1988 NDT Board of Trustees

Al Johnson (term expires 1988)
Bill Henderson (term expires 1989)
Jack Rhodes (term expires 1990)
Lucy Keele (term expires 1991)
Michael David Hazen (term expires 1992)

Best wishes for a good summer!

1987-ILL State

1987 NATIONAL DEBATE TOURNAMENT 1ST ROUND AT-LARGE BIDS

	I	II	III	IV	V	VI	VII	VIII	IX	FFA	MPA	SPA	WFA	SUM AFTER		FINAL
														HI-LOW	DROP	
	Busse	Scott	Rowland	Phillips	Felham	Slagle/ Ulrich	Grinder	Perkins/ Strange	Walker	Decker	Ziegelmueller	Cossett	Gass	Zarefsky		
Augustana (Voight & Abbott)	18	13	13	12	16	15	15	12	11	11	12	11	10	13	154	12
Baylor (Giardina & Loeber)	8	8	8	9	9	6	9	10	9	8	9	8	8	9	100	8
Baylor (Robbins & Vincent)	3	1	1	1	1	1	2	3	1	1	1	1	1	2	16	1
Dartmouth (Rudner & Mahoney)	5	5	4	4	4	4	1	4	5	4	7	4	7	4	54	4
Dartmouth (Martin & Wick)	4	6	6	5	5	8	5	5	4	5	4	6	4	7	62	5
Emory (Lowery & Raider)	23	21	22	22	22	23	22	23	19	22	22	23	23	22	267	23
Georgetown (Rabin & Anderson)	15	16	19	17	20	19	11	18	22	12	19	19	21	10	206	17
Harvard (Synn & Goldman)	7	7	5	6	6	5	6	6	6	6	6	5	5	3	69	6
Kansas (Culver & Lopez)	1	2	2	3	3	2	4	1	2	3	2	3	2	1	26	2
Kansas (Ellis & Pickens)	14	11	10	10	10	12	10	14	10	14	10	9	11	12	134	10
Kentucky (Kupferberg & Hodges)	10	10	11	13	11	10	12	9	12	13	11	12	13	11	136	11
Louisville (Greco & Rogers)	16	18	17	15	18	14	21	15	15	20	18	14	18	15	199	16
Loyola (Ferguson & Mills)	17	14	18	23	13	18	23	17	23	23	14	17	15	14	213	19
Michigan (Green & Schrank)	21	20	21	18	21	20	19	21	21	17	17	20	22	21	240	20
Michigan (Speta & Loshbough)	12	12	12	14	12	11	14	11	18	15	13	16	17	19	166	13
Nebraska (Pritch & Walker)	19	17	14	11	15	16	13	16	13	10	16	15	14	17	177	15
Northwestern (Arthur & Attias)	6	4	7	7	8	7	7	7	7	7	5	7	8	6	81	7
Northwestern (Palczewski & Mitchell)	9	9	9	8	7	9	8	8	8	9	8	10	9	8	102	9
Redlands (LeFave & Leoh)	2	3	3	2	2	3	3	2	3	2	3	2	3	5	31	3
USC (Damus & Richardson)	22	23	23	20	23	21	18	22	16	19	23	21	20	23	255	22
Utah (Bsumek & Gabler)	13	19	16	19	17	17	16	19	17	16	21	18	16	18	208	18
Wayne State (Groulx & Richey)	20	22	20	21	19	22	20	20	20	21	20	22	19	20	245	21
West Georgia (Sizemore & Evans)	11	15	15	16	14	13	17	13	14	18	15	13	12	16	173	14

Note: Rankings for the teams of committee members are based on the average for that team, with the committee member's rankings renumbered to reflect that average.

1987 NATIONAL DEBATE TOURNAMENT 2ND ROUND AT-LARGE BIDS

	Busse	Scott	Rowland	Phillips	Pelham	Slagle/Ulrich	Grinder	Perkins/ Strange	Walker	Decker	Ziegelmueller	Gossett	Gass	Zarefsky	SUM AFTER HI-LOW DROP	FINAL RANK
	I	II	III	IV	V	VI	VII	VIII	IX	EFA	MFA	SFA	WFA	DIR		
Arizona State (Sannes & Mortensen)	14	13	15	13	12	15	10	15	14	10	14	7	14	2	151	14
Central Michigan (Scherer & Straight)	10	9	7	14	10	6	9	11	12	9	8	11	13	14	123	11
Claremont (Valder & Pearson)	7	12	10	12	14	11	14	9	13	15	10	14	12	12	143	13
CSU Fullerton (Buff & Shedroff)	5	3	5	8	7	9	8	6	9	11	4	13	7	8	87	6
Houston Baptist (Long & Brown)	4	4	4	4	5	8	7	8	4	6	5	4	4	10	63	4
Iowa (Lennon & Wells)	11	15	14	15	15	14	15	13	15	12	15	15	15	15	173	15
James Madison (Euchler & Russell)	13	14	13	5	8	7	3	10	5	4	11	9	8	5	98	7
Odessa (King & Haynie)	8	11	8	7	11	12	6	14	6	7	13	6	5	9	104	9
Pennsylvania (Lang & Bikowsky)	12	10	12	6	9	13	5	12	8	5	9	10	9	6	108	10
Pittsburgh (Kingsley & Craver)	2	2	2	1	4	2	1	2	3	1	1	3	2	3	24	2
Samford (Gibson & McNich)	15	8	11	11	13	4	13	4	10	14	12	12	11	13	132	12
Southern Methodist (Hail & Smithey)	6	7	6	9	3	10	12	7	11	13	7	5	10	11	101	8
Texas A&M (Carlson & White)	3	5	3	2	1	3	4	3	2	2	3	2	3	4	34	3
USC (Stamp & Lawhead)	1	1	1	3	2	1	2	1	1	3	2	1	1	1	17	1
Wake Forest (Kimball & Coverstone)	9	6	9	10	6	5	11	5	7	8	6	8	6	7	87	5

Note: Rankings for the teams of committee members are based on the average for that team, with the committee member's rankings renumbered to reflect that average. Ties were broken via consecutive hi-low drops.

NATIONAL DEBATE TOURNAMENT

A Project of the American Speech Association
and the National Speech Association

NATIONAL DEBATE TOURNAMENT

Project of the American Forensic Association
with Support from the Ford Motor Fund



March 26, 1987

To All National Debate Tournament Participants,

On behalf of the Illinois State University Forensics Union, we would like to take this opportunity to welcome you to the 41st Annual National Debate Tournament.

In this booklet, you should find answers to several of your most likely questions. Information on photocopying, parking, library hours, receptions, basketball courts, etc. is included for your information.

We would encourage you during your stay in Normal/Bloomington to patronize the merchants whose ads appear in this booklet. Their generous support has made hosting the National Debate Tournament a more feasible task.

We hope that the NDT will be both enjoyable and successful for you. If you have any questions which are not answered by the material in this booklet, feel free to ask one of us or a member of the host staff.

For the ISU Forensics Staff,

A handwritten signature in black ink, appearing to read 'Bob Chandler'.

Bob Chandler
ISU Director of Forensics

A handwritten signature in black ink, appearing to read 'Arnie Madsen'.

Arnie Madsen
ISU Director of Debate
and Tournament Host

J. ZAREFSKY
Director, NDT
Department of Communication
Western University
Normal, IL 60201

ROBERT H. GASS, JR.
Chair, NDT Committee
Dept. of Speech Communication
California State Univ., Fullerton
Fullerton, CA 92634

BILL HENDERSON
Chair, Board of Trustees
Dept. of Speech
University of Northern Iowa
Cedar Falls, IA 50614

JAMES A. JOHNSON
Treasurer, Board of
Trustees
Registrar
Colorado College
Colorado Springs, CO 80903

WILLIAM SOUTHWORTH
Director of Alumni Relations
Gannett Communication
Center
University of Redlands
Redlands, CA 92373

ARNIE MADSEN
Host, 1987 NDT
Dept. of Communication
Illinois State University
Normal, IL 61761

Illinois State University

College of Arts and Sciences
Office of the Dean

March 25, 1987

To All Participants in the 1987 National Debate Tournament:

On behalf of the College of Arts and Sciences, I am pleased to welcome you to Illinois State University for the 41st Annual National Debate Tournament.

I hope that while you are on campus you will have the opportunity to look over our facilities and talk with our students or faculty members about our academic programs. Graduate study is available in a variety of disciplines at Illinois State.

As a former NDT debater myself, I look forward to a weekend of high quality competition. Hopefully, everyone will profit from participation in this tournament.

Sincerely,



Virginia L. Owen
Dean

Illinois State University

Department of Communication

March 25, 1987

To All NDT Participants,

On behalf of the Department of Communication and Illinois State University, I would like to welcome you to the 41st Annual National Debate Tournament.

We are looking forward to having you on our campus for this culminating event of the 1986-87 debate season. I know that our forensics staff and students will do their best to make your stay a pleasant one.

Illinois State has several opportunities available for those wishing to participate in intercollegiate forensics. We have a strong program, and are actively involved in both debate and individual events. Information on the ISU program is provided in the Host Information Booklet.

We congratulate each of you on having earned the opportunity to participate in this unique experience, and are pleased that Illinois State is a part of it. Good luck to everyone.

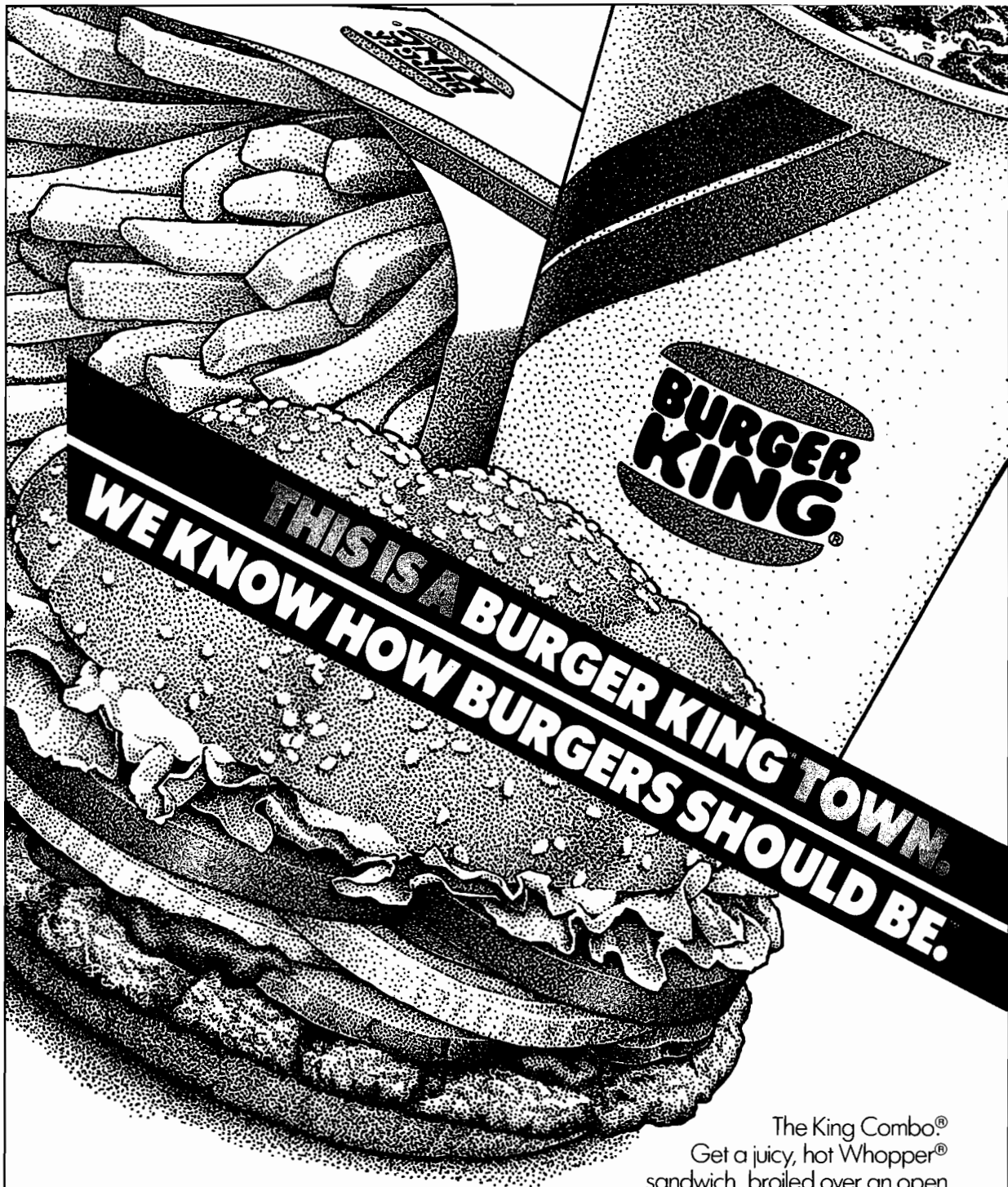
Sincerely,



Vincent Hazleton
Chair

TABLE OF CONTENTS

Tournament Schedule.....	6-7
Public Debate Information.....	7
Shuttle Services and Times.....	9
Parking on Campus.....	9
Evidence Unloading/Loading Procedures.....	11
Evidence Storage.....	11
Ballot Distribution/Round Logistics.....	12
Policy Debate Meeting.....	12
Buildings/Classroom Information.....	13
Bone Student Center Information.....	14
Library Facilities.....	15
Location of Vending Machines.....	15
Photocopying Facilities.....	16
Supplies (Pens, paper, etc.).....	16
Telephone Location and Emergency Numbers.....	17
Details on Student Receptions.....	18
Details on Coaches/Judges Receptions.....	18
Judges/Coaches Lounge.....	19
Televisions on Campus (Final 4 & Soaps).....	19
Local Law Enforcement.....	19
Guide to Bloomington/Normal--Restaurants, Special Events, Shopping Malls, Taxi Service, Movies, Recreation.....	20
Hotels--Pool and Restaurant/Bar Hours.....	20
Basketball Courts.....	21
Churches.....	23
Acknowledgements.....	24-25
Campus and Normal/Bloomington Maps.....	26-27



The King Combo®
Get a juicy, hot Whopper® sandwich, broiled over an open flame for more of a backyard barbecue taste. And along with it, a large order of crispy fries and a medium soft drink. Wotta meal!

FREE
WHOPPER® SANDWICH WHEN
YOU BUY ONE.

Please present this coupon before ordering.
Limit one coupon per customer. Not to be used
with other coupons or offers.
This offer expires **3-31-87**

Good only at
405 S. Main St.
Normal, IL



TOURNAMENT SCHEDULE

Thursday, March 26, 1987

9:00 Board of Trustees Meeting, Best Western University
Inn, Room 200
1:00 - 5:00 Registration, Sheraton Inn Atrium
1:00 NDT Committee Meeting, Best Western University
Inn, University Room
6:30 Shuttles to Campus
7:00 Public Debate and Commentary, Bone Student Center
Ballroom
8:30 Opening Assembly, BSC Ballroom
9:30 Shuttles to Hotels
10:30 - 12:00 Reception for Coaches and Judges, Best Western
University Inn, University Room

Friday, March 27, 1987

8:15 Shuttles to Campus from Hotels
8:45 Continental Breakfast, BSC Ballroom
9:15 Announcement of Round I, BSC Ballroom
10:00 Round I, Stevenson Hall
2:00 Announcement of Round II, BSC Ballroom
2:30 Round II, Stevenson Hall
5:15 District V Buffet Dinner, BSC Ballroom
6:30 Announcement of Round III, BSC Ballroom
7:00 Round III, Stevenson Hall
9:15 Shuttles to Hotels
9:30 - 10:30 Reception for Students, Best Western University
Inn, 200
9:30 - 12:00 Reception for Coaches and Judges, Best Western
University Inn, University Room

Saturday, March 28, 1987

7:30 Shuttles to Campus from Hotels
8:00 Continental Breakfast, BSC Ballroom
8:30 Announcement of Round IV, BSC Ballroom
9:00 Round IV, Schroeder Hall
1:00 Announcement of Round V, BSC Ballroom
1:30 Round V, Schroeder Hall
3:30 AFA President's Reception, BSC Prairie Room/Studio
5:30 Announcement of Round VI, BSC Ballroom
6:00 Round VI, Schroeder Hall
8:15 Shuttles to Hotels
10:00 - 11:00 Reception for Students, Best Western University
Inn, 200
10:00 - 12:00 Reception for Coaches and Judges, Best Western
University Inn, University Room

Sunday, March 29, 1987

7:00 Shuttles to Campus
7:30 Continental Breakfast, BSC Ballroom
8:00 Announcement of Round VII, BSC Ballroom
8:30 Round VII, Schroeder Hall
12:45 Announcement of Round VIII, BSC Ballroom
1:15 Round VIII, Schroeder Hall
5:15 Announcement of First Elimination Round, BSC
Ballroom
6:00 First Elimination Round
7:00 No-host Cocktail Hour, BSC Circus Room
8:30 Tournament Banquet, BSC Ballroom
10:30 Shuttles to Hotels

Monday, March 30, 1987

7:30 Shuttles to Campus
8:00 Drawing of Octafinal Judges, BSC Circus Room
8:15 Announcement of Octafinals, BSC Ballroom
8:45 Octafinals, Bone Student Center
12:00 Announcement of Quarter Finals, BSC Ballroom
12:30 Quarter Finals, Bone Student Center
3:30 Announcement of Semi Finals, BSC Ballroom
4:00 Semi Finals, Bone Student Center
7:00 Announcement of Final Round, BSC Ballroom
7:30 Final Round, BSC Ballroom

PUBLIC DEBATE

On Thursday evening, Illinois State will be sponsoring a public debate on this year's topic. All participants in the NDT are encouraged to attend this event. The debate will be followed by the opening assembly for the tournament.

The debate will be in the Ballroom of the Bone Student Center, from 7:00 - 8:30 p.m. The participants in the debate will be the following individuals:

Affirmative: Chrissy Mahoney, Dartmouth College
Cathy Palczewski, Northwestern University

Negative: John Culver, University of Kansas
Lyn Robbins, Baylor University

The debate will be critiqued by Professor Erwin Chemerinsky of the University of Southern California Law Center. Erwin was a 3-time NDT participant from Northwestern University. He has a book forthcoming, entitled Interpreting the Constitution, and has written numerous law review articles on constitutional interpretation.

DISTRICT V WELCOMES YOU TO THE 1987 NATIONAL DEBATE TOURNAMENT!

We hope that you have a successful weekend of competition.

Anderson College
Augustana College
Ball State University
Butler University
Central Michigan University
Eastern Illinois University
Ferris State College
Findlay College
Henry Ford Community College
Illinois College
Illinois State University
Indiana University
John Carroll University
Marietta College
Miami University
University of Michigan
Northwestern University
University of Notre Dame
Ohio State University
Ohio University
Otterbein College
Wayne State University
Western Illinois University

Avanti's

Italian Restaurant

**PIZZA
SANDWICHES
PASTA**

- SPAGHETTI
- RAVIOLI
- LASAGNA
- TORTELLINI

"AVANTI'S FAMOUS GONDOLAS"

**FAST FREE DELIVERY
FOR ORDERS OVER \$5**

452-4436

407 S. MAIN NORMAL, IL

SPAGHETTI FEAST — EVERY TUESDAY
— all you can eat —



SHUTTLE SERVICE

For those individuals who signed up at registration, ISU will be running a limited shuttle service from the hotels to the campus in the mornings and again from the campus to the hotels in the evenings.

Shuttles will depart each morning from both of the hotels. Departure sites on campus and shuttle times are indicated below.

Thursday	To Campus: 6:30 p.m. To Hotels: 9:30 p.m. (from BSC circle)
Friday	To Campus: 8:15 a.m. To Hotels: 9:15 p.m. (from Stevenson lot)
Saturday	To Campus: 7:30 a.m. To Hotels: 8:15 p.m. (from BSC circle)
Sunday	To Campus: 7:00 a.m. To Hotels: 10:30 p.m. (from BSC circle)
Monday	To Campus: 7:30 a.m. No regularly scheduled shuttles to hotels

PARKING DURING THE TOURNAMENT

Throughout the tournament, the pay lot immediately north of the Bone Student Center will be available.

You are welcome to park in two faculty/staff lots at any point during the tournament. One of these is located on the east side of the Bone Student Center and north of the Baptist Church on School Street. This lot is between Mulberry and Locust Streets. The other available lot is located next to Hancock Stadium, on the west side of U.S. 51. Locations for both of these lots are indicated on the campus map at the end of this booklet.

On Saturday and Sunday, you are free to park in any lot on campus. The faculty/staff lot across University Street to the west of Bone Student Center (by the ROTC building) is the closest free parking.

You will receive tickets (and risk being towed) if you park in any handicapped space, fire lane, or service vehicle space at any time during the tournament. We **CANNOT** fix such tickets--they are between you and the State of Illinois.

You will receive tickets if you park in the faculty/staff lots by Stevenson Hall or the ROTC building on Friday or Monday. Again, we can't fix these tickets for you.

ILLINOIS STATE UNIVERSITY



DEPARTMENT OF COMMUNICATION

**THE DEPARTMENT OF COMMUNICATION
WELCOMES THE
NDT TO ILLINOIS STATE UNIVERSITY**

The Department of Communication

The Department of Communication offers work leading to M.A. and M. S. degrees. Each degree is designed to meet the individual needs of the graduate student.

Courses are available in all aspects of communication, including persuasion, small group, interpersonal, education, nonverbal, language, organizational and mass communication. These courses can be beneficial to programs leading to a Master of Arts or Master of Science degree. While fulfilling degree requirements, these courses allow the individual to keep abreast with developments in the communication field and provide for professional growth.

Graduate Assistantships

The Department of Communication offers assistantships to qualified applicants. Full-time assistantships provide for a monthly stipend of \$500 for the nine-month school year, plus exemption from tuition fees for two semesters and one summer session. Assistantships usually involve teaching basic speech courses. This experience in itself is very rewarding and aids the graduate's learning process. Applications for assistantships may be obtained from the Department of Communication.

Assistantships are awarded by the graduate assistantship committee on the basis of academic merit.

LOADING/UNLOADING EVIDENCE

FRIDAY

On Friday, all of the debate rounds will be held in Stevenson Hall. We would suggest you take your materials there prior to the announcement of Round One. Unload either along School Street or in the Stevenson parking lot, and then proceed to one of the designated parking lots. **PLEASE DO NOT** park in the Stevenson lot until after 4:00 p.m. on Friday, or you will be ticketed.

SATURDAY & SUNDAY

On Saturday and Sunday, all debate rounds will be held in Schroeder Hall. There are no parking lots next to this building, so we suggest that you unload your materials along University Street or College Avenue and **IMMEDIATELY** move your vehicle to a parking lot. **DO NOT** park on University or College, or you **WILL** be towed.

MONDAY

All elimination rounds on Monday will be held in the Bone Student Center. Unload in the circle and then proceed to a designated parking lot.

EVIDENCE STORAGE

Since we will be using a different building on Friday than we will use for the rest of the tournament, there will be no evidence storage on campus Friday night.

On Saturday night, evidence may be stored in Schroeder Hall 109 or 111.

On Sunday we will have evidence storage available only for those teams who will be participating in the Octa Finals, in the Redbird Room of the Bone Student Center.

BALLOTS/ROUND LOGISTICS

After the announcement of each round, judges should proceed to the designated room. Ballots will be brought to your room by the timekeeper. If no timekeeper is assigned to your round, an ISU runner will bring the ballots to the room.

At the conclusion of the round, you should turn in your short form to the timekeeper in the round. The timekeeper will then run the ballot to the tab room personnel. If there is no timekeeper, an ISU runner will collect the ballots at your room.

PLEASE double check (or even triple check) that your ballot is correct before you turn it in to the timekeeper/runner.

A box for turning in long forms of ballots will be provided in the Judge/Coach Lounge, which is the Circus Room in the Bone Student Center.

POLICY DEBATE MEETING

At next year's Speech Communication Association National Convention in Boston, November 5-8, 1987, there will be a meeting for all interested policy debate coaches. This will be an open forum on ways to increase participation in policy debate, on the possibility of forming a policy debate association, etc. More details on the meeting will be available in the AFA Newsletter and SCA's Spectra in the near future.



107 E. Beaufort
Normal, IL 61761

"Don't Push, Don't Shove Just Keep That Line Movin"

BRING IN THIS AD AND ENJOY

- Giant ½lb. Hamburger \$1⁹⁹
- 2 pc. Chicken Basket \$1⁸⁹
- Ham and Cheese w/fries \$1⁷⁹

- Pitchers \$2⁰⁰
- Bar Drinks \$1⁰⁰

BUILDINGS/CLASSROOMS

Announcements of all rounds will occur in the Bone Student Center Ballroom. Feel free to congregate there between rounds as well.

On Friday, all debates will be held in Stevenson Hall. On Saturday and Sunday, all debates will be in Schroeder Hall. On Monday, all debates will be held in the Bone Student Center.

We would ask for your cooperation on a couple of matters regarding classrooms.

First, please do not enter any of the classrooms in Stevenson on Friday until after the classes have been dismissed. Rooms should be available by 9:50 a.m.

Some ISU professors and students may inadvertantly enter a room in the middle of the debate. All of them have been warned that NDT will be on campus, but some of them may have forgotten by tournament time. Please be considerate if such interruptions occur.

Third, we ask that you avoid moving any furniture in the classroom buildings. On Friday, all classrooms in Stevenson should be equipped with at least one table, one desk, chairs, a podium, and adequate seating for the judging panel. On Saturday, all classrooms in Schroeder should be equipped with at least two tables, chairs, a podium, and adequate seating for the judging panel.

Fourth, please help us to keep the classrooms fairly clean. Classes will be meeting in the rooms at 8:00 a.m. Monday morning.

Finally, most of the classrooms are equipped with timers on the light switches. The lights will go off after one hour unless they are re-set. The timekeepers should be paying attention to the lights, but you may want to double check.

BONE STUDENT CENTER

Bone Student Center will be the headquarters building for the tournament. You should find the facilities here very enjoyable.

Some of the available stores/facilities in BSC include the Discount Den, the Arcade, the Lobby Shop (news and snacks), the Bakery, the Bank of Illinois, and McDonalds. Hours for all of these facilities are indicated close to the entrance of the BSC Ballroom.

The Bowling and Billiards Center is located adjacent to the Bone Student Center.

McDonald's®

Welcomes
The National
Debate
Tournament

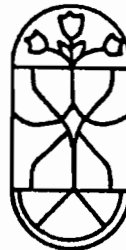
McDonald's®
Bone Student Center
Hours: M-W 7:30-10:30
Th-F 7:30-10:00
Sat. 9:00-10:00
Sun. 11:00-10:30



Records
Tapes
Film Processing
Health & Beauty Aids
Groceries

Discount Den

ISU's General Store
Bone Student Center



Bloomington Antique Mall

212 N. CENTER
BLOOMINGTON, ILLINOIS 61701
(309) 828-1211
HOURS: MONDAY 12:00 - 8:00 P.M.
TUESDAY - SATURDAY 10:00 - 5:00 P.M.

LOCATED IN THE ENSENBERGER BUILDING

LIBRARY HOURS

The closest law library is at the University of Illinois in Champaign-Urbana, so, you will probably want to make do with our local facilities. For those who are more adventurous, Champaign/Urbana is about 45 miles southeast of Normal/Bloomington on I-74. There will be signs in Champaign indicating the appropriate exit to take to reach the U of I campus.

Hours on each of the local facilities are indicated below.

ISU MILNER LIBRARY: (All floors except floor 2 close one hour before the below indicated closing time)

Thursday	8 a.m. - Midnight
Friday	8 a.m. - 11 p.m.
Saturday	9 a.m. - 11 p.m.
Sunday	Noon - Midnight
Monday	8 a.m. - Midnight

ILLINOIS WESLEYAN UNIVERSITY SHEEHAN LIBRARY: 201 E. University, Bloomington

Thursday	8 a.m. - Midnight
Friday	8 a.m. - 8 p.m.
Saturday	10 a.m. - Midnight
Sunday	1 p.m. - Midnight
Monday	8 a.m. - Midnight

NORMAL PUBLIC LIBRARY: 206 W. College Ave, Normal

Thursday	9 a.m. - 9 p.m.
Friday	9 a.m. - 5 p.m.
Saturday	9 a.m. - 5 p.m.
Sunday	1 p.m. - 5 p.m.
Monday	9 a.m. - 9 p.m.

BLOOMINGTON PUBLIC LIBRARY: 205 E. Olive, Bloomington

Thursday	9 a.m. - 9 p.m.
Friday	9 a.m. - 5 p.m.
Saturday	9 a.m. - 5 p.m.
Sunday	1 p.m. - 5 p.m.
Monday	9 a.m. - 9 p.m.

VENDING MACHINES

In Stevenson Hall the vending machines are located in 408.

In Schroeder Hall the vending machines are located in the central lobby on the first floor.

PHOTOCOPYING

There are a variety of options available for photocopying. The most convenient would be the Kinko's in the Bone Student Center or the coin operated machines located throughout Milner Library. Other photocopying outlets include Kinko's at Watterson (across the street from Watterson Towers), Copymat at 311 S. Main in Normal, The Copy Company at 111 W. Front in Bloomington, and The Copy Shop at 519 N. Main in Bloomington.

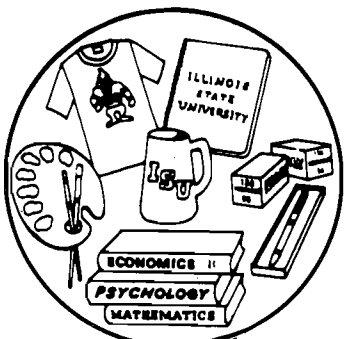
SUPPLIES

We would suggest the two stores which have advertised in this booklet, and they will also prove the most convenient for purchasing your supplies over the course of the tournament. The first of these is the Discount Den, which is located on the First Floor of the Bone Student Center. The other option would be the Alamo II, which is the building immediately north of Stevenson Hall.

THE Alamo II

BOOKS SCHOOL SUPPLIES GIFTS

*"Serving Illinois State University
and The Surrounding Community Since 1933"*



- Hallmark Cards
- Textbooks
- Photo Finishing
- Art Supplies
- School Supplies
- Gifts
- Calculators
- T-Shirts
- ISU Souvenirs
- (We Custom Imprint)

319 North St., Normal
Ph. 452-7406

TELEPHONES/EMERGENCY INFORMATION

In Stevenson Hall, there are telephones located at each end of the building on the first floor.

In Schroeder Hall, there are telephones located in the central lobby on the first floor, and outside on the quad.

If there are any emergencies (room conflicts, locked rooms, etc), you may call the numbers listed below. Help should be on the way soon. With a campus phone you just need to dial the last five numbers.

- | | |
|----------|--|
| 438-2022 | ISU Host Headquarters--Should have a live body next to it throughout the tournament. |
| 438-7139 | Madsen's Office--Should have an answering machine hooked up throughout the tournament. |
| 438-3671 | Last Resort--Communication Office--Should have someone available from 7:30 a.m. - 4:30 p.m. on Friday and Monday. Ask for Doug Jennings. Call only if neither of the first two numbers work. |

If you have a more serious emergency, please call one of the following numbers:

- | | |
|----------|----------------------------------|
| 438-8631 | University police |
| 438-8655 | University health service |
| 530 | From a campus phone--fire/rescue |
| 911 | From other phones--fire/rescue |

RECEPTIONS FOR STUDENTS

On Friday and Saturday evening, the Midwest Forensic Association will be hosting receptions for student participants. These receptions will be held in room 200 of the Best Western University Inn.

Given the current nature of Illinois liquor laws, there will be no alcohol served at these receptions. However, there will be soft drinks, chips, etc.

On Friday the reception will be from 9:30 - 10:30 p.m. On Saturday the reception will be from 10:00 - 11:00 p.m.

RECEPTIONS FOR COACHES

District V and Illinois State will be hosting receptions for coaches and guest judges on Thursday, Friday, and Saturday evenings. These receptions will be held in the University Room of the Best Western University Inn.

On Thursday the reception will be from 10:30 - midnight. On Friday the reception will be from 9:30 - midnight. On Saturday, the reception will be from 10:00 - midnight.



Best Western University Inn

YOUR BEST LODGING VALUE

INDOOR POOL	SAUNA
MEETING ROOMS	NON-SMOKING ROOMS
ROOMS WITH KING BEDS	ROOMS WITH 2 DOUBLE BEDS
CONNECTING ROOMS	HANDICAP ACCESS ROOMS

FREE CONTINENTAL BREAKFAST

BEST WESTERN UNIVERSITY INN

1-55 & Rt. 51
#6 TRADERS CIRCLE
NORMAL, IL 61761
(309) 454-4070

JUDGE/COACH LOUNGE

The lounge for judges and coaches during the tournament will be the Circus Room in the Bone Student Center. In the Circus Room you should find a coffee pot in relatively continuous operation.

The box for turning in long forms of ballots will also be located in the Circus Room.

FINAL FOUR BASKETBALL AND SOAP OPERAS

There is a big screen TV in the Prairie Room of the Bone Student Center. In addition, there are TVs in most of the classrooms on campus.

LOCAL LAW ENFORCEMENT

We try to warn all visitors to ISU about the Normal Police Department. They believe in enforcing all laws, no matter how trivial. You should be especially careful about minors (under 21) consuming alcohol and any consumption of other substances. You should also try not to speed (even a couple of miles over the limit) while you are in Normal. (One of the biggest speed traps is the section of U.S. 51 between the hotels and ISU).

The Bloomington Police Department is generally a little more real world, but you should still be careful.

Illinois has a mandatory seat belt law, but it is usually not enforced unless you are stopped for some other moving violation.

GUIDE TO NORMAL/BLOOMINGTON

We would encourage you to do business with the merchants who have advertised in this booklet. Their generous contributions have assisted with raising adequate revenue to host the NDT.

For other suggestions in the Normal/Bloomington community, we would suggest that you examine the Visitors Guide to Normal/Bloomington which you received in your registration packet. It is one of the most complete listings available for restaurants, malls, theatres, special events, etc.

HOTEL POOL AND RESTAURANT/BAR HOURS

The hours for the restaurant at the Sheraton are from 6:30 a.m. to 2:00 p.m. and 5:00 p.m. to 10:00 p.m. on weekdays, and from 7:00 a.m. to 2:00 p.m. and 5:00 p.m. to 10:00 p.m. on Saturday and Sunday. The bar hours are from 11:00 a.m. to 1:00 a.m. everyday except Sunday, while Sunday hours are 1:00 p.m. to 1:00 a.m.

The hours for the pool at the Best Western University Inn have been extended to 11:00 p.m. each evening.



Hotels, Inns & Resorts Worldwide
The hospitality people of ITT
8 Traders Circle, Interstate 55 at U.S. 51
Normal, Illinois 61761 309/452-8300

BASKETBALL COURTS

We have managed to reserve basketball courts at two times during the tournament. These are the only times that courts on campus are guaranteed to be available.

On Saturday, the small gym (room #206) in McCormick Hall has been reserved from 11:30 a.m. - 12:45.

On Sunday, the small gym (room #206) in McCormick Hall has been reserved from 11:00 a.m. - Noon.

There should be a supervisor on duty at the above times who will unlock the gym for you. You will probably be kicked out after the indicated times.

At other times during the tournament, your best hope is outdoor courts. There is an outdoor court by the Hewitt and Manchester dorms, and another one by Watterson Towers and Stevenson Hall. You may also be able to find indoor courts free at other times--no guarantees.

Rocky's

**BEER · BURGERS
· SPIRITS**

*103 Beaufort
Normal, IL*



Home of the ½lb. Hamburger

Monday - Saturday
Open 11:30 a.m. - 1:00 a.m.

FACULTY POSITIONS AVAILABLE AT ILLINOIS STATE UNIVERSITY
1987-88

TENURE LINE: Assistant or Associate Professor to coordinate programs with the College of Education, direct the Oral Communication Competency Assessment Program for all teacher education majors, revitalize the summer communication program for area teachers, and to research/develop/teach courses in instructional communication. Ph.D. preferred and teaching experience required. Application deadline, May 1.

TEMPORARY LINES: Lecture positions in any combination of the following areas:

Director of Debate: Direct the debate component of the program, administer tournaments and a summer high school workshop. Application deadline, April 15.

Director of Individual Events: Direct the speech team, administer tournaments and a summer high school workshop. Application deadline is April 15.

Assistant Director of Individual Events and/or Assistant Forensics Coach: Assist in either the administration of the debate or individual events program and coach events as needed within those programs. Application deadline is April 15.

Lecturer in Speech Communication: Teach introductory level classes in Speech Communication, Interpersonal Communication, Small Group Processes, Business and Professional Speaking, and/or Argumentation. No application deadline.

Lecturer in Public Relations: Teach introductory level classes in Public Relations such as Introduction to Public Relations, Interviewing, Reporting, Photo Journalism, Copy Editing, Community Relations, and/or Utilization of Audio and Visual Materials. No application deadline.

To ensure full consideration, the candidate should include a letter of application, current resume, three letters of application, and a current transcript to:

Dr. Vincent Hazleton, Chairperson
Department of Communication, Illinois State University
Normal, IL 61761 (309) 438-3671

All positions begin August 15, 1987. AA/EEO.

MAJOR AREA CHURCHES

First Baptist of Normal
216 W. Mulberry
Normal
452-3570

Eastview Christian Church
1705 Towanda Ave
Bloomington
662-9376

University Christian Church
(Disciples of Christ)
206 North St., Normal
452-2346

Church of Christ
909 Four Seasons Road
Bloomington
663-2236 or 662-4511

St. Matthews Episcopal
1920 E. Oakland Ave
Bloomington
662-3262

Free Methodist Church
304 Jersey Ave
Normal
452-4352

Our Saviour Lutheran
1510 N. Main
Normal
452-2277

First Presbyterian
108 N. Fell Ave
Normal
452-4459

Epiphany Catholic
1006 E. College Ave
Normal
452-2585

Faith Community Independent
1100 Beech
Normal
454-2945

Moses Montefiore Temple (Synagogue)
102 Robinhood Lane
Bloomington
662-3182

ACKNOWLEDGEMENTS

The Illinois State Forensics Union and the ISU Department of Communication would like to take this opportunity to acknowledge the assistance of several individuals and groups, for without their cooperation, hosting the NDT would have been impossible.

HOST COMMITTEE

Craig Cutbirth
Douglas K. Jennings
John Knight
Katie Malito
Jan Moreland
Kurt Straznickas

DISTRICT V BUFFET DINNER

The following tournaments added surcharges onto entry fees to raise money for the District V Dinner. The assistance of both the tournament directors and participants is greatly appreciated.

Butler University Tournament, December 1985 & 1986
District V Qualifying Tournament, Spring 1985, 1986 & 1987
Illinois State University Tournament, Fall 1984 & 1985
Illinois State University Tournament, Spring 1985 & 1986
Miami University Tournament, January 1986
National Novice Tournament, March 1986 & 1987
Ohio State University Tournament, February 1986 & 1987
Owen L. Coon Tournament, February 1986 & 1987

Individuals from the following institutions contributed their hired judging fees from various tournaments to the District V Dinner:

Henry Ford Community College
Indiana University

LOCAL CONTRIBUTIONS

College of Arts and Sciences, Illinois State University
Communication Department, Illinois State University
Comptroller's Office, Illinois State University
Provost's Office, Illinois State University
Former ISU Forensics Directors
John Boaz
Craig Cutbirth
Ted Jackson
Bill Sendlak

STUDENT RECEPTIONS

Midwest Forensic Association

PUBLIC DEBATE

Erwin Chemerinsky
John Culver
Chrissy Mahoney
Cathy Palczewski
Lyn Robbins

BIG BOARD CONSTRUCTION

Douglas K. Jennings

ROOM CANCELLATIONS/MOVES

ISU Scheduling Office
Accounting Department
Applied Computer Science Department
Business Education and Administrative Services Department
Communication Department
Economics Department
English Department
Foreign Language Department
Management and Quantitative Methods Department
Mathematics Department
Philosophy Department

TIMEKEEPERS AND RUNNERS

Illinois State University Forensics Union
ISU Communication Department Students
Local Area High School and University Students

PHOTOGRAPHY ARRANGEMENTS

Debra Drees

MEDIA AND FINAL ROUND RECORDING ARRANGEMENTS

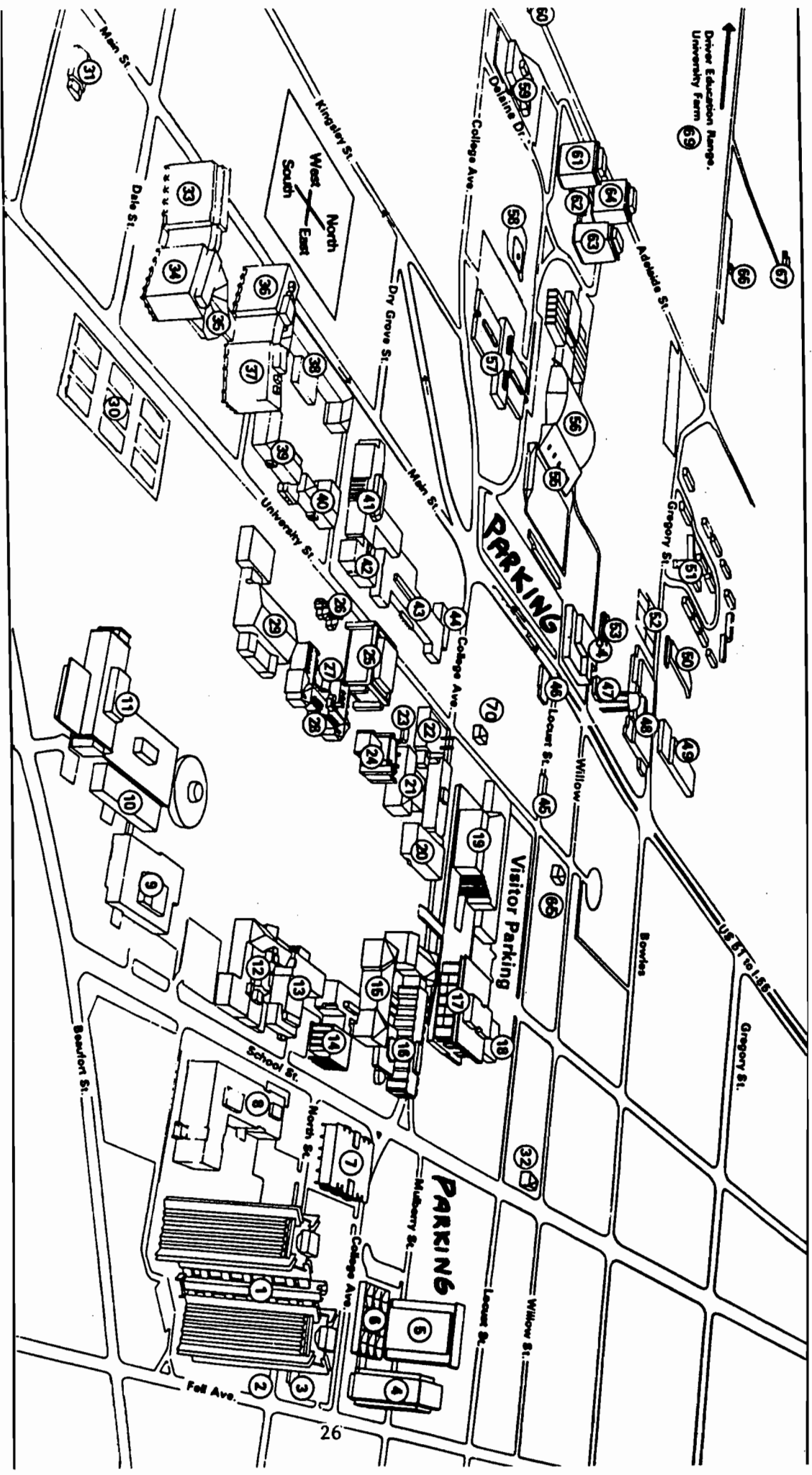
Deb Rozak
Jay Groves

BARTENDERS

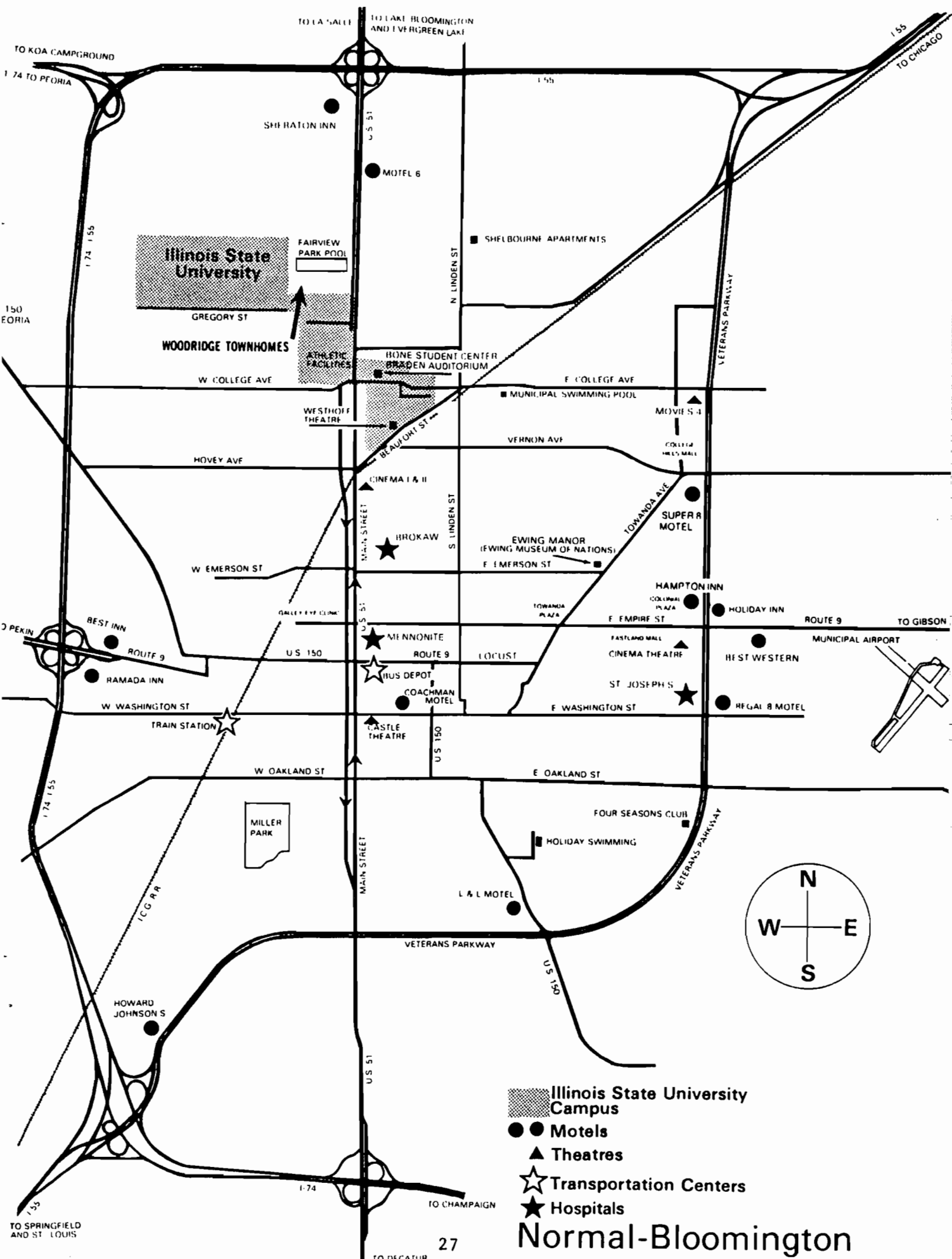
Doug Leland
Pam Lovell
Elighie Wilson

SECRETARIAL ASSISTANCE

Pam Miller
Gioia Morgan
Shirley Schaller
Communication Department Student Workers



- Astin Hall (33)
- Architecture-Engineering (32)
- Burton Hall (40)
- Bone Student Center/Bradford Auditorium (19)
- Bowling-Billard's Center (18)
- Campus Recreation (46)
- Caplan Auditorium (21)
- Cardinal Court (61)
- Carver Harris Physical Plant (50)
- Centennial East (49)
- Centennial West (10)
- Center for the Visual Arts (11)
- Center for the Visual Arts Gallery
- Clerence R. Ropp Agriculture Building (64)
- Colby Hall (24)
- Cook Hall (24)
- Cooper Health Services (42)
- DuGarmo Hall (25)
- Dunn Hall (39)
- Educational Administration Annex (3)
- Edwards Hall (21)
- Eyestone School Museum (60)
- Fairchild Hall (41)
- Feeney Center (36)
- Fell Hall (28)
- Fairney Hall (16)
- General Services Building (59)
- Green Food Services Building (49)
- Harrison Hall (37)
- Hancock Stadium (56)
- Hayden Auditorium (44)
- Haynie Hall (63)
- Heating Plant (22)
- Hewett Hall (4)
- High Potential Student Program (66)
- Horton Field House (56)
- Hovey Hall (Administration) (14)
- Hudelson Farm Museum (47)
- Julian Hall (7)
- Linkin Center (62)
- Manchester Hall (6)
- McCormick Hall (29)
- Medical School (43)
- Milner Library (17)
- Moulton Hall (15)
- Office of Residential Life (27)
- Parking Services (59)
- Placement Services (31)
- Planetarium (16)
- Professional Practice (3)
- Rambo Alumni/Foundations House (26)
- Reidbird Baseball Field (58)
- Ropp Agriculture Building (64)
- ROTC Building - Military Science (70)
- Schroeder Hall (20)
- Special Services (66)
- Strenson Hall (8)
- Student Association (46)
- Turner Hall (57)
- University Farm (69)
- University Golf Course (66)
- University High School (48)
- University High Tennis Courts (62)
- University Residence (67)
- University St. Tennis Courts (30)
- Videtta (23)
- Viro Center (53)
- Vrooman Center (6)
- Walker Hall (38)
- Watson Commons (2)
- Westernson Towers (1)
- Washoff Theatre (9)
- Whitman Hall (36)
- Widkins Hall (61)
- Williams Hall (12)
- Whight Hall (64)



Illinois State University

-  Illinois State University Campus
-  Motels
-  Theatres
-  Transportation Centers
-  Hospitals

Normal-Bloomington

Illinois State University

. . . . AFTER THE TOURNAMENT

. . . . AFTER YOUR COLLEGE CAREER

. . . . AFTER THE "GOLDRUSH"

GRADUATE SCHOOL?? FOR YOU?? CONSIDER YOUR POSSIBILILITES AT ISU.

Illinois State University offers fully accredited graduate programs leading to the Masters degree or beyond. Graduate Assistanships are available now in all programs. Look at the list below. If there is something here for you, fill out the coupon and drop it off in the "Long Form Ballot Box" in the Circus Room, or mail it directly to the Dean of the College of Arts and Sciences. Consider your possibilities at ISU.

Graduate Programs

. . .Biological Sciences	. . .History
. . .Chemistry	. . .Mathematics
. . .Communication	. . .Political Science
. . .Economics	. . .Psychology
. . .Foreign Languages	. . .Sociology, Anthropology, Social Work
. . .Geography	. . .Speech Pathology/Audiology

NAME: _____

ADDRESS: _____

CITY: _____ STATE: _____ ZIP: _____

PROGRAM(S) YOU ARE INTERESTED IN: _____

Drop off in the "LONG FORM BALLOT BOX" in the Circus Room or mail to:

Office of the Dean
College of Arts and Sciences
141 Stevenson Hall
Illinois State University
Normal, IL 61761