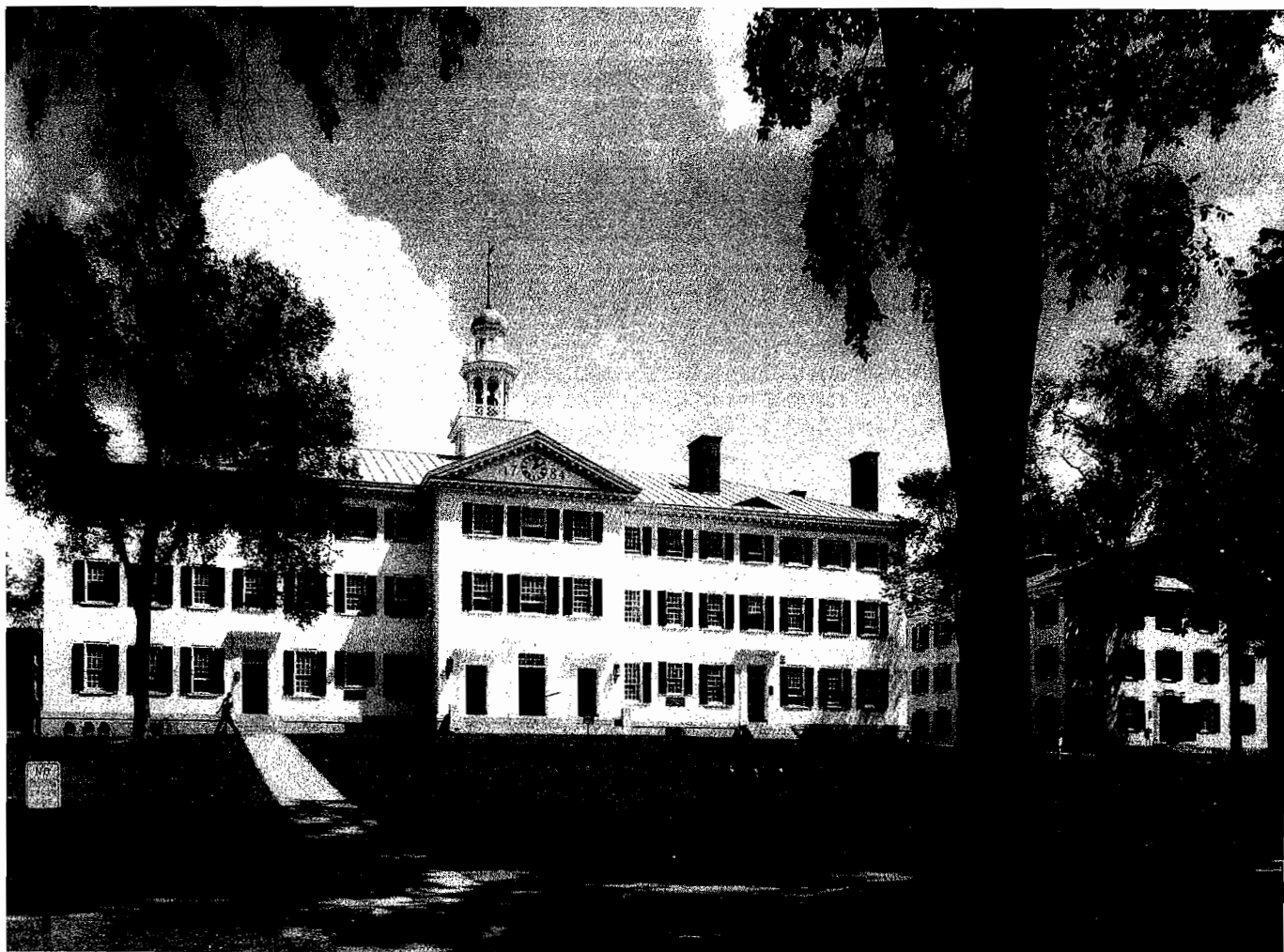


NDT FORTIETH ANNUAL NATIONAL DEBATE TOURNAMENT 1986



DARTMOUTH COLLEGE
HANOVER · NEW HAMPSHIRE
03755

THE PRESIDENT

February 4, 1986

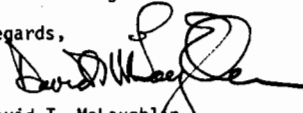
To The Participants in the 1986 National Debate Tournament:

On behalf of the faculty, staff, and students of Dartmouth College, I am delighted to welcome you to our campus. We are proud to serve as the host of the 40th National Debate Tournament.

We at Dartmouth College have consistently and strongly supported intercollegiate debate. The skills developed through debating are essential to a sound liberal arts education and assist the students in learning how to evaluate ideas, to develop cogent arguments, and to communicate clearly. Because of the similarity between the goals of your activity and our purposes as an institution of higher education, we are very honored to have you with us.

I am confident that Herb James, Ken Strange, and their staff and students will make your visit to Hanover a memorable one. Herb, Ken and I wish you all the best of luck in the coming debates.

Regards,



David T. McLaughlin

NDT 1986

American
Forensic
Association



PRESIDENT
MARIDELL FRYAR Midland Independent School District

VICE PRESIDENT
PATRICIA M. GANER Cypress College

SECRETARY
JAMES W. PRATT University of Wisconsin River Falls

TREASURER
JAMES A. JOHNSON The Colorado College

NATIONAL COUNCIL
THOMAS A. HOLLIHAN University of Southern California
KAREN KINO LEE Indiana University
BILL BALTHROP University of North Carolina
CAROLYN KEEFE West Chester University
DONALD C. NICHOLS Pennsylvania College Podunk
RICHARD A. HUNSAKER Belleville West High School
THOMAS B. McCLAIN New Trier High School

IMMEDIATE PAST PRESIDENT
JACK RHODES Augustana College

March 12, 1986

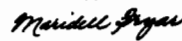
To All Participants in the 1986 National Debate Tournament:

Welcome to Dartmouth College and the National Debate tournament! I extend to each of you the congratulations of the American Forensic Association for the successful competitive achievements which have enabled you to participate in this important event.

The hospitality which has been extended to you by President David T. McLaughlin and Professor Herb James of Dartmouth College will assure you of the value which is placed on the skills you will use during the course of this tournament. We are also deeply indebted to Dartmouth's Vice President Emeritus, Orton H. Hicks, for his generous support of this tournament. The Dartmouth Forensic League and the entire Office of Speech have worked tirelessly to ensure that our stay at Dartmouth will be pleasant. I hope you will express your appreciation to them, to David Zarefsky, Tournament Director, and to members of the NDT Committee and Board of Trustees for their diligent efforts to plan this year's tournament.

Through your participation in the 1986 National Debate Tournament, you represent the best in American intercollegiate forensics. It is the hope of the American Forensic Association that each round you debate during this tournament will advance the quality of argumentation and will prove personally rewarding to you.

Sincerely,



Maridell Fryar
President



Leo J. Brennan, Jr.
Executive Director

Ford Motor Company Fund
The American Road
P.O. Box 1000
Dearborn, Michigan 48121-1000
February 19, 1986

To All Participants in the 1986 National Debate Tournament:

Once again, Ford Motor Company Fund is honored and privileged to co-sponsor the National Debate Tournament, and I extend best wishes and congratulations to all participants. Your presence at this Tournament reflects the many achievements you have already accomplished, and we are pleased to be associated with you in this outstanding event.

With every best wish for continued success in the years ahead, I am

Sincerely,



Welcome!

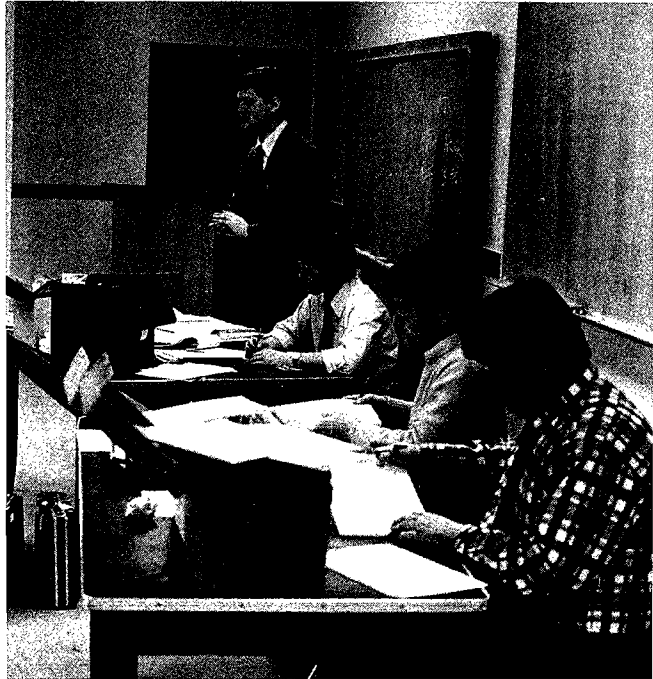
40th National Debate Tournament 1986

The National Debate Tournament began at the United States Military Academy in 1947. The NDT was organized and run by the Academy, at West Point, for its first twenty years. In the early years of the tournament, the rules were determined by West Point administration in consultation with such debate coaches as A. Craig Baird of the University of Iowa, G.M. Musgrave of Des Moines, Alan Nichols of the University of Southern California, E.R. Nichols of the University of Redlands, and Joseph O'Brien of Pennsylvania State University.

At the first tournament in 1947, twenty-nine colleges participated in five "seeding" rounds and four elimination rounds over a three-day period. Some of the features of the tournament were that no school would meet a school within five hundred miles of it during the seeding rounds and that no coach would judge a school from his or her own district. Many traditions were started at West Point that year, some of which still remain today: the "big board," oral announcement of round pairings, cadet escorts for each team, teams for each debate meeting under the banner of the affirmative team, and team signs in the rooms.

In 1967, the National Debate Tournament entered a new era as the American Forensic Association, the national professional organization of forensics educators, assumed responsibility for the tournament. The NDT moved from West Point and has been hosted by a different school every year since. Control of the tournament became the responsibility of a national committee elected by those schools supporting the tournament. As debate has developed in recent years, other refinements have been added to the tournament, including the cross-examination format, formulas for allocating bids to the tournament, the ten minute rule, elaborate procedures for assigning judges, judging qualifications, and published critiques of the final debate.

Over the years, the tournament has expanded to



Debate in Progress

sixty-two teams with various procedures used for their selection. In the early days, teams were chosen by district nominating committees. This method later was replaced by some form of qualifying tournament in most districts. For the first twenty years of the NDT, the tournament host and previous year's winner received automatic invitations. Post-district at-large bids were initiated in 1968 and pre-district bids in 1971. Beginning in 1970, it has been possible for a school to qualify as many as two teams for the NDT. In the early 1970's certain large tournaments were designated as national qualifiers, but today we rely on a combination of district tournaments and at-large bids.

One key element of the National Debate Tournament has been the support of past participants and community leaders. The early contributions of the United States Military Academy are exemplified by George Walker, for whom the permanent second-

Resolved:

That more rigorous academic standards should be established for all public elementary and/or secondary schools in the United States in one or more of the following areas: language arts, mathematics, natural sciences.

40th NATIONAL TOURNAMENT – APRIL 3 to APRIL 7, 1986 DARTMOUTH COLLEGE, HANOVER, NEW HAMPSHIRE

place trophy is named. Walker was an excellent debater for West Point who won the NDT in 1956 and placed second in 1957. The support of business and professional people is typified by Sigurd S. Larmon, Dartmouth '14, for whom the permanent first-place trophy is named. In recent years financial grants from the Ford Motor Company Fund have made it possible for the tournament to prosper. Their support is recognized in the Ford Fund watches for the final round participants.

Perhaps the most important aspect of the National Debate Tournament through the years has been the people associated with it. Key people in many fields and professions have received communicative and argumentative training from debate, have displayed these skills in the National Debate Tournament, and remember the NDT as a significant event in their lives.

The fortieth National Debate Tournament is sponsored by the American Forensic Association with support from the Ford Motor Company Fund. District and national committees have expended much time and effort to insure that the tournament reflects the highest quality debating throughout the nation.

Sixteen teams were selected at-large by the National Debate Tournament Committee on the basis of outstanding records prior to the District tournaments. Thirty-six teams representing the nine Districts were invited on the basis of their superior debating in District tournaments. Ten additional teams were selected by the National Committee on an at-large basis after the District Tournaments.

Guest judges, recommended by their District committees and selected by the tournament director, join coach-judges accompanying the debate teams to staff three-person judging panels. In the first two preliminary rounds, judges are assigned according to the discretion of the tournament director. Within specific constraints, judges are assigned to a particular debate on the basis of random selection. In rounds three through eight, and in the elimination rounds, judge panels are constituted on the basis of the mutual preferences of the teams involved in the

given debate. These standards are designed to provide the best balance and highest quality criticism and evaluation of debate rounds.

The first round is matched on a pre-set schedule based upon the order in which teams qualified for the tournament, with schools from the same district not meeting. All other odd-numbered rounds are paired on the basis of direct power (high records meeting high records). All even-numbered rounds are paired high-low within records. Any team can be paired against any other school in the preliminary rounds, and against any other team in the elimination rounds.

On the basis of records in the eight preliminary rounds, the top sixteen teams are selected by win-loss records, total ballots, and adjusted speaker points for elimination round competition, and are placed in an elimination bracket according to their preliminary round records. Four rounds of elimination round competition culminate in the selection of one team as the national champion of collegiate debate. Awards are given to the outstanding speakers after the eight rounds of preliminary competition. Ten speakers are recognized on the basis of adjusted speaker points, with highs and lows being dropped up to four times.



Baker Library

Officials

DIRECTOR:

David Zarefsky,
Northwestern University

HOST:

Herbert L. James,
Dartmouth College

HOST COMMITTEE:

Lucy M. Keele,
California State University, Fullerton

David B. Rhaesa,
Dartmouth College

Douglas Q. Sigel,
Dartmouth College

Kenneth M. Strange,
Dartmouth College

**Members of the
Dartmouth Forensic Union**

ADMINISTRATION:

Jean DeHart,
Clemson University

Michelle Howard,
Northwestern University

Patricia L. Linder,
University of Georgia

Kathryn Olson,
Northwestern University

Gil Skillman,
Brown University

Paul Slappey,
University of Iowa

Richard B. Sodikow,
Bronx High School of Science

TOURNAMENT COMMITTEE:

Robert C. Rowland,
Baylor University,
AFA Southern Representative, Chair

Walter Ulrich,
Vanderbilt University, District VI,
Secretary

William Slagle,
Mercer University, District VI,
Parliamentarian

William Southworth,
University of Redlands, District I

Larry S. Richardson,
Western Washington University, District II

Glen Strickland,
Northeastern State University, Oklahoma,
District III

Neil Phillips,
University of Northern Iowa, District IV

Steve Koch,
Ohio University, District V

Warren Decker,
George Mason University, District VII

Dallas Perkins,
Harvard University, District VIII

Kenneth M. Strange,
Dartmouth College, District VIII

B. Wayne Callaway,
University of Wyoming, District IX

Jerry M. Goldberg,
Pace University,
AFA Eastern Representative

George Ziegelmueller,
Wayne State University,
AFA Midwestern Representative

Robert H. Gass,
California State University, Fullerton,
AFA Western Representative

David Zarefsky,
Northwestern University,
Tournament Director

Maridell Fryar,
Midland Independent School District,
AFA President (ex officio)

Donn W. Parson,
University of Kansas, Chair,
NDT Board of Trustees (ex officio)

Charles Kauffman,
Northwestern University, Chair,
AFA Educational Practices Committee
(ex officio)

Herbert L. James,
Dartmouth College, Tournament Host
(ex officio)

BOARD OF TRUSTEES:

Donn W. Parson,
University of Kansas, Chair (1986)

James A. Johnson,
The Colorado College, Treasurer (1988)

Bill Henderson,
University of Northern Iowa (1989)

Vernon McGuire,
Texas Tech University (1990)

James J. Unger,
Georgetown University (1987)

District Committees

DISTRICT I

William Southworth, University of Redlands,
Chair
Jay Busse, Loyola-Marymount University
Steven Combs, Claremont-McKenna College
Dave Cooley, California State University, Pomona
Doug Fraleigh, California State University,
Sacramento
Paul Gaske, San Diego State University
Thomas A. Hollihan,
University of Southern California

DISTRICT II

Larry S. Richardson, Western Washington
University, Chair
Michael Bartanen, Pacific Lutheran University
Darrell W. Scott, Gonzaga University
Kevin M. Twohy, Carroll College
Bob Withycombe, Whitman College

DISTRICT III

Robert C. Rowland, Baylor University, Chair
Douglas Duke, Central State University, Oklahoma
Amy Fugate, San Jacinto State University
John S. Gossett, North Texas State University
Wayne Kraemar, Texas A & M University
Vernon McGuire, Texas Tech University
Donn W. Parson, University of Kansas

DISTRICT IV

Neil Phillips, University of Northern Iowa,
Chair
Mary Gill, University of North Dakota
Dick Lesicko, Macalester College
Jeff Philpott, Gustavus Adolphus College
Andy Rist, University of South Dakota
Fred Sternhagen, Concordia College

DISTRICT V

Steve Koch, Ohio University, Chair
Ralph Carbone, Butler University
Craig Cutbirth, Illinois State University
Charles Kauffman, Northwestern University
Frank Macke, Western Illinois University
Mark Wayda, Ohio State University

DISTRICT VI

Bill Slagle, Mercer University, Co-Chair
Walter Ulrich, Vanderbilt University, Co-Chair
Richard Edwards, Georgia State University,
Vice-Chair
Bill Balthrop, University of North Carolina
Tim Hynes, University of Louisville
J.W. Patterson, University of Kentucky
David Svaldi, West Georgia College

DISTRICT VII

John Morello, James Madison University,
Chair
Warren Decker, George Mason University,
NDT Representative
Bro. Edward Grinder, St. Vincent College
Barbara Sims, Alderson-Broaddus College
Phillip Warken, U.S. Naval Academy
Michael Weiler, University of Pittsburgh

DISTRICT VIII

Dallas Perkins, Harvard University, Co-Chair
Kenneth M. Strange, Dartmouth College,
Co-Chair
Joe Goergen, Canisius College
Jerry M. Goldberg, Pace University
Glenn Graham, Bates College
Alfred Snider, University of Vermont
Joe Willmore, University of Massachusetts

DISTRICT IX

B. Wayne Callaway, University of Wyoming,
Chair
Charles Brody, University of Denver
Henry Johnson, U.S. Air Force Academy
James A. Johnson, Colorado College
Sharon B. Porter, Northern Arizona University
Gregg Walker, University of Utah

1986 NDT Schedule

THURSDAY, APRIL 3

- 3:00–6:30 Registration, Sheraton North Country Inn
- 10:30–11:30 Registration, Sheraton North Country Inn
- 10:30 Reception for Coaches and Judges, Sheraton North Country Inn

FRIDAY, APRIL 4

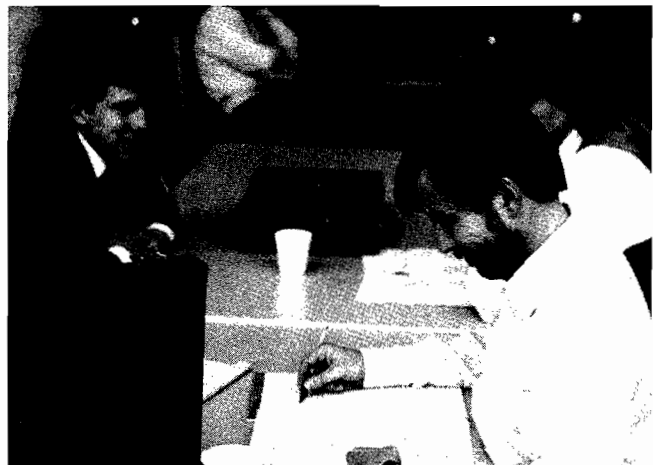
- 8:30–9:00 Late Registration, Sheraton North Country Inn
- 12:30 Shuttles to the campus
- 1:00 District VIII Reception, Top of the Hop, Hopkins Center
- 1:30 Opening Assembly, Spaulding Auditorium, Hopkins Center
- 2:30 Announcement of Round I
- 3:15 Round I
- 5:30 Tournament Dinner, Alumni Hall, Hopkins Center
- 7:30 Announcement of Round II
- 8:00 Round II
- 10:00 Shuttles to the motel
- 10:30 Reception for Coaches and Judges, Sheraton North Country Inn

SATURDAY, APRIL 5

- 7:45 Shuttles to the campus
- 8:00 Continental Breakfast, Alumni Hall, Hopkins Center
- 8:30 Announcement of Round III
- 9:00 Round III
- 12:45 Announcement of Round IV
- 1:15 Round IV
- 3:30 Refreshments, Alumni Hall, Hopkins Center
- 5:00 Announcement of Round V
- 5:30 Round V
- 7:30 Shuttles to the motel
- 9:00 Reception for Coaches and Judges, Sheraton North Country Inn



Random Judging Panel



Deciphering the Bracket

**40th NATIONAL TOURNAMENT – APRIL 3 to APRIL 7, 1986
DARTMOUTH COLLEGE, HANOVER, NEW HAMPSHIRE**



Coaching Session

SUNDAY, APRIL 6

- 7:15 Shuttles to the campus
- 7:30 Continental Breakfast, Alumni Hall, Hopkins Center
- 8:00 Announcement of Round VI
- 8:30 Round VI
- 12:15 Announcement of Round VII
- 12:45 Round VII
- 2:45 AFA President's Reception, Collis Center
- 3:45 Refreshments, Alumni Hall, Hopkins Center
- 4:30 Announcement of Round VIII
- 5:00 Round VIII
- 7:00 Shuttles to the motel
- 7:30 No-Host Cocktail Hour, Poolside, Sheraton North Country Inn
- 8:30 Tournament Banquet, Grand Ballroom, Sheraton North Country Inn

MONDAY, APRIL 7

- 8:00 Drawing of Octafinal Judges, West Ballroom, Sheraton North Country Inn
- 8:15 Announcement of Octafinal Pairings, East Ballroom, Sheraton North Country Inn
- 8:45 Octafinal Rounds
- 12:00 Announcement of Quarterfinal Pairings, East Ballroom, Sheraton North Country Inn
- 12:30 Quarterfinal Rounds
- 3:30 Announcement of Semifinal Pairings, East Ballroom, Sheraton North Country Inn
- 4:00 Semifinal Rounds
- 7:00 Announcement of Final Pairings, East Ballroom, Sheraton North Country Inn
- 7:30 Final Debate, East Ballroom, Sheraton North Country Inn

Participating Teams and Coaches

DISTRICT I

California State University, Fullerton

Jon Bruschke

Mike Dolny

Coaches: Robert Gass, Ed Hinck, Brent Brossmann

Loyola Marymount University "A"

Peter Ferguson

Peter Graham

Coaches: Jay Busse, Barbara Busse

Loyola Marymount University "B"

Roselyn Coyne

Ryan Mills

Coaches: Jay Busse, Barbara Busse

University of Redlands

Jeff LaFave

Jeff Leon

Coach: William Southworth

University of Southern California "A"

David Damus

Eric Richardson

Coaches: Thomas Hollihan and Randall Lake

University of Southern California "B"

Alan Lawhead

Reggie Twigg

Coaches: Thomas Hollihan and Randall Lake

DISTRICT II

Gonzaga University "A"

Bob Gilmore

Peter Hammer

Coach: Joan Archer-Cronin

Gonzaga University "B"

Lyndon Abel

Steve Meyer

Coach: Joan Archer-Cronin

Western Washington University

Jon Barker

Jeff Parcher

Coaches: Larry S. Richardson, Edward Inch,
and Kenneth Bahm

DISTRICT III

Baylor University "A"

Mark J. Dyer

Lyn Robbins

Coaches: Robert C. Rowland and David B. Hingstman

Baylor University "B"

David Giardina

Griffin Vincent

Coaches: Robert C. Rowland and David B. Hingstman

Central State University

Martin Glendinning

David Widdoes

Coach: Douglas Duke

University of Kansas "A"

George Lopez

John Culver

Coaches: Donn Parson and John Bart

University of Kansas "B"

Barry Pickens

Patrick Whalen

Coaches: Donn Parson, Tom Burkholder, and Jack Hart

North Texas State University "A"

Kyle Garrison

Will Helixon

Coaches: John Gossett and Mark DeLoach

North Texas State University "B"

Matthew Caligur

Keith Woods

Coaches: John Gossett, Mark DeLoach and Sherry Hall

Odessa College

Todd Flaming

Dianne King

Coach: Don Nichols

San Jacinto College

William (Gus) Ramsey

Spencer Zuzulo

Coach: Amy Lee Fugate

University of Texas, Austin

Michael Mucchetti

Thaddeus Swiderski

Coaches: Melonie Gardner and Karla Leeper

Washburn University of Topeka

Michael Moore

Jeffrey Lynn Myers

Coaches: David L. Bowman and Harold Eddy

DISTRICT IV

University of Iowa

Charles Johns

Michael Lennon

Coaches: John Lyne, Greg Phelps,
and Roy Schwartzman

Macalester College

James Colliander

Michele Horner

Coaches: Dick Lesicko, John Jackson,
Tim Baker, and W. Scott Nobles

University of Nebraska, Lincoln

Dan Bloomingdale

John Fritch

Coaches: Jack Kay, Matt Sobnosky, and Tim Pappas

University of Northern Iowa

Gregg Fishbein

Tim Kratz

Coaches: Bill Henderson and Neil Phillips

**40th NATIONAL TOURNAMENT – APRIL 3 to APRIL 7, 1986
DARTMOUTH COLLEGE, HANOVER, NEW HAMPSHIRE**

DISTRICT V

Central Michigan University

Scott Hamilton

Cindy Scherer

Coaches: David Pelham and Jeff Mondak

Eastern Illinois University "A"

Jon-Pierre Frenza

James Lucas

Coach: Michael Bryant

Eastern Illinois University "B"

Missy Deem

Dan Hintz

Coach: Michael Bryant

Northwestern University "A"

Cathie Palczewski

Les Lynn

Coaches: Charles Kauffman, Scott Harris, Cori Dauber,
Michelle Howard, Eric Gander, and Shelley Clubb

Northwestern University "B"

Julie Arthur

Ben Attias

Coaches: Charles Kauffman, Scott Harris,
Cori Dauber, Michelle Howard, Eric Gander,
and Shelley Clubb

Ohio State University

Michael Green

Richard Schoenstein

Coaches: Mark Wayda and Marie Dzuris

Wayne State University "A"

Ben Biermann

Dean Groulx

Coaches: George Ziegelmueller, Kelly Burns,
and Mark Pouley

Wayne State University "B"

Kathleen Edelmayer

Shannon Richey

Coaches: George Ziegelmueller, Kelly Burns,
and Mark Pouley

DISTRICT VI

Auburn University

Randy Glazer

Jim Summers

Coach: Pierre Heidrich

Emory University "A"

Scott Segal

Michael Weiss

Coaches: Melissa Wade, Bill Newnam, and Judy Butler

Emory University "B"

Bill Russell

Maria Salterio

Coaches: Melissa Wade, Bill Newnam, and Judy Butler

Georgia State University

Kevin Fillion

Ricky Varnadoe

Coach: Rich Edwards

University of Kentucky "A"

David Brownell

Ouita Papka

Coaches: J.W. Patterson and Roger Solt

University of Kentucky "B"

Paul Flowers

Eric Kupferberg

Coaches: J.W. Patterson and Roger Solt

University of Louisville "A"

Lynn Bearden

Mike Greco

Coaches: Tim Hynes and Bill Shanahan

University of Louisville "B"

Harry Hebert

Russ Rogers

Coaches: Tim Hynes and Bill Shanahan

University of North Carolina

Mike Egues

Jeremy Ofseyer

Coaches: Bill Balthrop, David Cheshier,
and Paul Rosenthal

Samford University

Guy Boozer

Keith Herron

Coaches: Skip Coulter and Erik Walker

Wake Forest University

Robert Bowser

Gloria Cabada

Coaches: Allan Loudon and Ross Smith

West Georgia College "A"

Alfred Evans

James Sizemore

Coaches: Chester Gibson, David Svaldi,
and Steve Garmon

West Georgia College "B"

Dee Ann Butler

Kevin Wangerin

Coaches: Chester Gibson, David Svaldi,
and Steve Garmon

DISTRICT VII

George Mason University "A"

Ronald Bratt

Beth Butswinkas

Coach: Warren Decker

George Mason University "B"

Jeff Haynes

Kambie Johnston

Coach: Warren Decker

Participating Teams and Coaches

Georgetown University

Michael Mazarr
Stuart Rabin
Coach: Greg Mastel

James Madison University

Brian James
J. Robert Russell
Coaches: John T. Morello and Roger Soenksen

University of Pittsburgh

Pat Kingsley
Andrea Pierce
Coaches: Michael Weiler, Star Muir,
and Edward Panetta

West Virginia University

Bill Walasinski
Ken Webb
Coach: Dennis Lynch

DISTRICT VIII

Bates College

Chris Janak
Kim Leighton
Coaches: Robert Branham and Glenn Graham

Dartmouth College "A"

Erik Jaffe
Chrissy Mahoney
Coaches: Herb James, Ken Strange,
David Rhaesa, and Doug Sigel

Dartmouth College "B"

Craig Budner
Ron Merriman
Coaches: Herb James, Ken Strange,
David Rhaesa, and Doug Sigel

Harvard University "A"

Charlie Synn
Teresa Uthurralt
Coaches: Dallas Perkins, Jonathan Wiener,
Jonathan Massey, and Ed Swaine

Harvard University "B"

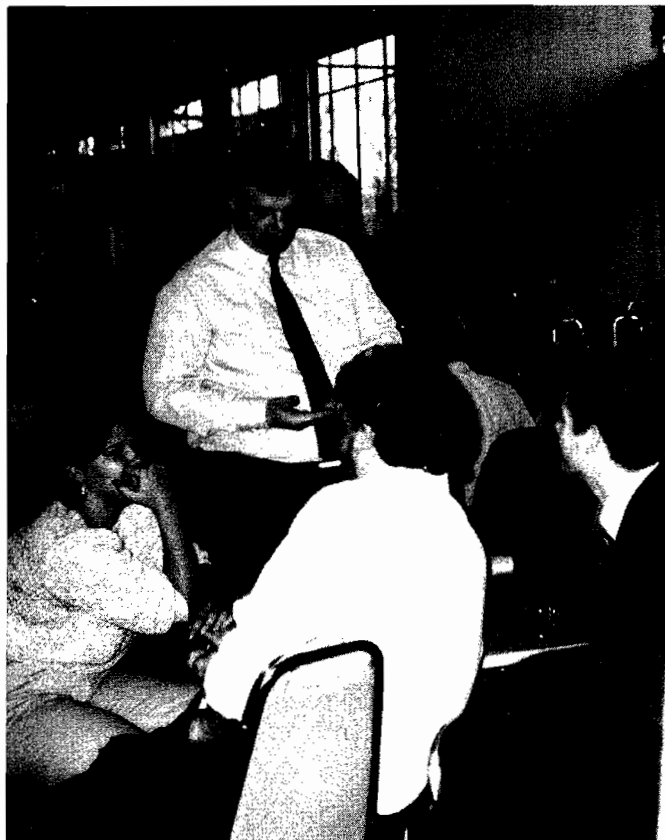
Harry A. Chernoff
Marc Goldman
Coaches: Dallas Perkins, Jonathan Wiener,
Jonathan Massey, and Ed Swaine

University of Massachusetts

Mark Friedman
Danny Povinelli
Coaches: Joe Willmore and Shelly James

University of Vermont

James Greenwood
Charles J. Morton
Coaches: Alfred C. Snider and Steve Dolley



Waiting for Pairings

DISTRICT IX

University of Utah "A"

Brooks R. Amiot
Peter K. Bsumek
Coaches: Gregg Walker, Ann Burnett,
and K. Jeanine Congalton

University of Utah "B"

Todd L. Gabler
Joe Martin
Coaches: Gregg Walker, Ann Burnett, and K. Jeanine
Congalton

Weber State College

Tony Justman
Kirk Larsen
Coach: David M. Berube

University of Wyoming

R. Rene Carson
Jennifer Kams
Coach: Wayne Calloway

1985 NDT Results

Top Speakers

1.	Danny Povinelli	Massachusetts	623	567		
2.	Doug Sigel	Northwestern A	623	566		
3.	Lyn Robbins	Baylor A	620			
4.	Michael Mankins	Kentucky A	617			
5.	John Doran	Loyola	614	560		
6.	David Bloom	Claremont	614	559	504	
7.	Jonathan Massey	Harvard A	614	559	503	
8.	Ouita Papka	Kentucky A	611	557		
9.	Glenn Graham	Bates A	611	556		
10.	Karla Leeper	Iowa	610	555	499	444

Qualifying Teams

1.	Baylor A (Dyer-Robbins)	7-1	20	1229
2.	Claremont (Bloom-Mastel)	7-1	20	1223
3.	Northwestern A (Lynn-Sigel)	7-1	18	1229
4.	Redlands (Hengesbach-Leon)	6-2	18	1197
5.	Harvard A (Massey-Swaine)	6-2	16	1208
6.	Samford (Hall-Herron)	6-2	16	1188
7.	Loyola (Doran-Ferguson)	6-2	14	1199
8.	Dartmouth A (Jaffe-McGaffey)	6-2	13	1198
9.	Massachusetts (Friedman-Povinelli)	5-3	16	1217
10.	Georgia State (Russell-Varnadoe)	5-3	16	1198
11.	Iowa (Garman-Leeper)	5-3	15	1194
12.	Kentucky B (Flowers-Kupferberg)	5-3	15	1188
13.	Kentucky A (Mankins-Papka)	5-3	14	1228
14.	Emory A (Arney-Segal)	5-3	14	1206
15.	Wayne State A (Biermann-Mondak)	5-3	14	1199
16.	Eastern Illinois A (Frenza-LaFave)	5-3	14	1198



1985 NDT Champions
Ed Swaine and Jonathan Massey, Harvard University with Permanent First Place Trophy

Tournament Results, 1947-1985

YEAR	CHAMPIONS	RUNNERS-UP
1947	Southeastern State College W. Scott Nobles and Gerald Sanders Coach: T.A. Houston	University of Southern California Potter Kerfott and George Grover Coach: Alan Nichols
1948	North Texas State College Keith Parks and David Cotton Coach: S.B. McAlister	University of Florida Alan Weston and Gerald Gordon Coach: Wayne Eubank
1949	University of Alabama Oscar Newton and Mitchell Latoff Coach: Annabel D. Hagood	Baylor University Thomas Webb and Joseph Allbritton Coach: Glenn Capp
1950	University of Vermont Richard O'Connell and Thomas Hayes Coach: Robert B. Huber	Augustana College Dorothy Koch and Charles Lindberg Coach: Martin Holcomb
1951	University of Redlands James Wilson and Holt Spicer Coach: E.R. Nichols	Kansas State Teachers College Robert Howard and Robert Kaiser Coach: Charles Master
1952	University of Redlands James Wilson and Holt Spicer Coach: E.R. Nichols	Baylor University John Claypool and Calvin Cannon Coach: Glenn Capp
1953	University of Miami Gerald Kogan and Lawrence Perlmutter Coach: Donald Sprague	College of the Holy Cross Michael McNulty and John O'Connor Coach: Henry J. Murphy, S.J.
1954	University of Kansas William Arnold and Hubert Bell Coach: Kim Giffin	University of Florida Robert Shevin and Larry Sands Coach: Douglas Ehninger
1955	University of Alabama Dennis Holt and Ellis Storey Coach: Annabel D. Hagood	Wilkes College Harold Flannery and James Neveras Coach: Arthur Kruger
1956	United State Military Academy George Walker and James Murphy Coach: Abbott Greenleaf	Saint Joseph's College John Gough and J. Foley Coach: Joseph Erhart, S.J.
1957	Augustana College Norman Lefstein and Phillip Hubbard Coach: Martin Holcomb	United States Military Academy James Murphy and George Walker Coach: Abbott Greenleaf
1958	Northwestern University William Welsh and Richard Kirshberg Coach: Russel R. Windes	Harvard University David Bynum and James Kincaid Coach: Robert O'Neill
1959	Northwestern University William Welsh and Richard Kirshberg Coach: Russell R. Windes	Wisconsin State University at Eau Claire James Shafer and Charles Bush Coach: Grace Walsh
1960	Dartmouth College Anthony Roisman and Saul Baernstein Coach: Herbert L. James	San Diego State College John Raser and Robert Arnhym Coach: John Ackley
1961	Harvard University Laurence Tribe and Gene Clements Coach: James Kincaid	King's College Frank Harrison and Peter Smith Coach: Robert Connelly
1962	Ohio State University Dale Williams and Sarah Benson Coach: Richard Rieke	Baylor University Calvin Kent and Michael Henke Coach: Glenn Capp

Tournament Results, 1947-1985

YEAR	CHAMPIONS	RUNNERS-UP
1963	Dartmouth College Frank Wohl and Stephen Kessler Coach: Herbert L. James	University of Minnesota Andre Zdrzil and David Krause Coaches: Robert L. Scott and Donn W. Parson
1964	University of the Pacific Raoul Kennedy and Douglas Pipes Coach: Paul Winters	Boston College James J. Unger and Joseph McLaughlin Coaches: John Lawton and Lee Huebner
1965	Carson-Newman College John Wittig and Barnett Pearce Coach: Forrest Conklin	Northeastern State College David Johnson and Glen Strickland Coach: Valgene Littlefield
1966	Northwestern University Bill Snyder and Mike Denger Coach: Thomas B. McClain	Wayne State University Douglas Frost and Kathleen McDonald Coach: George Ziegelmueller
1967	Dartmouth College Tom Brewer and John Isaacson Coach: Herbert L. James	Wayne State University Don Ritzenheim and Kathleen McDonald Coach: George Ziegelmueller
1968	Wichita State University Robert Shields and Lee Thompson Coach: Quincalee Striegel	Butler University Donald Kiefer and Carl Flaningam Coach: Nichols Cripe
1969	Harvard University Richard Lewis and Joel Perwin Coach: Laurence Tribe	University of Houston David Seikel and Michael Miller Coach: William B. English
1970	University of Kansas Robert McCulloh and David Jeans Coaches: Donn W. Parson and Jackson Harrell	Canisius College David Goss and David Wagner Coach: Bert Gross
1971	University of California, Los Angeles Don Hornstein and Barrett McInerney Coach: Patricia B. Long	Oberlin College Scott Lassar and Joe Misner Coach: Larry E. Larmer
1972	University of California, Santa Barbara Mike Clough and Mike Fernandez Coach: Kathy Corey	University of Southern California Ron Palmieri and Dennis Winston Coach: John C. DeBross
1973	Northwestern University Elliot Minberg and Ron Marmer Coach: David Zarefsky	Georgetown University Bradley Ziff and Stewart Jay Coach: James J. Unger
1974	Harvard University Greg A. Rosenbaum and Charles E. Garvin Coach: Mark Arnold	Augustana College Bob Feldhake and Rick Godfrey Coach: Dan Bozik
1975	Baylor University Jay Hurst and David Kent Coach: Lee Polk	University of Redlands Greg Ballard and Bill Smelko Coach: William Southworth
1976	University of Kansas Robin Rowland and Frank Cross Coaches: Donn W. Parson and Bill Bathrop	Georgetown University Charles Chafer and David Ottoson Coach: James J. Unger
1977	Georgetown University John Walker and David Ottoson Coach: James J. Unger	University of Southern California Leslie Sherman and Steven Combs Coaches: John C. DeBross and Lee Garrison
1978	Northwestern University Mark Cotham and Stuart Singer Coach: G. Thomas Goodnight	University of Southern California Steven Combs and Jon Cassanelli Coaches: John C. DeBross and Lee Garrison

Tournament Results, 1947-1985

YEAR	CHAMPIONS	RUNNERS-UP
1979	Harvard University Michael B. King and John M. Bredehoft Coaches: Charles E. Garvin and Greg A. Rosenbaum	Northwestern University Don Dripps and Mark Cotham Coach: G. Thomas Goodnight
1980	Northwestern University Don Dripps and Tom Fulkerson Coach: G. Thomas Goodnight	Harvard University John M. Bredehoft and William C. Foutz Coaches: Dallas Perkins and L. Jeffrey Pash
1981	University of Pittsburgh Michael Alberty and Stephen Marzen Coach: Thomas Kane	Dartmouth College Cy Smith and Mark Weinhardt Coaches: Herb James and Ken Strange
1982	University of Louisville Dave Sutherland and Dan Sutherland Coach: Tim Hynes	University of Redlands Bill Isaacson and Jeff Wagner Coach: William Southworth
1983	University of Kansas Mark Gidley and Rodger Payne Coach: Donn W. Parson	Dartmouth College Robin Jacobsohn and Tom Lyon Coaches: Herbert L. James, Ken Strange, and Steve Mancuso
1984	Dartmouth College Leonard Gail and Mark Koulogeorge Coaches: Herbert L. James, Ken Strange, and Tom Lyon	University of Louisville Cindy Leiferman and Mark Whitehead Coach: Tim Hynes
1985	Harvard University Jonathan Massey and Ed Swaine Coaches: Dallas Perkins and Jonathan Wiener	University of Iowa Robert Garman and Karla Leeper Coaches: Robert Kemp, Dale Herbeck, Greg Phelps, and John Katsulas



*Runners-Up, 1985 NDT
Karla Leeper and Robert Garman, University of Iowa hold Permanent Second Place Trophy*

Top Speakers, 1957-1985

1957

1st: Patricia Stallings, University of Houston
2nd: Phillip Hubbard, Augustana College (Ill.)

1958

1st: Michael Miller, University of Southern California
2nd: Phillip Hubard, Augustana College (Ill.)

1959

1st: James Ray, United States Military Academy
2nd: Ray Nichols, University of Kansas

1960

1st: Don Herrick, William Jewell College
2nd: George Schell, Baylor University

1961

1st: George Schell, Baylor University
2nd: Laurence Tribe, Harvard University

1962

Tie: Lee Huebner, Northwestern University
Tie: Harold Lawson, Kansas State Teachers College

1963

1st: Daniel Kolb, College of the Holy Cross
2nd: Robert Roberts, University of Alabama

1964

1st: Robert Roberts, University of Alabama
2nd: John Hempelmann, Georgetown University

1965

1st: Robert Shrum, Georgetown University
2nd: Douglas Pipes, University of the Pacific

1966

1st: William Snyder, Northwestern University
2nd: John Holcomb, Augustana College (Ill.)

1967

1st: Rick Flam, University of Southern California
2nd: Thomas Brewer, Dartmouth College

1968

1st: David Zarefsky, Northwestern University
2nd: Richard Brautigam, Michigan State University

1969

1st: David Seikel, University of Houston
2nd: Joel Perwin, Harvard University

1970

1st: Mike Miller, University of Houston
2nd: Jim Caforio, Loyola University (Los Angeles) and
David Goss, Canisius College

1971

1st: Joe Loveland, University of North Carolina
2nd: Joseph Angland, Massachusetts Institute of
Technology

1972

1st: Terry McKnight, Canisius College
2nd: Ron Palmieri, University of Southern California

1973

1st: Elliot Mincberg, Northwestern University
2nd: Frank Kimball, University of California at Los Angeles

1974

1st: Michael Higelin, University of Southern California
2nd: Marvin Isgur, University of Houston

1975

1st: Thomas Rollins, Georgetown University
2nd: Robert Feldhake, Augustana College (Ill.)

1976

1st: Robert Feldhake, Augustana College (Ill.)
2nd: Thomas Rollins, Georgetown University

1977

1st: Gilbert Skillman, University of Kentucky
2nd: John Walker, Georgetown University

1978

1st: Thomas Rollins, Georgetown University
2nd: Stuart Singer, Northwestern University

1979

1st: Mark Fabiani, University of Redlands
2nd: Michael B. King, Harvard University



*1985 Top Speaker
Vernon McGuire Presents District IX Trophy to Danny
Povinelli, University of Massachusetts*

40th NATIONAL TOURNAMENT – APRIL 3 to APRIL 7, 1986 DARTMOUTH COLLEGE, HANOVER, NEW HAMPSHIRE

1980

1st: **Stephen Meagher**, Dartmouth College
2nd: **Don Dripps**, Northwestern University

1981

1st: **Jeff Jones**, University of Kentucky
2nd: **Paul Weathington**, West Georgia College and
Scott Harris, Wayne State University

1982

1st: **Steve Mancuso**, University of Kentucky
2nd: **John Barrett**, Georgetown University

1983

1st: **John Barrett**, Georgetown University
2nd: **Leonard Gail**, Dartmouth College

1984

1st: **Leonard Gail**, Dartmouth College
2nd: **Bill Brewster**, Emory University

1985

1st: **Danny Povinelli**, University of Massachusetts
2nd: **Doug Sigel**, Northwestern University

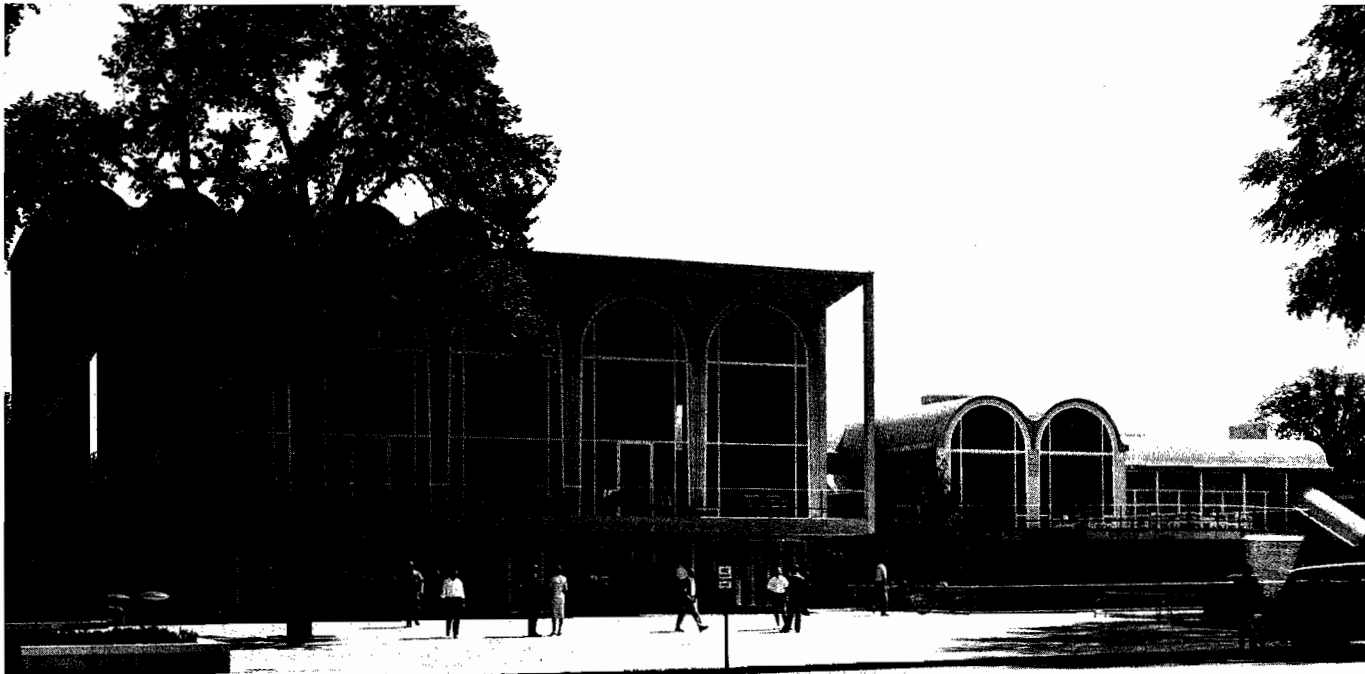
1986

1st: **Lynn Robbins**, Baylor U.
2nd: **Scott Sigel**, Emory U.

Acknowledgments

Officials of the National Debate Tournament and the members of the American Forensic Association are grateful to the Ford Motor Company Fund for the generous grant which helped to make this tournament possible. This support is recognized in the Ford Motor Fund Awards for the final round participants. We are also indebted to Mr. Sigurd S. Larmon, Dartmouth '14, for donating the rotating Larmon Trophy, emblematic of the national debate championship; to Mr. and Mrs. George Walker for donating the rotating second-place Walker Memorial Trophy; to Mr. Robert Feldhake, top speaker in the 1976 NDT and now an attorney in Los Angeles, for donating the Top Speaker watch; and to District IX for donating the rotating Top Speaker trophy.

We are most grateful to Dartmouth College and the forensics directors of District VIII for their hosting of this tournament. Special thanks are due to Herbert L. James, our tournament host. Particular recognition should go to the members and alumni of the Dartmouth Forensic Union for their assistance and to the Lexington High School debate squad for their service as timekeepers. Also instrumental to successful hosting of the 1986 NDT was the support of John D. Bryant, Executive Officer of Dartmouth College, Orton H. Hicks, Vice President Emeritus of Dartmouth College, Jay S. Larmon of Oosterville, Massachusetts, and Mrs. X.N. Benziger of South Norwalk, Connecticut.



Hopkins Center, the performing arts center at Dartmouth College

Tournament Facts, 1967-1985

1967
Site: University of Chicago
Host: Richard L. LaVarnway and Thomas B. McClain
Director: Stanley G. Rives

1968
Site: Brooklyn College
Host: Charles E. Parkhurst
Director: Richard D. Rieke

1969
Site: Northern Illinois University
Host: M. Jack Parker
Director: Roger Hufford

1970
Site: University of Houston
Host: William B. English
Director: David Matheny

1971
Site: Macalester College
Host: W. Scott Nobles
Director: John C. Lehman

1972
Site: University of Utah
Host: Jack Rhodes
Director: John C. Lehman

1973
Site: U.S. Naval Academy
Host: Philip Warken
Director: Merwyn A. Hayes

1974
Site: U.S. Air Force Academy
Host: David Whitlock
Director: Merwyn A. Hayes

1975
Site: University of the Pacific
Host: Paul Winters
Director: Michael David Hazen

1976
Site: Boston College
Host: Daniel M. Rohrer
Director: Michael David Hazen

1977
Site: Southwest Missouri State University
Host: Rita Rice Flaningam
Director: Michael David Hazen

1978
Site: Metropolitan State College, Denver
Host: Gary Holbrook
Director: Michael David Hazen

1979
Site: University of Kentucky
Host: J.W. Patterson
Director: Michael David Hazen

1980
Site: University of Arizona
Host: Tim A. Browning
Director: Michael David Hazen

1981
Site: California Polytechnic State University, Pomona
Host: Robert Charles
Director: Michael David Hazen

1982
Site: Florida State University
Host: Marilyn J. Young
Director: Michael David Hazen

1983
Site: Colorado College
Host: James A. Johnson
Director: Michael David Hazen

1984
Site: University of Tennessee
Host: Russell Taylor Church
Director: David Zarefsky

1985
Site: Gonzaga University
Host: Darrell Scott and Joan Archer-Cronin
Director: David Zarefsky



Tournament Staff, 1985

NDT Participants: 1947-1986

- Abilene Christian College:** 55,56,57,58,61,65,69,70
University of Alabama: 48,49,50,53,54,55,56,60,61,63,64,66,71,73,75,76,77,78,79
Albion College: 67,69
American University: 61
University of Arizona: 49,50,69,76,77,78,79,80,81,82,83,84,85
Arizona State University: 47, 67
University of Arkansas: 50
Auburn University: 85,86
Augustana College (Illinois): 47,48,49,50,51,52,53,54,55,56,57,58,59,60,64,66,67,68,70,71,73,74,75,76,77,78,79,80,81
Augustana College (South Dakota): 76,77,78,79,80,81,82,83,84,85
Bates College: 48,76,77,78,79,80,81,82,83,84,85,86
Baylor University: 48,49,50,51,52,53,55,56,60,61,62,64,67,69,71,74,75,76,77,78,79,81,82,83,84,85,86
Boston College: 62,63,64,65,67,68,69,70,71,72,74,75,79
Boston University: 60,73,74,75
Bowling Green State University: 50,51,70,75,76,78
Bradley University: 51,69,79
Brandeis University: 65,67
Brigham Young University: 55,56,60,62,63,66,78
Brooklyn College: 61
Brown University: 69,70,72
Butler University: 59,61,67,68,80,81,83
University of California at Berkeley: 68,77,81
University of California at Los Angeles: 48,54,66,68,69,70,71,72,73,74,75,76,78
University of California at Santa Barbara: 64,71,72,73,75
California State University, Fullerton: 70,71,72,73,75,76,77,78,80,83,85,86
California State University, Los Angeles: 55,56,61,66,73,76
California State University, Northridge: 65,67,68,72,74
California State University, Sacramento: 74,75,76,77,78,79,81,82
California State University, San Diego: 49,52,53,54,55,56,57,58,59,60,61,62,63,72
Canisius College: 69,70,71,72,73,74,77,78,79
Capital University: 48,73,74
Carson-Newman College: 64,65,66
Case Institute of Technology: 73
Catholic University: 73,74,75,76,77,78
University of Central Florida (Florida Tech): 76,78,79,80,81,83
Central Michigan University: 74,76,83,85,86
Central Oklahoma State University: 52,53,54,56,61,63,72,73,85,86
Champlain College: 49
University of Chicago: 48,49
Claremont McKenna (Men's) College: 78,79,80,81,82,83,84,85
Coe College: 48
Colgate University: 51
Colorado College: 75,77,79
University of Colorado: 47,48
Concordia College: 68,68,73
Cornell University: 76
Dartmouth College: 48,51,54,55,56,57,58,59,60,61,63,64,65,66,67,68,69,70,71,72,73,75,76,77,78,79,80,81,82,83,84,85,86
David Lipscomb College: 55
University of Denver: 54,67,68,69,70,85
DePaul University: 48,49,51,57
University of Detroit: 67
Drury College: 72,80
Duke University: 56,57,58,61
Eastern Illinois University: 71,74,75,76,77,78,79,80,81,82,83,84,85,86
Eastern Nazarene College: 58,60,61
Emory University: 65,66,67,68,69,70,71,72,77,78,81,82,83,84,85,86
Emporia State University: 51,53,58,59,60,61,63,65,66,69,70,73,74,76,77,80,81,82
Fairmont State College: 76,78
University of Florida: 48,50,51,52,53,54,55,56,57,59,62,68,69,70
Florida State University: 75
Fordham University: 57,59,66
Fordham University School of Education: 58,59,61
Fort Hays State College: 61
George Mason University: 74,75,80,84,85,86
George Pepperdine College: 49,50,51,52,53
George Washington University: 49,51,52,54,58,59,60,62,63,64,65,66,68,69,70,71,72,73,76,81,82,83
Georgetown College: 49
Georgetown University: 49,52,56,61,62,63,64,65,66,67,70,71,72,73,74,75,76,77,78,79,80,81,82,83,84,85,86
University of Georgia: 67,68,69,70,71,72,73,74,75,76,77
Georgia State University: 84,85,86
Gonzaga University: 47,48,59,60,62,72,73,75,76,77,79,80,81,82,85,86
Greenville College: 56
Harvard University: 50,54,55,56,57,58,59,60,61,62,63,64,65,66,67,68,69,70,71,72,73,74,75,76,77,78,79,80,81,82,83,84,85,86
Hiram College: 52
College of the Holy Cross: 48,51,52,53,54,62,63
University of Houston: 51,53,55,56,57,58,59,67,68,69,70,71,72,73,74,75,76,77,78,82,83
Howard University: 52,54
University of Idaho: 53,57,61
Idaho State University: 53,57,61
University of Illinois, Chicago Circle: 52,53,54,56,58,64,65
Illinois College: 54
Illinois State University: 52,54,55,62,63,72,73,81
Indiana State University: 47,73
University of Iowa: 72,73,75,77,78,80,81,83,84,85,86
Iowa State University: 52,71,74,82,83,84
James Madison University: 79,80,81,82,83,84,86
John Carroll University: 78,80,81
Johns Hopkins University: 77,78,79
University of Kansas: 48,49,50,51,52,53,54,55,56,57,58,59,60,63,64,66,68,69,70,71,72,73,74,75,76,77,78,79,80,81,82,83,84,85,86
Kansas State College of Pittsburg: 61,63,67
Kansas State University: 55,64,75,76,77,83
University of Kentucky: 60,64,67,68,73,74,75,76,77,78,79,80,81,82,84,85,86
Kent State University: 51
King's College: 59,60,61,63,67,68,77,83
Lewis and Clark College: 64,66,67,71,75,76,77,78,80
Louisiana College: 47,48,49,53,54
University of Louisville: 79,80,81,82,83,84,85,86
Loyola-Marymount University: 62,63,64,65,67,68,69,70,71,72,73,74,76,77,78,80,81,82,83,84,85,86
Loyola University (Chicago): 60,70,72
Luther College: 50
Macalaster College: 56,61,71,73,74,75,76,77,78,79,80,81,82,84,85,86
Marietta College: 59
Marquette University: 58,69
University of Maryland: 67
University of Massachusetts: 73,74,75,76,77,78,79,80,81,82,83,84,85,86
Massachusetts Institute of Technology: 48,49,56,57,58,62,63,64,66,68,69,71,73,74,75,76,79
Mercer University: 78,79,80,81,92,83,84
University of Miami (Florida): 52,53,54,55,57,58,59,60,61,62,63,66,68,69,74
Miami University (Ohio): 76,80,81
University of Michigan: 71,72,76,77
Michigan State University: 53,66,68,69
Middlebury College: 55
Middle Tennessee State University: 70,72,77
Midland College: 53
Midwestern College: 69
University of Minnesota: 62,63,64,65,66,67,73,82,83
University of Mississippi: 47,51,52
University of Missouri, Columbia: 68,71,72
University of Missouri, Kansas City: 61,62,66,68
University of Montana: 49,50,51
Montana State University: 51,60
Morehead State University: 77,78,79,80
Mount Mercy College: 53

Nebraska State College at Kearney: 65,66
 Nebraska Wesleyan University: 51,52,54,55
 University of Nebraska, Lincoln: 80,83,86
 University of Nebraska, Omaha: 77
 University of Nevada: 48
 University of New Hampshire: 71
 University of New Mexico: 51,52,54,85
 State University of New York, College at Geneseo: 53
 Northeastern Oklahoma State University: 62,63,64,65,66,67,68,69,
 70,72,73,81,82,84,85
 Northern Illinois University: 65
 University of Northern Michigan: 75
 North Texas State University: 48,49,59,62,63,64,65,66,79,83,84,
 85,86
 Northwest Missouri State University: 79,80,82
 Northwestern College (Minnesota): 63
 Northwestern University: 47,49,50,54,55,58,59,60,62,65,66,67,68,
 69,70,71,72,73,74,75,76,77,78,79,80,82,83,84,85,86
 University of North Carolina: 71,72,73,74,75,77,80,81,82,83,84,85,86
 University of North Dakota: 79
 University of Northern Colorado: 71,74,75
 University of Northern Iowa: 74,75,81,82,83,84,85,86
 University of Notre Dame: 47,48,49,50,51,52,53,55,56,57,58,65,78
 Oberlin College: 68,69,70,71,72
 Occidental College: 53
 Odessa College: 81,82,86
 Ohio University: 70,71,72,74,75,77,79,82
 Ohio State University: 47,52,60,61,62,63,67,68,69,70,71,86
 University of Oklahoma: 57,58,59,60,61,63,64
 Oklahoma Baptist University: 77
 Oklahoma City University: 65
 Oklahoma State University: 68,69,70
 University of Oregon: 60,61,62,63,64,65,66,67,68,69,73,75,82,84
 Oregon State University: 47,48,54,63,64
 Ottawa University: 49
 Pace University: 75,81,83,84
 University of the Pacific: 58,61,64,65,68,69,71,72,76
 Pacific Lutheran University: 52,56,62,72,82,83,84
 Pacific University: 49,55,56,57,65,73
 University of Pennsylvania: 49,50,51,74,57,58,59,60,65,66
 Pennsylvania State University: 47,50,52,55
 Phillips University: 49
 University of Pittsburgh: 53,56,60,62,64,66,67,70,71,72,73,74,75,76,
 79,80,81,82,83,85,86
 Princeton University: 51,53,56,57,59,61
 University of Puget Sound: 56,57
 Purdue University: 47,48,50,60,61,62
 University of Redlands: 50,51,52,57,58,59,62,64,65,69,72,73,74,75,
 76,77,79,80,81,82,83,84,85,86
 University of Rhode Island: 73
 Rice University: 57
 University of Richmond: 56,62,65,76
 Roanoke College: 50
 Rockhurst College: 62,64
 Rutgers University: 47,68,71,73,74
 Saint Anselm's College: 56,59,64,68,69,71,72
 Saint John's University: 53,54,62,63,64
 Saint Joseph's College: 55,56,57,59,67
 Saint Martin's College: 51,53,59
 Saint Mary's College: 49
 Saint Olaf College: 48,49,51,52,53,57,62,63
 Saint Peter's College: 51,53,55,57,59,62
 College of Saint Thomas: 47
 Samford University: 73,74,75,78,79,80,81,82,83,84,85,86
 University of San Francisco: 58
 San Jacinto College: 86
 San Joaquin Delta College: 80,81
 University of Scranton: 61
 Seton Hall University: 60,72,73,79,83,85
 Smith College: 52
 University of South Carolina: 50,51,54,56,57,58,59,60,61,62,63,64,
 66,67,68
 University of South Dakota: 67,68,75
 South Dakota State College: 54
 Southeast Oklahoma State University: 47,48,49,50,59,73,74,76

University of Southern California: 47,48,50,51,52,54,57,58,59,60,
 61,63,64,65,66,67,68,69,70,71,72,73,74,75,76,77,78,79,80,81,82,83,
 84,85,86
 Southern Illinois University: 57,58,60,62,63,70
 Southern Methodist University: 50,52
 University of Southern Mississippi: 65,66
 Southern Oregon College: 67
 Southern Utah State College: 82,83,84,85
 Southwest Missouri State University: 52,55,57,59,60,62,63,65,69,
 70,71,72,73,74,75,77,78
 Southwestern College: 56,57,78,79,80,81
 University of Southwestern Louisiana: 76,77,78,79
 Stanford University: 49
 Stevens Institute of Technology: 49
 Stonehill College: 67,68
 Suffolk University: 81,82,83,84
 Swarthmore College: 48
 Temple University: 49
 University of Tennessee: 50,51,79
 Tennessee Polytechnic Institute: 62
 University of Texas, Arlington: 77,78,80,82
 University of Texas, Austin: 47,60,71,72,84,86
 Texas A & M University: 81,82,84,85
 Texas Christian University: 47,48,51,60,62,66,67,75,76
 Texas Technological College: 68,70,73
 University of the South: 49
 University of Toledo: 71,72
 Union College and University: 55
 United States Air Force Academy: 59,60,76,77,78,79
 United States Merchant Marine Academy: 52,53,59
 United States Military Academy: 47,48,49,50,51,52,53,54,55,56,57,
 58,59,60,61,62,63,64,65,66,77,80
 United States Naval Academy: 47,48,49,50,58,64,65,70,72,78,80,85
 University of Utah: 47,48,50,51,52,72,73,75,76,77,78,79,80,81,82,83,
 84,85,86
 Utica College: 50,51
 Vanderbilt University: 76,77,78,80
 University of Vermont: 47,48,50,51,53,54,55,56,57,60,61,62,64,65,
 66,84,85,86
 University of Virginia: 47,63,67,68,81
 Wabash College: 55
 Wake Forest University: 47,48,50,51,52,53,54,55,56,59,63,64,70,71,
 73,74,75,76,77,78,80,81,82,83,84,86,87,88,89,90,91,92,93
 Washburn University: 56,58,64,65,66,72,86
 Washington and Lee University: 63,68,69
 University of Washington: 55,68
 Washington State University: 47,50,54,58,66,69,70,76
 Wayne State University: 58,61,63,64,65,66,67,68,69,71,72,73,77,78,
 79,80,81,82,83,84,85,86
 Weber State University: 81,86
 Wesleyan University: 50,52
 West Georgia College: 73,74,75,76,77,78,79,80,81,82,83,84,85,86
 West Virginia University: 55,64,74,79,81,85,86
 West Virginia Wesleyan College: 75,77
 Western Illinois University: 71,73,80,82,85
 Western Michigan University: 63,64
 Western Reserve University: 66
 Western Washington University: 74,78,80,81,83,85,86
 Wheaton College: 47,59,63
 Whitman College: 50,51,52,53,54,55,58,59
 Whittier College: 71
 Wichita State University: 48,64,67,68,77,79
 William Jewell College: 60,61
 College of William and Mary: 56,68,69,73,74,84
 University of Wisconsin at Eau Claire: 50,51,53,54,55,56,57,58,59,
 73,76,78,79
 Wilkes College: 54,55,57,58
 Willamette University: 48,49,51,52,55,58,59,61
 College of Wooster: 73,79,81,83
 University of Wyoming: 67,68,70,71,72,73,74,75,76,77,78,81,82,83,
 84,86
 Xavier University: 50,53,54,55,56,57,58,59
 Yale University: 47,49